

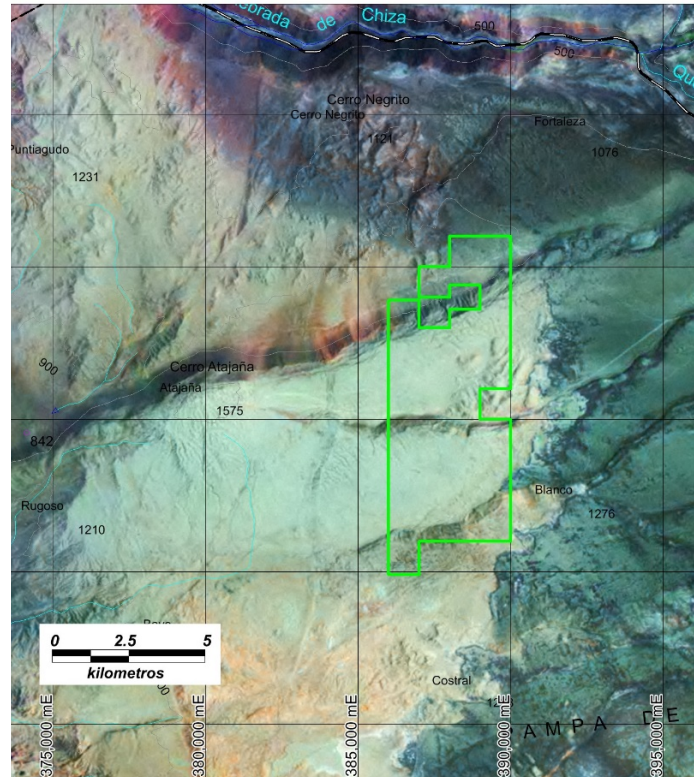
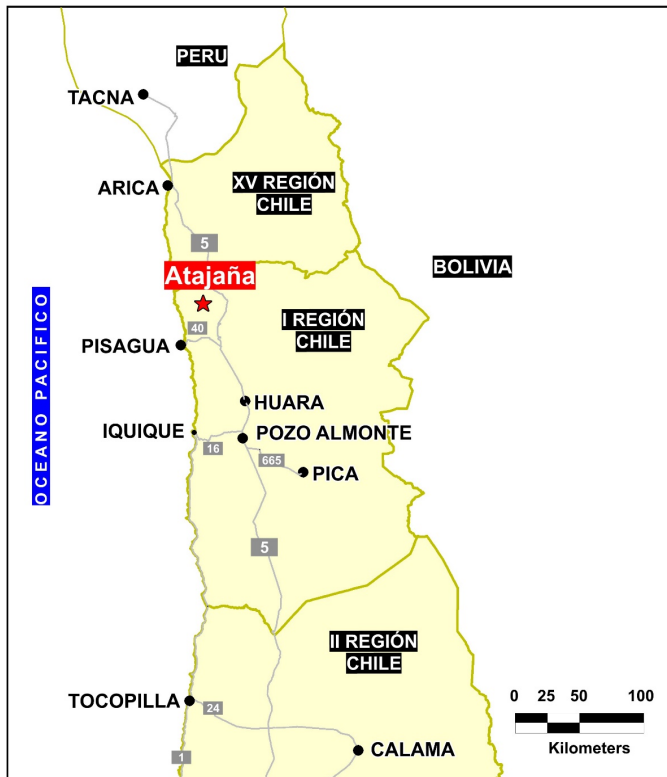


Solutions
for human
progress

Atajaña
Generative Exploration
Prospect #1

SUMMARY

Potencial stratabound deposit, anomalous surface samples
Historical workings include exotic samples and salt crust drillholes



HIGHLIGHTS

Central Northing (UTM):	7864900
Central Easting (UTM):	387800
Elevation (masl):	<1000
Metal(s):	Cu
Deposit Style:	Stratabound
Exploration Stage	Generative Exploration
Area (hectares)	3520
Nearest Project:	Retamilla (Porphyry Cu)
Historical:	40 salt crust drillholes

EXPLORATION WORK

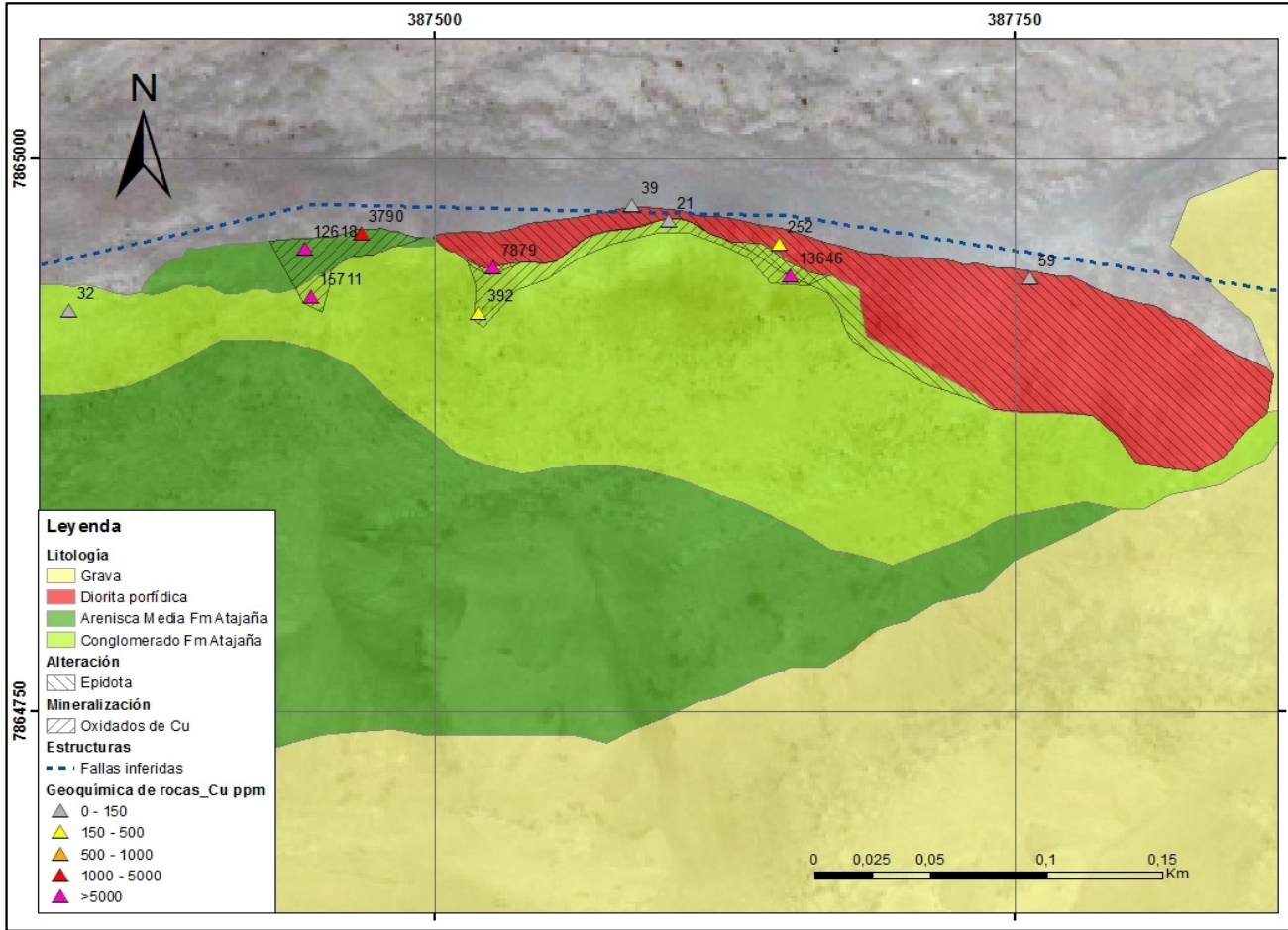
Geological Mapping:	1:5000
Geochemical Samples:	29
Trenching	N/A
Channel Samples	N/A
Geophysics:	N/A
RC Drill holes	N/A
DDH Drill holes:	N/A
Total drilling :	N/A
Other:	N/A





Solutions
for human
progress

Atajaña
Generative Exploration
Prospect #1



Location of the concession block in reference to the existing current and historical workings

CONTACT DETAILS

Jose Dias Cifuentes
New Metal Business Director
jose.dias.cifuentes@sqm.com
+56 9 7465 7359

Ricardo Gonzalez Montecinos
Metal Business and Exploration Manager
ricardo.gonzalez.montecinos@sqm.com
+56 9 6320 7257

www.sqm.com

