



Solutions  
for human  
progress

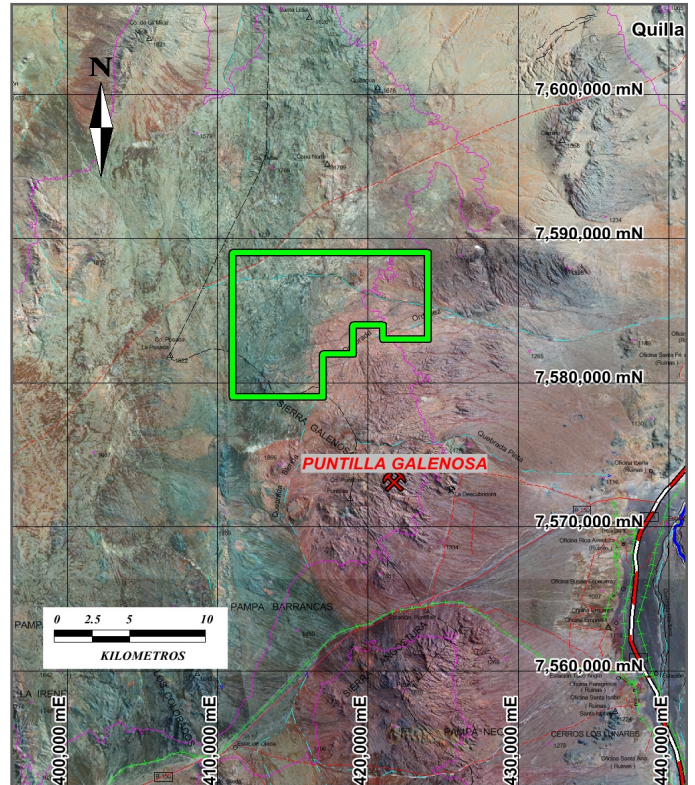
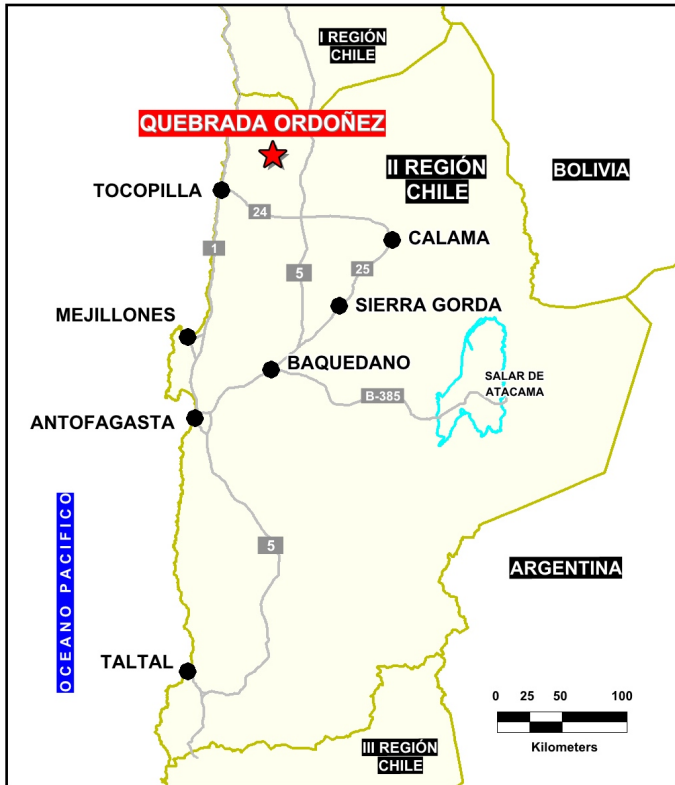
# Quebrada Ordóñez

Advanced Exploration

Prospect #19

## SUMMARY

RC grid drilling to top of bedrock defines an alteration zone 1.0km X 0.5km anomalous in As, Cu, and Zn. Various 2m to 4m intercepts between 1%Cu and 2%Cu between 150m to 250m downhole.



## HIGHLIGHTS

Central Northing (UTM):	7584500
Central Easting (UTM):	417000
Elevation (masl):	1600
Metal(s):	Cu
Deposit Style:	Porphyry
Exploration Stage	Advanced Exploration
Area (hectares)	10235
Nearest Project:	Tovaku (Pucobre Codelco)
Historical:	-

## EXPLORATION WORK

Geological Mapping:	1:20000
Geochemical Samples:	94
Trenching	13
Channel Samples	N/A
Geophysics:	N/A
RC Drill holes	4 (1430 m)
DDH Drill holes:	N/A
Total drilling :	4 (1430 m)
Other:	Petrography, 180 geochemical drills (6766 m)



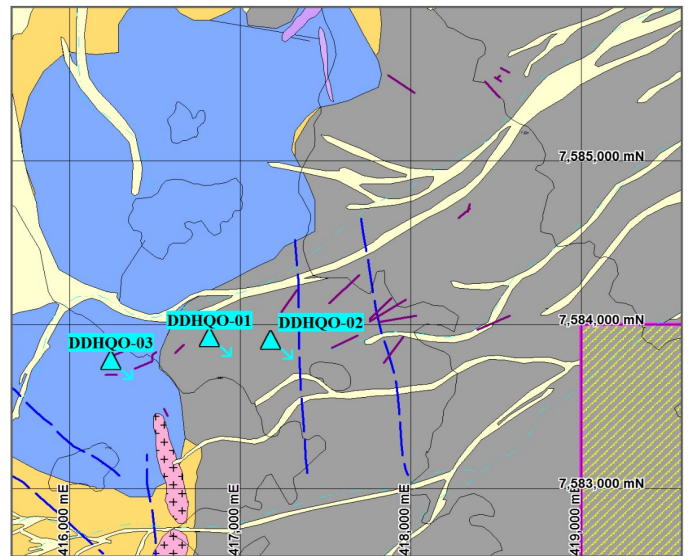
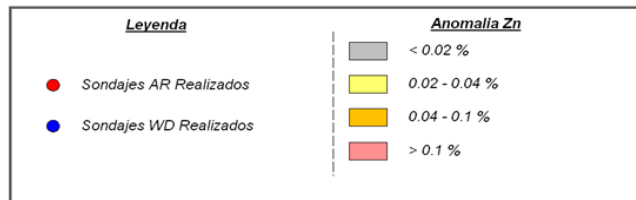
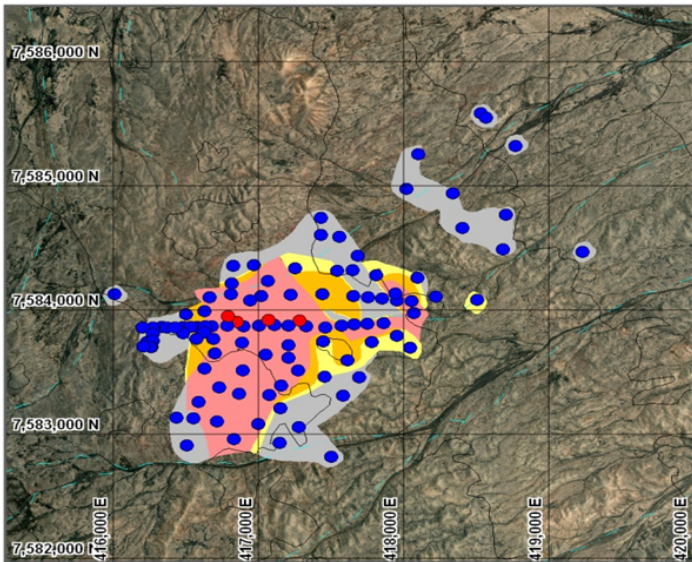


Solutions  
for human  
progress

# Quebrada Ordóñez

Advanced Exploration

Prospect #19



## CONTACT DETAILS

Jose Dias Cifuentes  
New Metal Business Director  
jose.dias.cifuentes@sqm.com  
+56 9 7465 7359

Ricardo Gonzalez Montecinos  
Metal Business and Exploration Manager  
ricardo.gonzalez.montecinos@sqm.com  
+56 9 6320 7257

[www.sqm.com](http://www.sqm.com)

