



Solutions  
for human  
progress

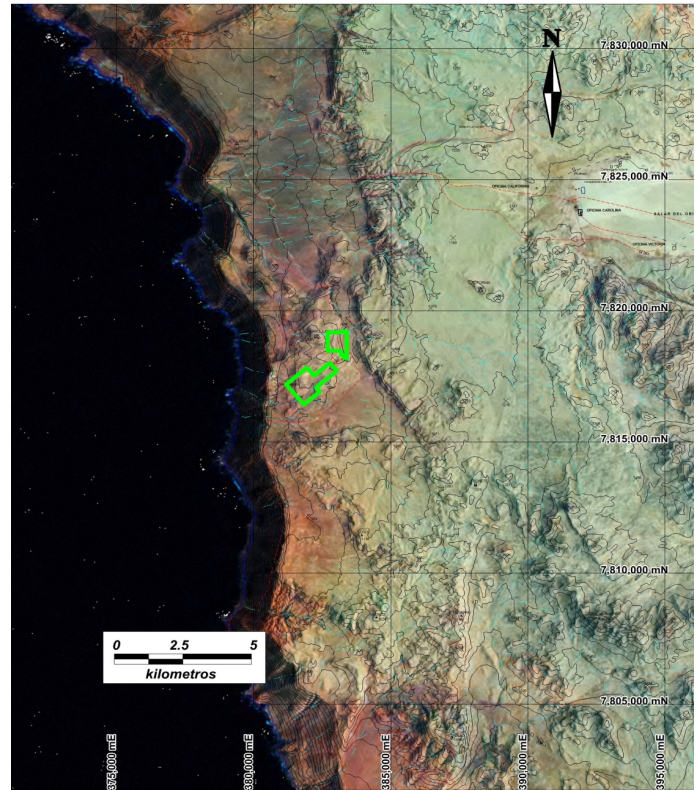
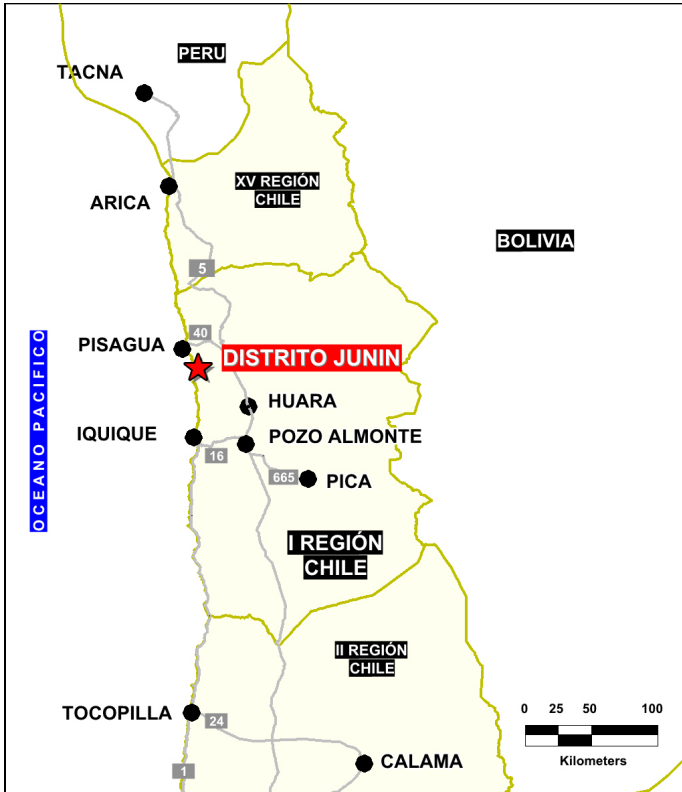
# Distrito Junin

Generative Exploration

Prospect #2

## SUMMARY

Concession block central to a 1.5km by 1.5km vein under explored vein district adjacent to several old workings. Historical workings include Puerto (320 t @ 16 g/t Au), Oportuna (+100kt @ +5g/t Au), Golondrina, La Guanaca, Vampiro, San Lorenzo Mine and Carmen Mine.



## HIGHLIGHTS

Central Northing (UTM):	7818450
Central Easting (UTM):	382800
Elevation (masl):	1000
Metal(s):	Au
Deposit Style:	Vein array
Exploration Stage	Generative Exploration
Area (hectares)	179
Nearest Project:	Camarones (Japanese group)
Historical:	Surface vein systems

## EXPLORATION WORK

Geological Mapping:	N/A
Geochemical Samples:	N/A
Trenching	N/A
Channel Samples	N/A
Geophysics:	N/A
RC Drill holes	N/A
DDH Drill holes:	N/A
Total drilling :	N/A
Other:	N/A



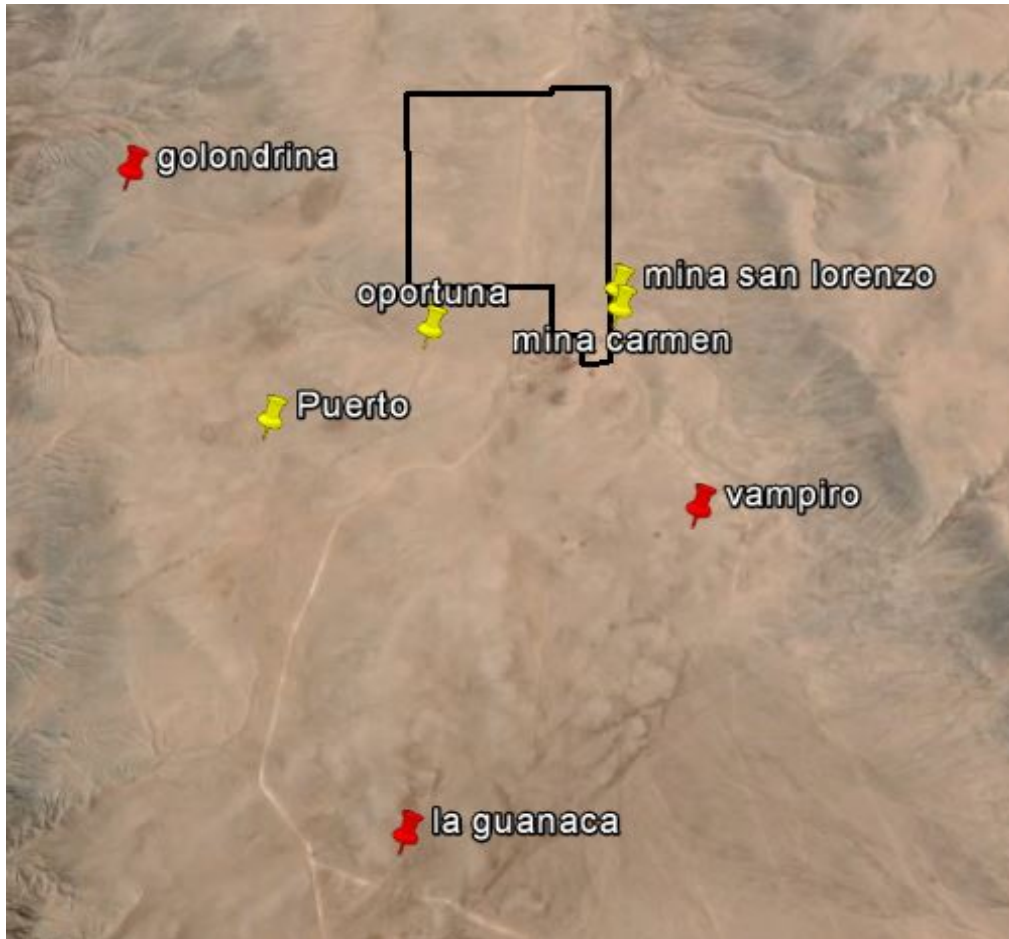


Solutions  
for human  
progress

# Distrito Junin

Generative Exploration

Prospect #2



Location of the concession block in reference to the existing historical workings

## CONTACT DETAILS

**Jose Dias Cifuentes**  
New Metal Business Director  
jose.dias.cifuentes@sqm.com  
+56 9 7465 7359

**Ricardo Gonzalez Montecinos**  
Metal Business and Exploration Manager  
ricardo.gonzalez.montecinos@sqm.com  
+56 9 6320 7257

[www.sqm.com](http://www.sqm.com)

