

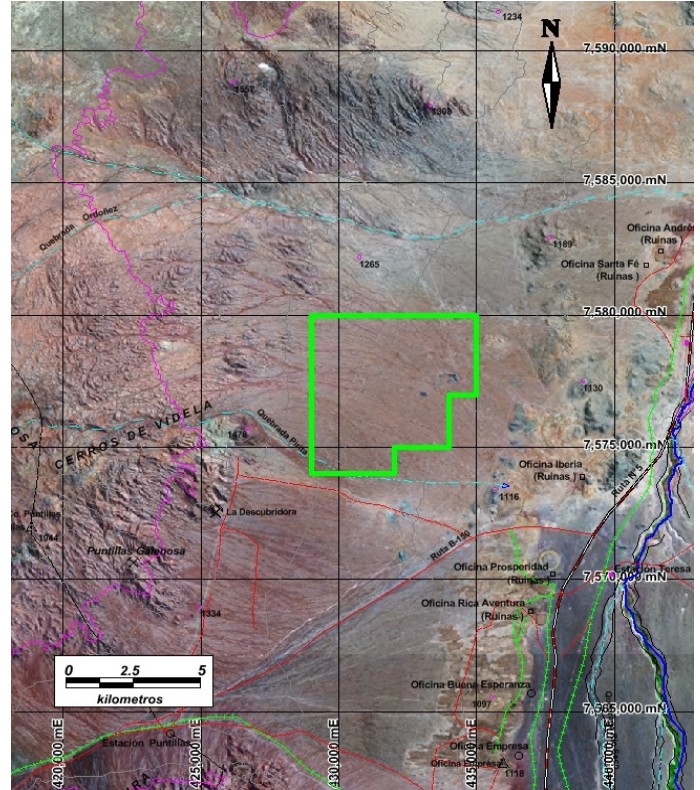
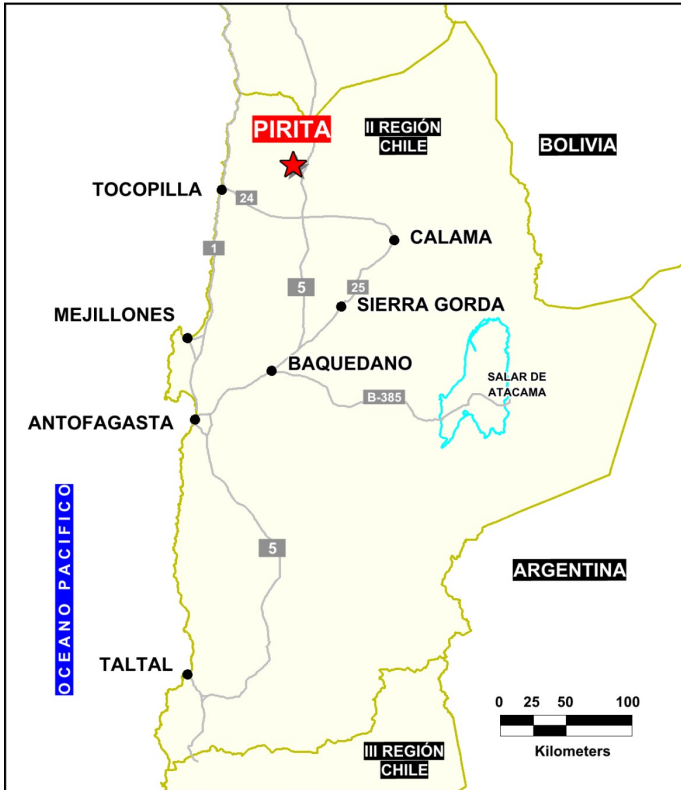


**Solutions  
for human  
progress**

**Pirita**  
Basic Exploration  
Prospect #20

## SUMMARY

Sector has potential for exotic oxide deposit associated with copper leaching from the Tovaku deposit approximately 2 kilometers to the west.  
Limited drilling indicated copper oxide mineralization near the base of gravel cover and in fractured top of bedrock



## HIGHLIGHTS

|                         |                           |
|-------------------------|---------------------------|
| Central Northing (UTM): | 7577000                   |
| Central Easting (UTM):  | 431700                    |
| Elevation (masl):       | 1200                      |
| Metal(s):               | Cu                        |
| Deposit Style:          | porphyry                  |
| Exploration Stage       | Basic Exploration         |
| Area (hectares)         | 4503                      |
| Nearest Project:        | Tovaku (Pucobre Codelco)  |
| Historical:             | 299 salt crust drillholes |

## EXPLORATION WORK

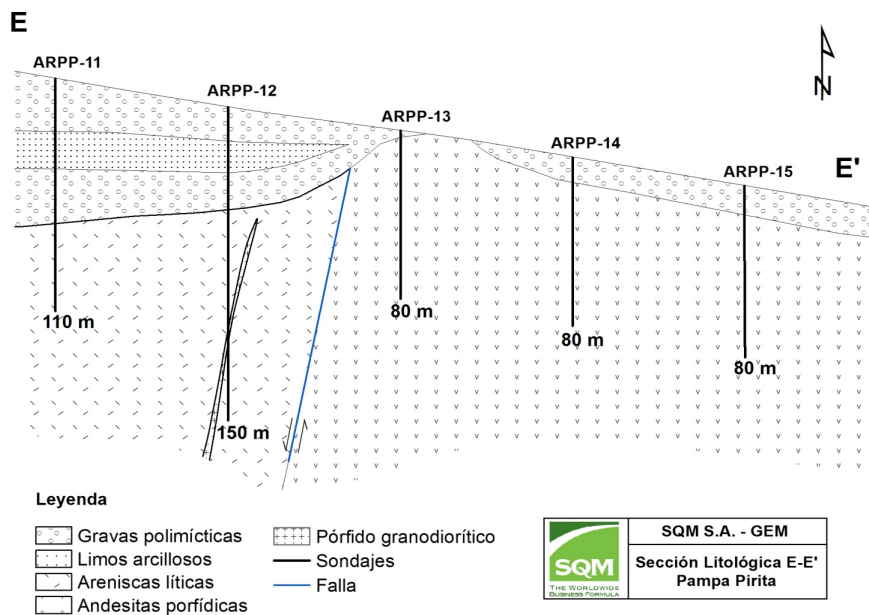
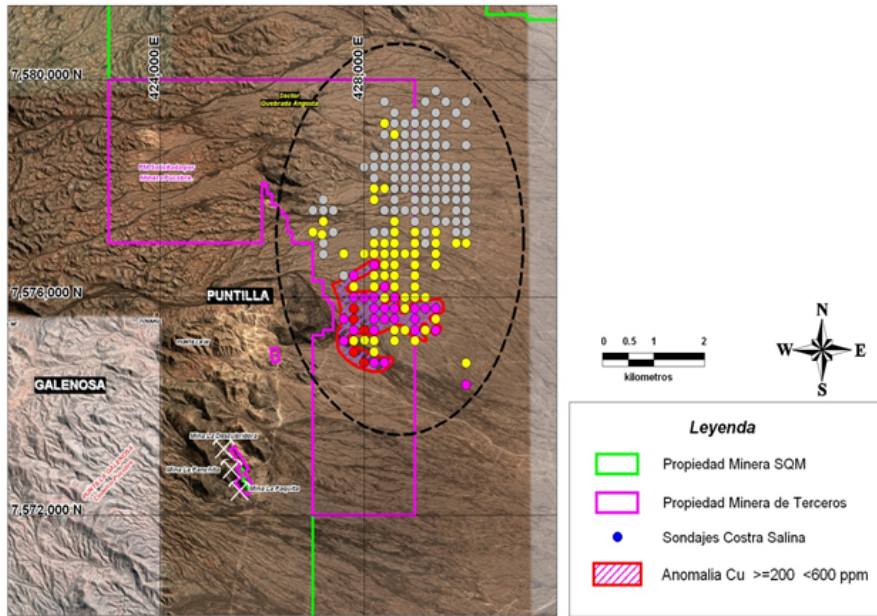
|                      |             |
|----------------------|-------------|
| Geological Mapping:  | 1:50000     |
| Geochemical Samples: | 132         |
| Trenching            | N/A         |
| Channel Samples      | N/A         |
| Geophysics:          | N/A         |
| RC Drill holes       | 20(2232 m)  |
| DDH Drill holes:     | N/A         |
| Total drilling :     | 20 (2232 m) |
| Other:               | -           |





Solutions  
for human  
progress

**Pirita**  
Basic Exploration  
Prospect #20



**CONTACT  
DETAILS**

Jose Dias Cifuentes  
New Metal Business Director  
jose.dias.cifuentes@sqm.com  
+56 9 7465 7359

Ricardo Gonzalez Montecinos  
Metal Business and Exploration Manager  
ricardo.gonzalez.montecinos@sqm.com  
+56 9 6320 7257

[www.sqm.com](http://www.sqm.com)

