



Solutions
for human
progress

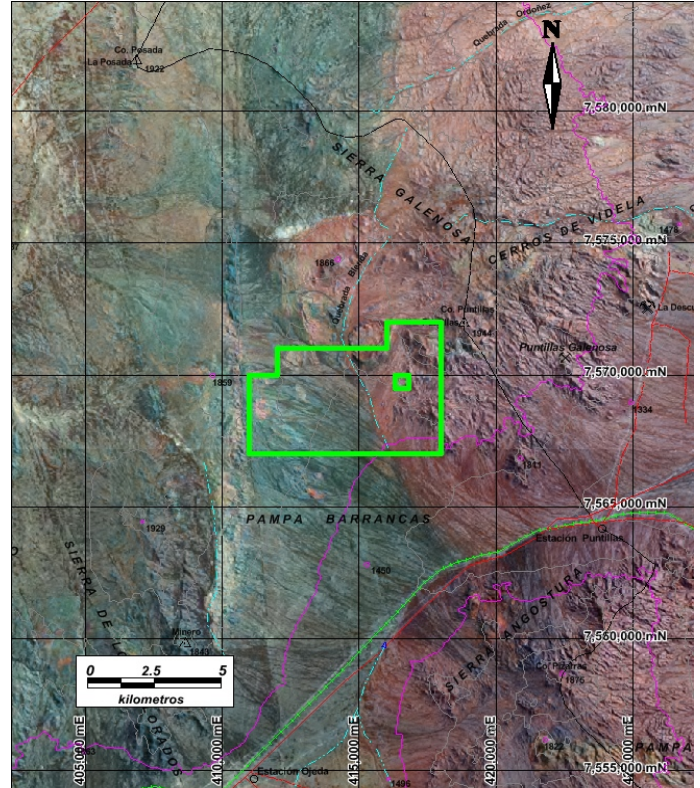
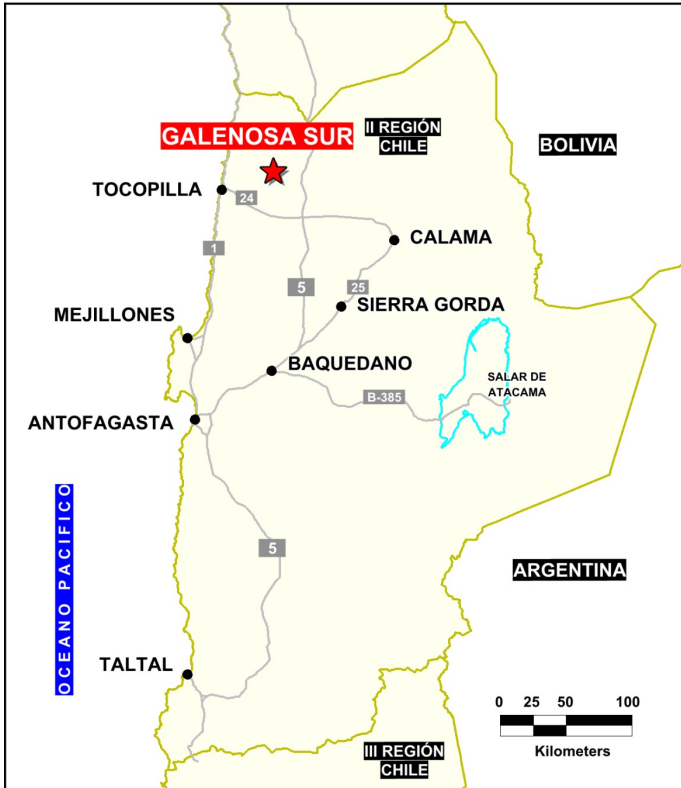
Galenosa Sur

Basic Exploration

Prospect #22

SUMMARY

Stockwork and mineralized (0.7% Cu, 109ppm Mo) dacitic porphyry intruding Paleozoic meta-sedimentary units (Fm. El Toco) and unmineralized Cretaceous granodiorite.



HIGHLIGHTS

Central Northing (UTM):	7569900
Central Easting (UTM):	414800
Elevation (masl):	1600
Metal(s):	Cu, Mo
Deposit Style:	Porphyry
Exploration Stage	Basic Exploration
Area (hectares)	4475
Nearest Project:	Tovaku (Pucobre Codelco)
Historical:	3 drillholes made by unknown

EXPLORATION WORK

Geological Mapping:	1:5000
Geochemical Samples:	158
Trenching	N/A
Channel Samples	N/A
Geophysics:	N/A
RC Drill holes	N/A
DDH Drill holes:	2 (591 m)
Total drilling :	2 (591 m)
Other:	-



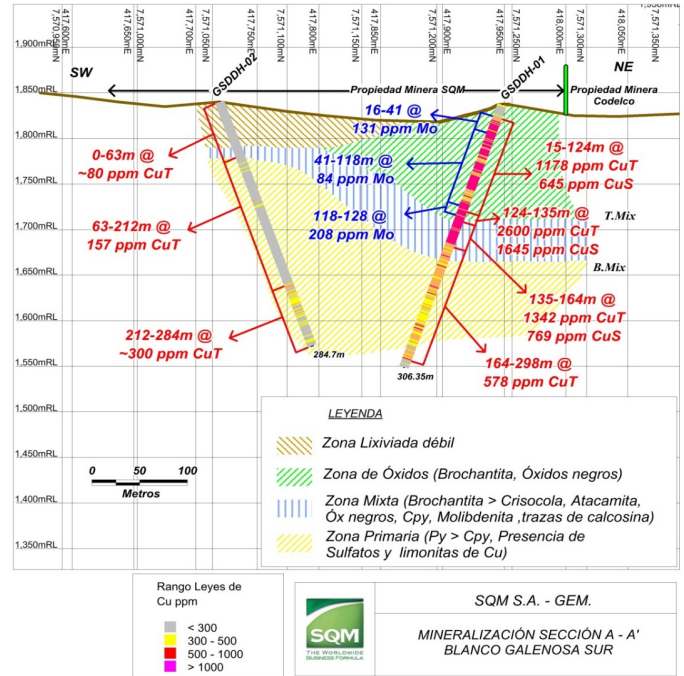
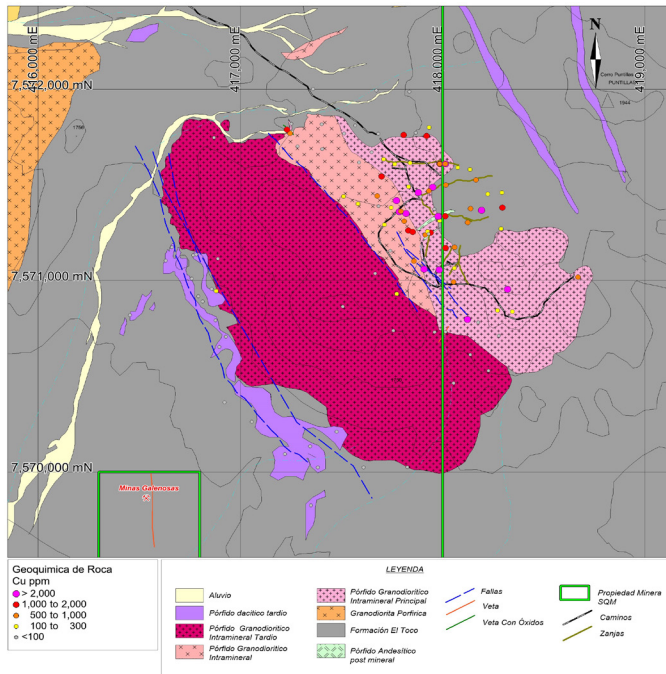


Solutions
for human
progress

Galenosa Sur

Basic Exploration

Prospect #22



CONTACT DETAILS

Jose Dias Cifuentes
New Metal Business Director
jose.dias.cifuentes@sqm.com
+56 9 7465 7359

Ricardo Gonzalez Montecinos
Metal Business and Exploration Manager
ricardo.gonzalez.montecinos@sqm.com
+56 9 6320 7257

www.sqm.com

