

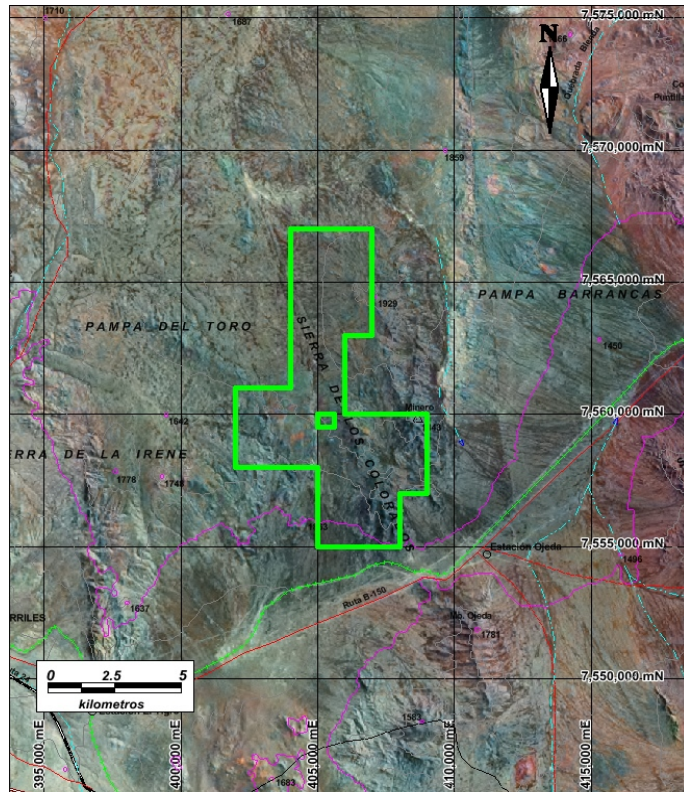
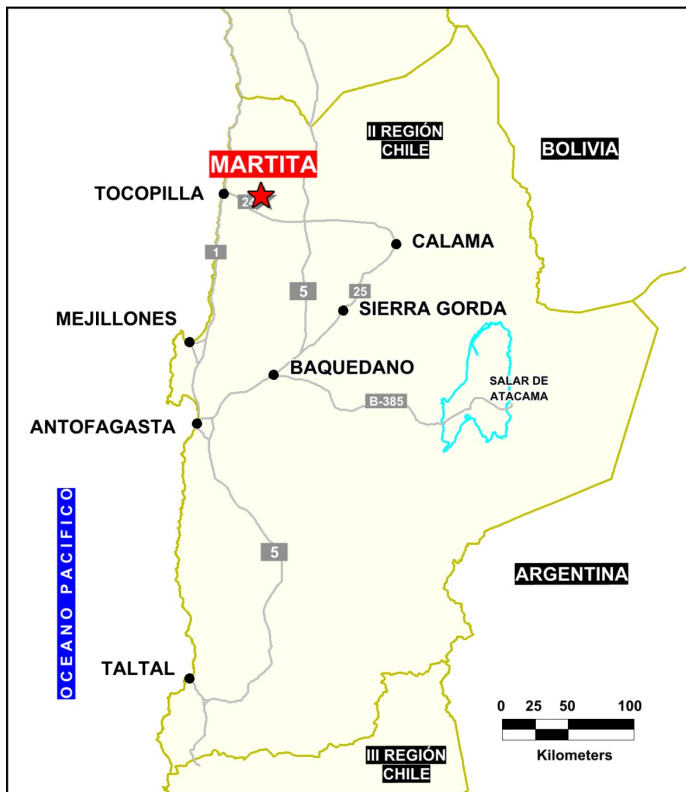


**Solutions  
for human  
progress**

**Martita**  
Generative Exploration  
Prospect #24

## SUMMARY

Adjacent to Martita Mine (small scale, N60W trending vein, grading between 1.3%Cu & 3.1% Cu). Andesites and granodiorites host disseminated crisocola and chalcocite with traces of chalcopyrite.



## HIGHLIGHTS

Central Northing (UTM):	7561000
Central Easting (UTM):	405100
Elevation (masl):	1760
Metal(s):	Cu
Deposit Style:	stratabound
Exploration Stage	Generative Exploration
Area (hectares)	4370
Nearest Project:	Tovaku (Pucobre Codelco)
Historical:	16 salt crust drillholes

## EXPLORATION WORK

Geological Mapping:	N/A
Geochemical Samples:	36
Trenching	N/A
Channel Samples	N/A
Geophysics:	N/A
RC Drill holes	N/A
DDH Drill holes:	N/A
Total drilling :	N/A
Other:	Scheduled work program by SQM 2018





**Solutions  
for human  
progress**

**Martita**  
Generative Exploration  
Prospect #24

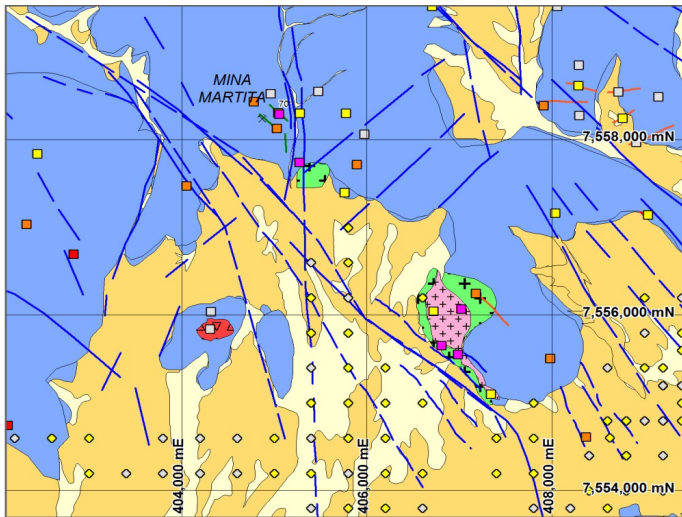


Fig. 3

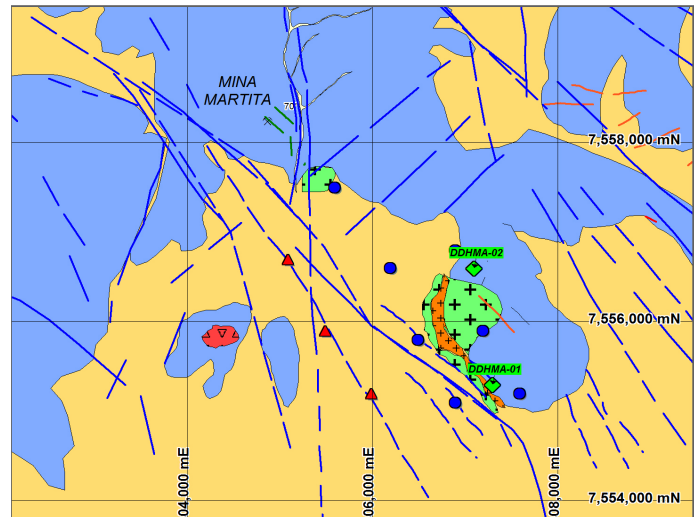


Fig. 5

## CONTACT DETAILS

**Jose Dias Cifuentes**  
New Metal Business Director  
jose.dias.cifuentes@sqm.com  
+56 9 7465 7359

**Ricardo Gonzalez Montecinos**  
Metal Business and Exploration Manager  
ricardo.gonzalez.montecinos@sqm.com  
+56 9 6320 7257

[www.sqm.com](http://www.sqm.com)

