



Solutions
for human
progress

Distrito El Inca

Advanced Exploration

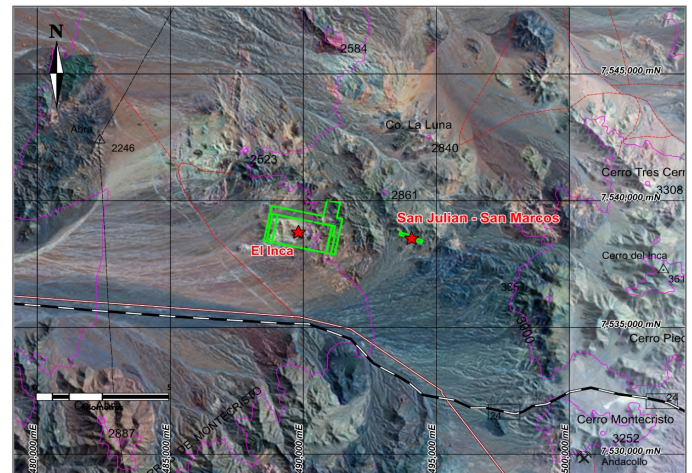
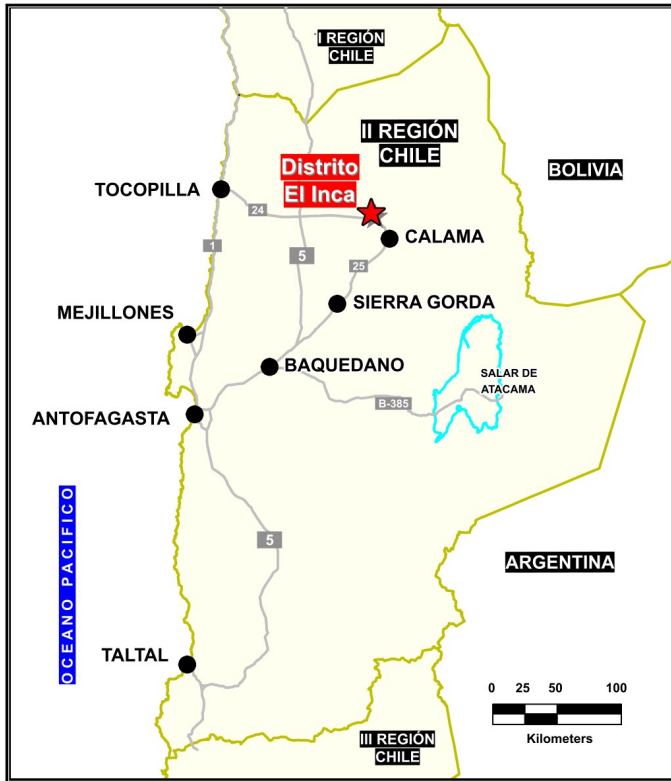
Prospect #29

SUMMARY

El Inca: Confirmed high grade Ag epithermal vein set; four steeply dipping, north-south trending veins each trace for up to 1000 metres.

Data review suggests porphyry copper potential in SW sector of concession.

San Julian and San Marcos: Epithermal vein set of seven narrow (~0.5m) subparallel structures oriented WNW-ESE spaced approximately 250 metres between veins. Traces of the veins varies between a couple hundred metres to 2.5 kilometres.



HIGHLIGHTS

Central Northing (UTM):	7538300
Central Easting (UTM):	492000
Elevation (masl):	2650
Metal(s):	Ag (Au)
Deposit Style:	Epithermal
Exploration Stage	Advanced Exploration
Area (hectares)	425
Nearest Project:	Chuquicamata
Historical:	exploited by Codelco

EXPLORATION WORK

Geological Mapping:	1:2000
Geochemical Samples:	2000
Trenching	N/A
Channel Samples	N/A
Geophysics:	3 lines IP, 3 lines IP gradient
RC Drill holes	7 (2319 m)
DDH Drill holes:	13 (3750 m)
Total drilling :	20 (6069 m)
Other:	60% cover



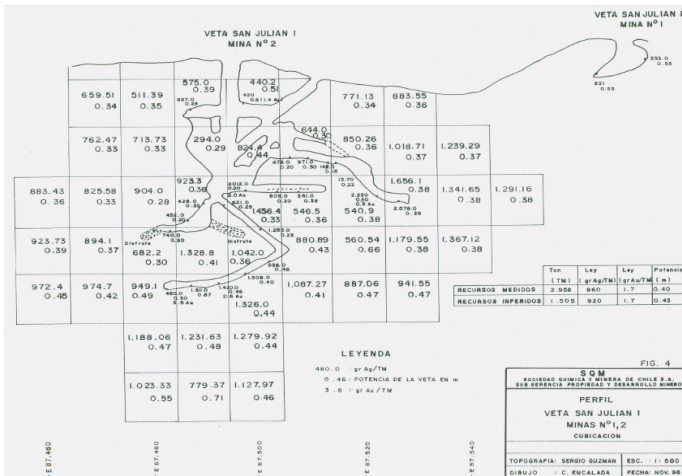
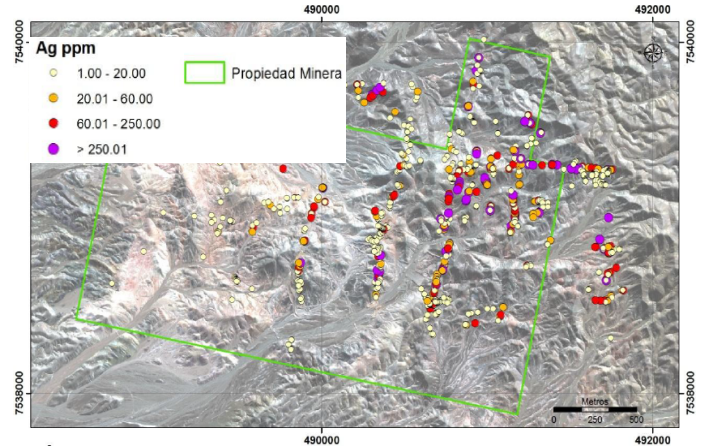
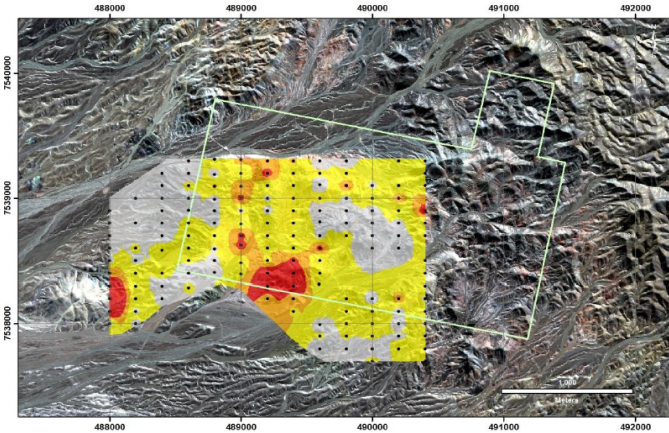


Solutions
for human
progress

Distrito El Inca

Advanced Exploration

Prospect #29



	Ag ppm	Au ppm	Cu %	Pb %	Zn %
N° samples	934	934	934	934	934
Promedio	68.5	0.12	0.03	0.29	0.11
Mínimo	0.5	0.005	0.001	0.01	0.01
Máximo	2483	2.1	1.1	9.86	3.32

Tabla 1: Resumen estadístico muestras de roca.

Historical information that has not been confirmed by SQM and is not to be considered NI43-101 compliant.

CONTACT DETAILS

Jose Dias Cifuentes
New Metal Business Director
jose.dias.cifuentes@sqm.com
+56 9 7465 7359

Ricardo Gonzalez Montecinos
Metal Business and Exploration Manager
ricardo.gonzalez.montecinos@sqm.com
+56 9 6320 7257

www.sqm.com

