



Solutions  
for human  
progress

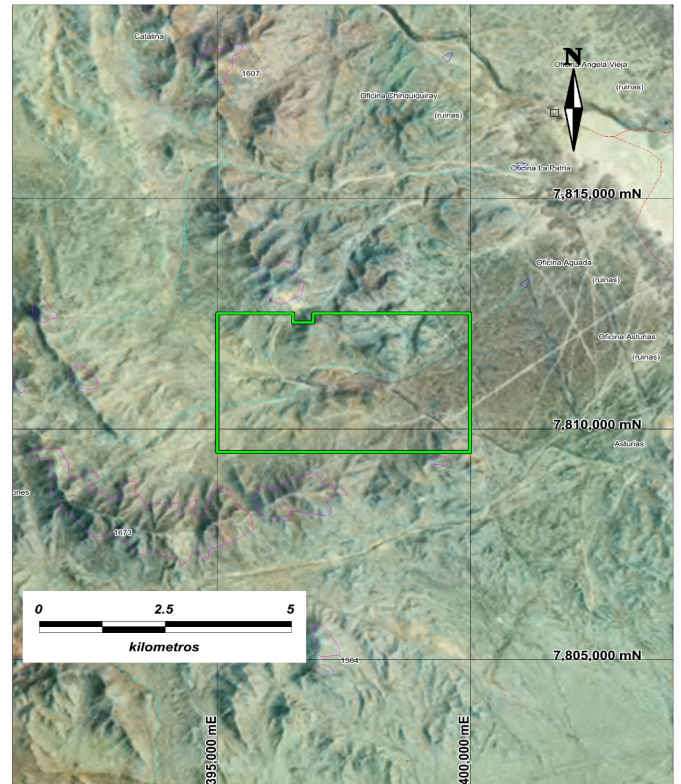
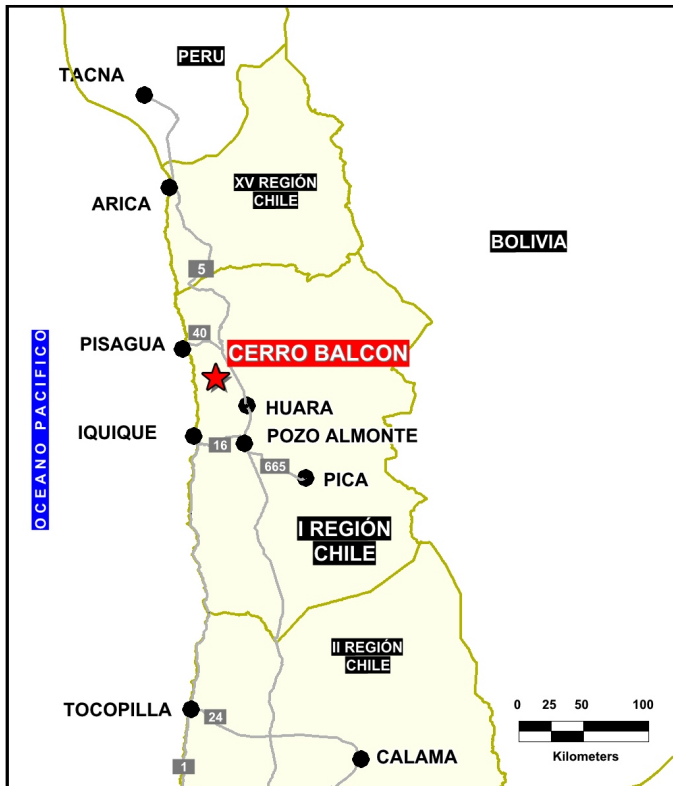
# Cerro Balcon

Advanced Exploration

Prospect #3

## SUMMARY

Surface mapping has identified a phreatomagmatic breccias, bearing fragments of stockwork mineralized porphyry granodiorite.



## HIGHLIGHTS

Central Northing (UTM):	7812500
Central Easting (UTM):	397500
Elevation (masl):	1450
Metal(s):	Cu (Au)
Deposit Style:	Porphyry
Exploration Stage	Advanced Exploration
Area (hectares)	2500
Nearest Project:	New potential district
Historical:	15 salt crust samples

## EXPLORATION WORK

Geological Mapping:	1:5000
Geochemical Samples:	50
Trenching	N/A
Channel Samples	N/A
Geophysics:	N/A
RC Drill holes	25 (4468 m)
DDH Drill holes:	2 (764 m)
Total drilling :	27 (5232 m)
Other:	N/A



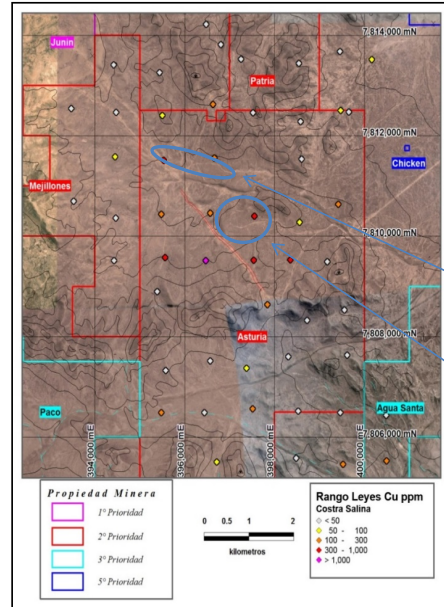


Solutions  
for human  
progress

# Cerro Balcon

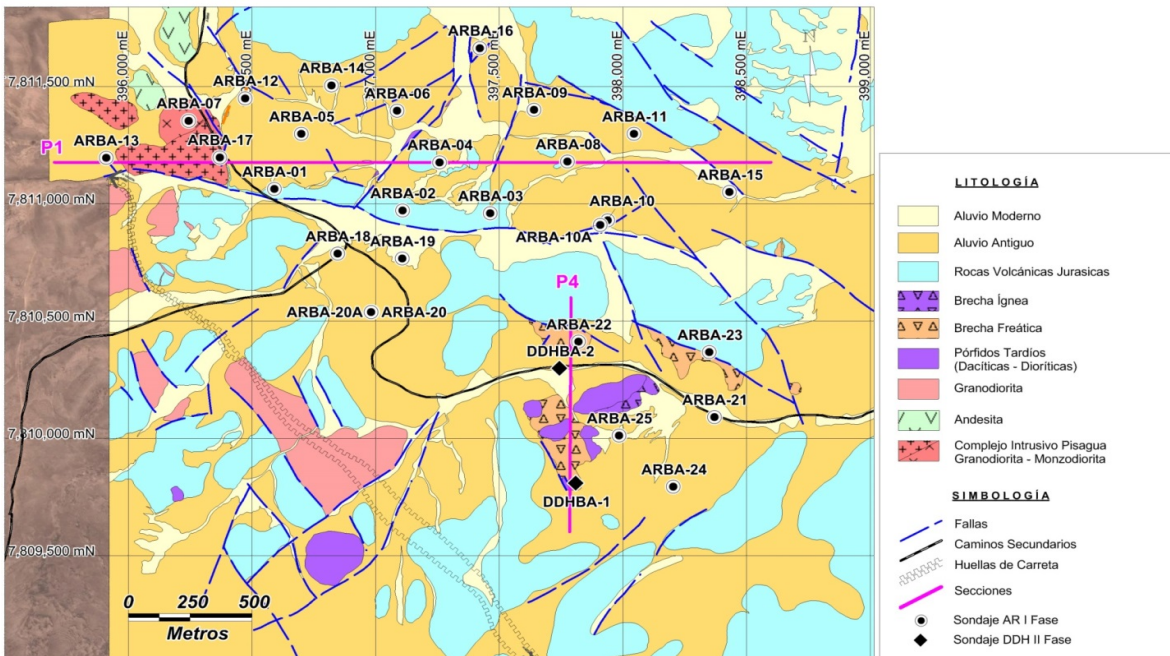
Advanced Exploration

Prospect #3



Cerro Balcón Norte

Cerro Balcón Sur



## CONTACT DETAILS

Jose Dias Cifuentes  
New Metal Business Director  
jose.dias.cifuentes@sqm.com  
+56 9 7465 7359

Ricardo Gonzalez Montecinos  
Metal Business and Exploration Manager  
ricardo.gonzalez.montecinos@sqm.com  
+56 9 6320 7257

[www.sqm.com](http://www.sqm.com)

