

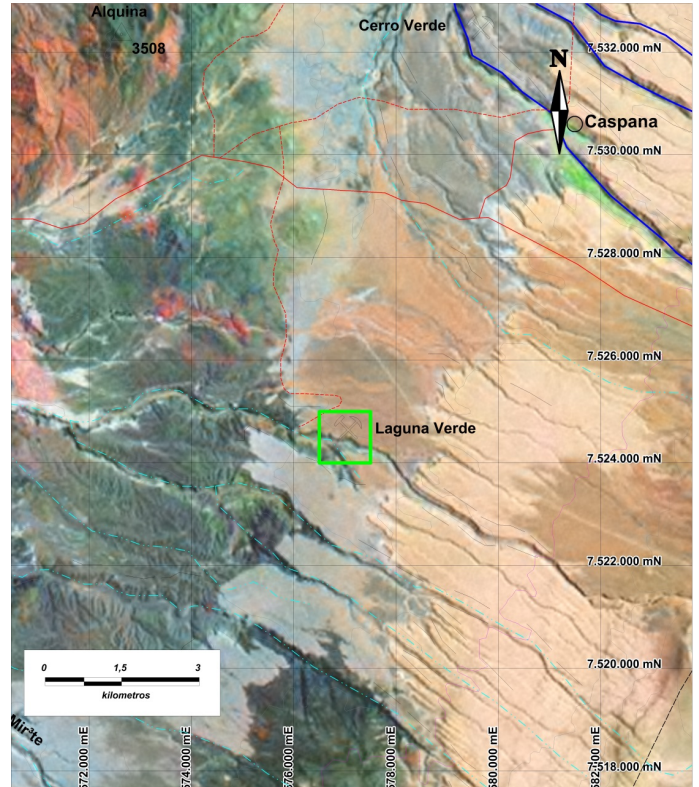
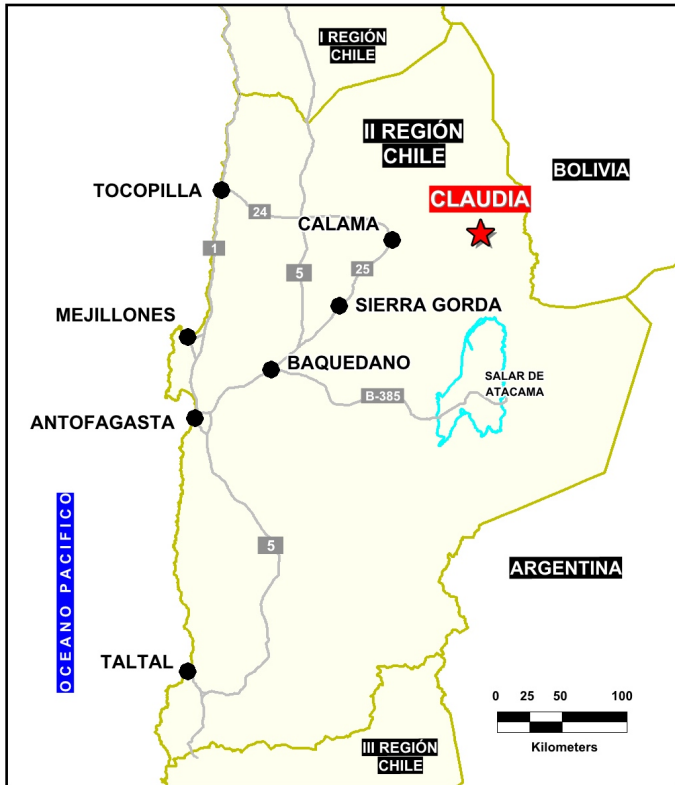


**Solutions  
for human  
progress**

**Claudia**  
Advanced Exploration  
Prospect #30

## SUMMARY

The area is covered by ignimbrites but a window of outcrop exists in a stream valley that shows copper mineralization at surface, chalcocite, similar to other deposits in the area Esther (Codelco) and Mina Tuina (RMG and others).  
Strong magnetite alteration/mineralization associated with copper mineralization (oxide and sulphide; up to 1.5% CuT) suggests next step magnetometry survey for drill targeting.



## HIGHLIGHTS

Central Northing (UTM):	7524000
Central Easting (UTM):	576800
Elevation (masl):	3300
Metal(s):	Cu (Au)
Deposit Style:	IOCG
Exploration Stage	Advanced Exploration
Area (hectares)	100
Nearest Project:	Tuina
Historical:	small tunnels and shafts

## EXPLORATION WORK

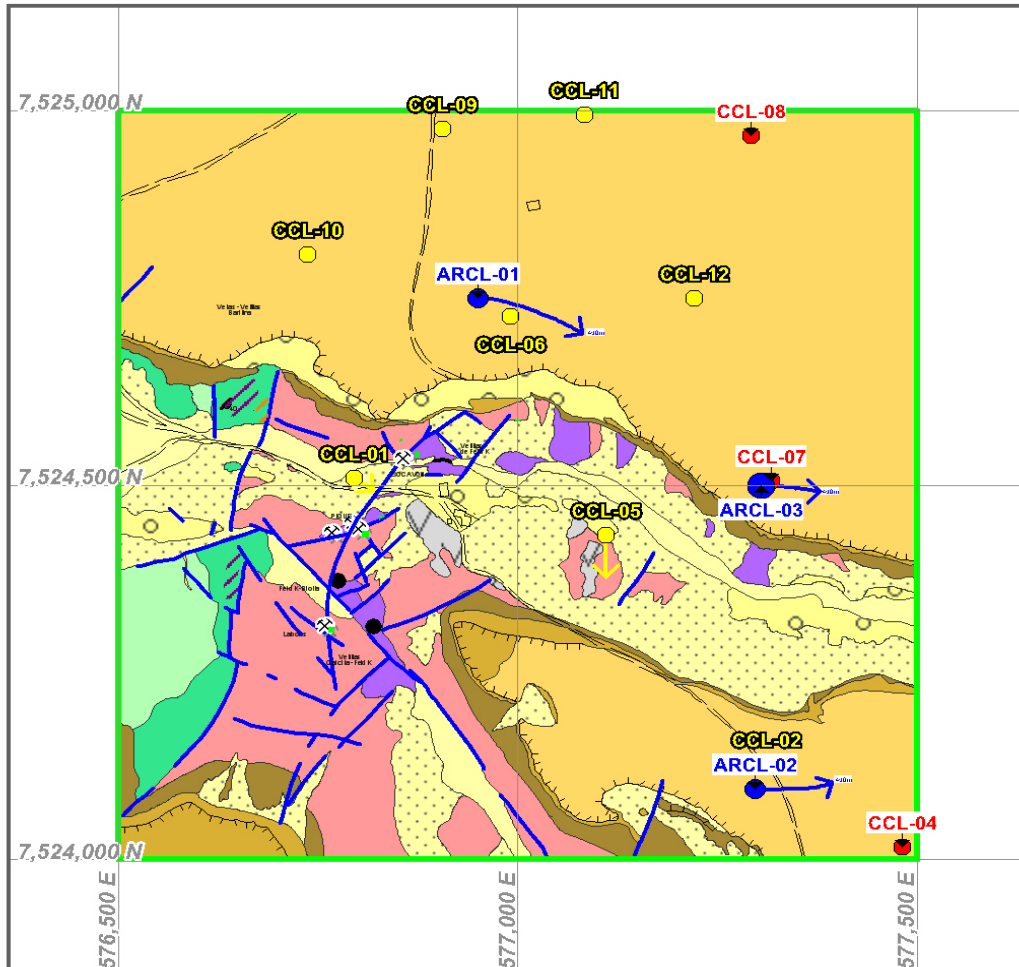
Geological Mapping:	1:2000
Geochemical Samples:	26
Trenching	N/A
Channel Samples	26
Geophysics:	N/A
RC Drill holes	15 (2416 m)
DDH Drill holes:	N/A
Total drilling :	15 (2416 m)
Other:	80% cover





Solutions  
for human  
progress

**Claudia**  
Advanced Exploration  
Prospect #30



LEYENDA		SIMBOLOGÍA	
	Cobertura aluvial		Labores
	Sedimentos coluviales		Construcciones
	Sedimentos aluviales predominantemente finos		Caminos
	Sedimentos aluviales en terrazas		Sondajes geoquímicos WD
	Rocas sedimentarias cretácicas de Formación Purilicós		Sondajes Aire reverso
	a) Ignimbrita		Fallas
	b) Brechas sedimentarias		Diorita cuarzofera
	Rocas volcánicas andesíticas		Monzogreno-diorita
			Vetas-veillas barrita
			Presencia oxidados de cobre en superficie
			Borde planicie

## CONTACT DETAILS

Jose Dias Cifuentes  
New Metal Business Director  
jose.dias.cifuentes@sqm.com  
+56 9 7465 7359

Ricardo Gonzalez Montecinos  
Metal Business and Exploration Manager  
ricardo.gonzalez.montecinos@sqm.com  
+56 9 6320 7257

[www.sqm.com](http://www.sqm.com)

