



Solutions
for human
progress

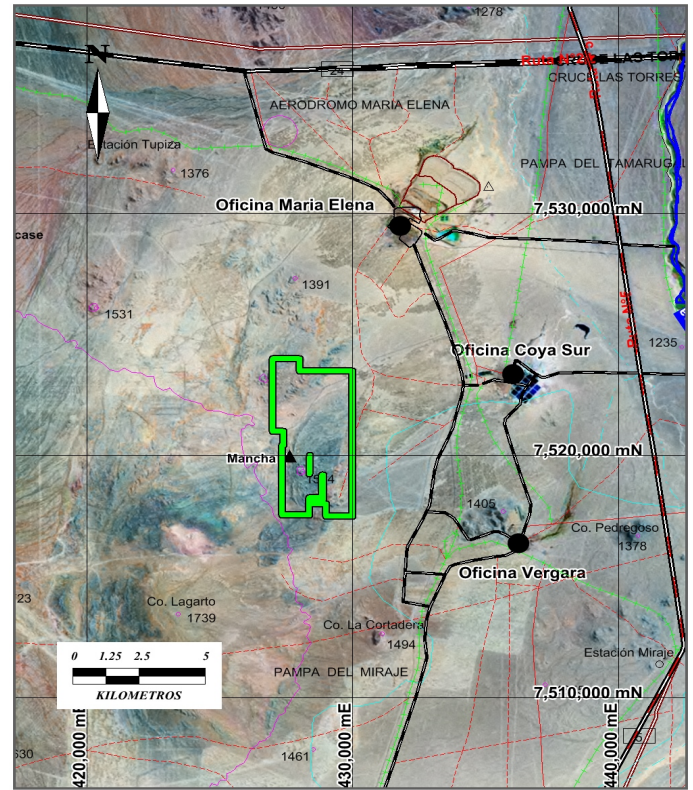
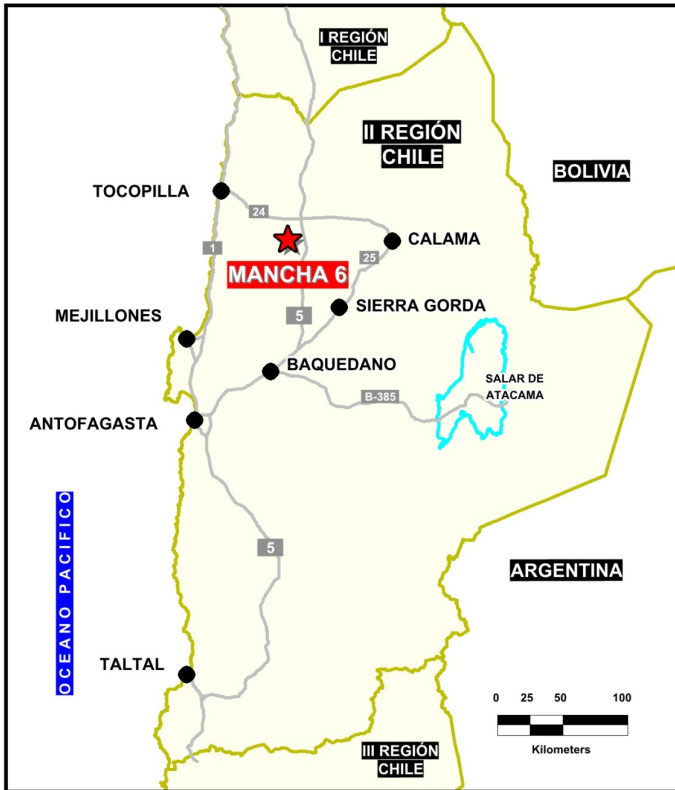
Mancha 6

Basic Exploration

Prospect #31

SUMMARY

2.5 km long NE trending zone of intensely acid leached silicified and argillized hydrothermal breccias



HIGHLIGHTS

Central Northing (UTM):	7520250
Central Easting (UTM):	428000
Elevation (masl):	1500
Metal(s):	Cu, Au
Deposit Style:	Epithermal, porphyry
Exploration Stage	Basic Exploration
Area (hectares)	1676
Nearest Project:	Antucoya
Historical:	-

EXPLORATION WORK

Geological Mapping:	1:2000
Geochemical Samples:	N/A
Trenching	N/A
Channel Samples	N/A
Geophysics:	N/A
RC Drill holes	2 (430 m)
DDH Drill holes:	N/A
Total drilling :	2 (430 m)
Other:	XRD (quartz, barite, kaolinite)





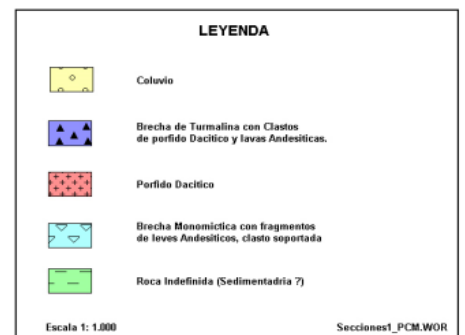
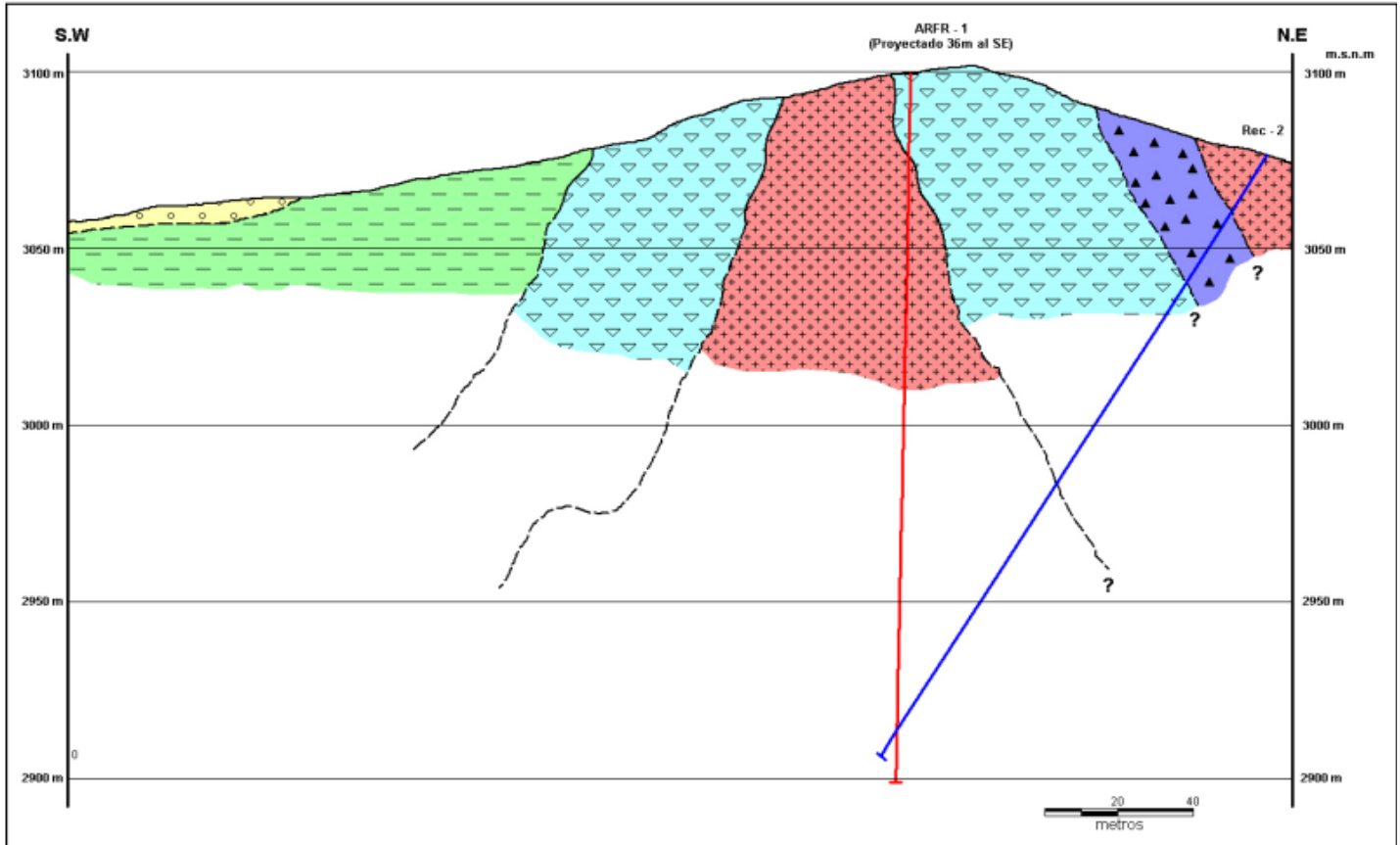
Solutions
for human
progress

Mancha 6

Basic Exploration

Prospect #31

SECCION N°1



CONTACT DETAILS

Jose Dias Cifuentes
New Metal Business Director
jose.dias.cifuentes@sqm.com
+56 9 7465 7359

Ricardo Gonzalez Montecinos
Metal Business and Exploration Manager
ricardo.gonzalez.montecinos@sqm.com
+56 9 6320 7257

www.sqm.com

