



**Solutions
for human
progress**

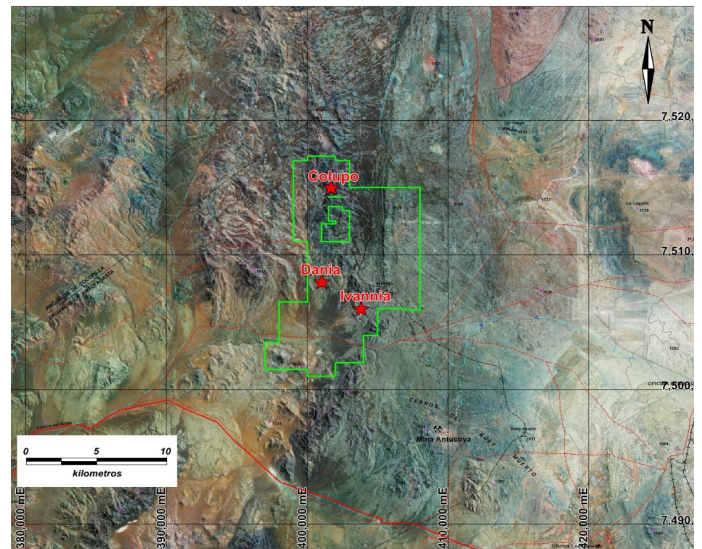
Distrito Colupito

Advanced Exploration

Prospect #33

SUMMARY

COLUPO: Copper mineralization hosted by tourmaline bearing breccias associated with the Atacama Fault zone. Drill intercepts include 32m @ 1.4% CuT (1.3%CuS), 2 m @ 2.3%CuT (1.9%CuS), and 24m @ 1%CuT (0.6%CuS). Within newly developing Antucoya copper district. **DANIA:** Various porphyry dacites to rhyolites intruding the volcano-sedimentary La Negra Formation. Anomalous copper and molybdenum results in the series of short drill holes across the area. **IVANNIA:** Various porphyry dacites to rhyolites intruding the volcano-sedimentary La Negra Formation. Anomalous copper and molybdenum results in the series of short drill holes across the area.



HIGHLIGHTS

Central Northing (UTM):	7511000
Central Easting (UTM):	402500
Elevation (masl):	2000
Metal(s):	Cu (Au)
Deposit Style:	IOCG
Exploration Stage	Advanced Exploration
Area (hectares)	2734
Nearest Project:	Antucoya
Historical:	pits

EXPLORATION WORK

Geological Mapping:	1:500
Geochemical Samples:	334
Trenching	19
Channel Samples	125
Geophysics:	IP, ground mag
RC Drill holes	80 (8654 m)
DDH Drill holes:	6 (1290 m)
Total drilling :	86 (9944 m)
Other:	60% cover



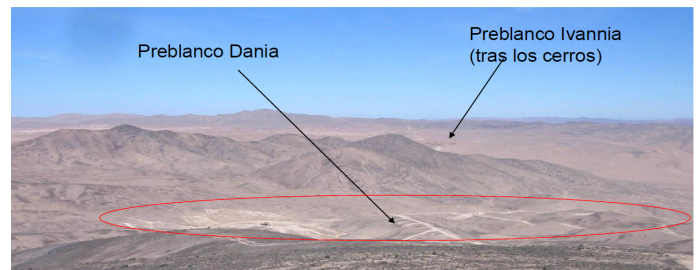
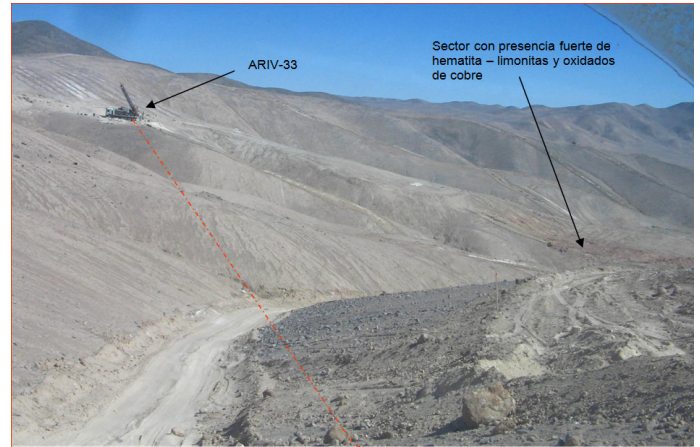
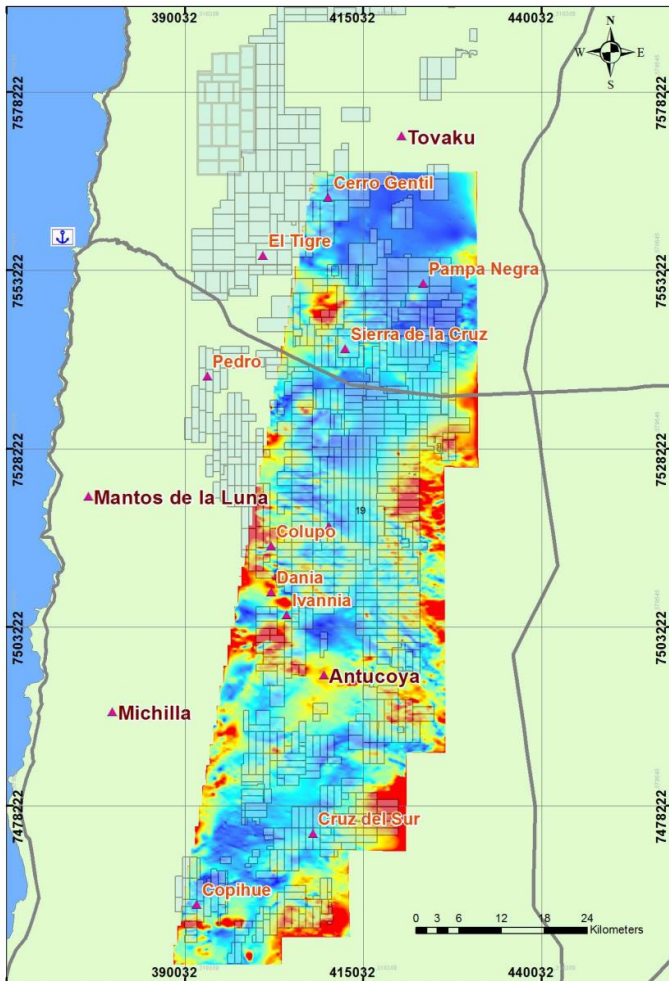


Solutions
for human
progress

Distrito Colupito

Advanced Exploration

Prospect #33



CONTACT DETAILS

Jose Dias Cifuentes
New Metal Business Director
jose.dias.cifuentes@sqm.com
+56 9 7465 7359

Ricardo Gonzalez Montecinos
Metal Business and Exploration Manager
ricardo.gonzalez.montecinos@sqm.com
+56 9 6320 7257

www.sqm.com

