



Solutions
for human
progress

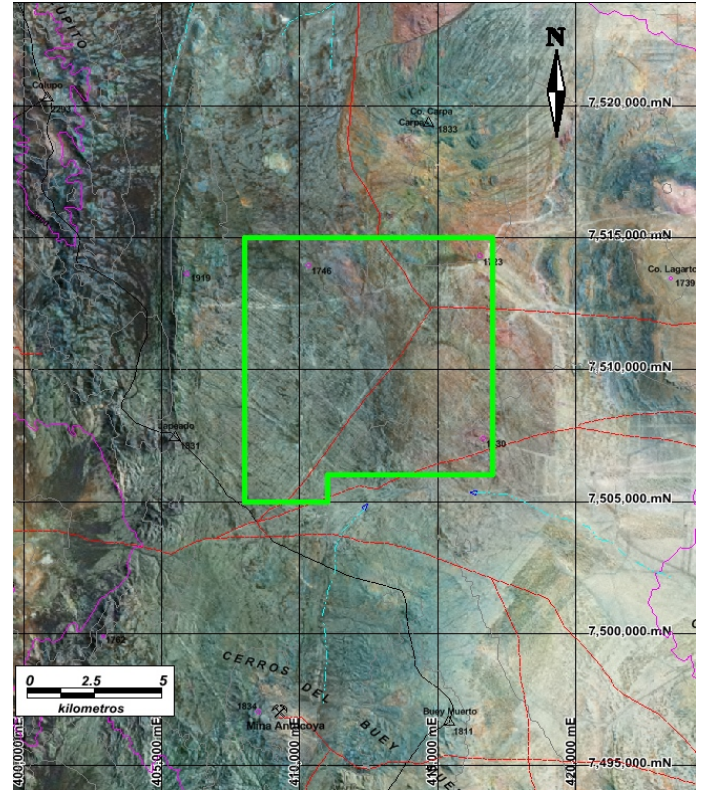
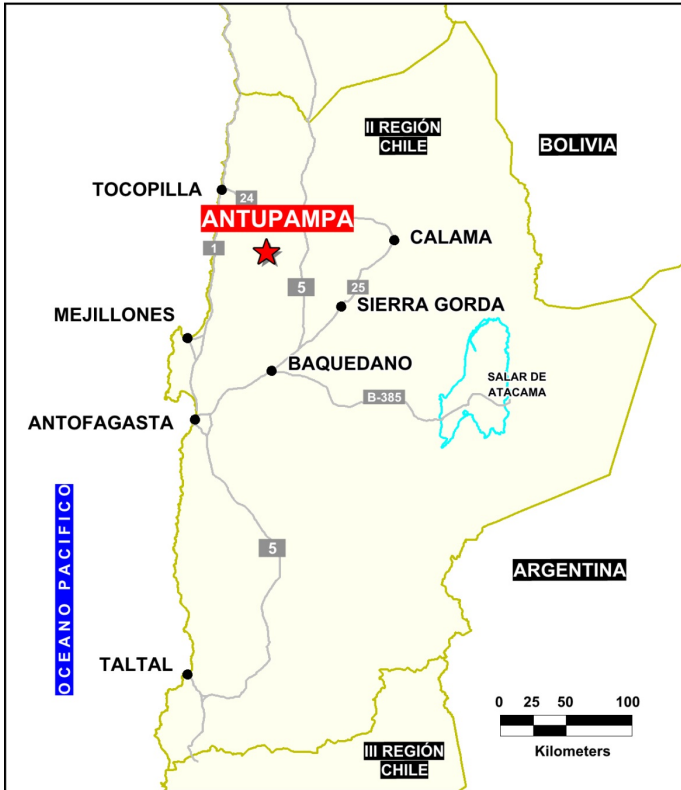
Antupampa

Basic Exploration

Prospect #36

SUMMARY

Conceptual target 100% gravel covered based on bottom of hole geochemistry from nitrate resource drill holes. Follow-up “top of bedrock” drilling suggests target to the west on trend from Antucoya Mine.



HIGHLIGHTS

Central Northing (UTM):	7510000
Central Easting (UTM):	412400
Elevation (masl):	1640
Metal(s):	Cu
Deposit Style:	Porphyry
Exploration Stage	Basic Exploration
Area (hectares)	8400
Nearest Project:	Antucoya
Historical:	699 salt crust drillholes

EXPLORATION WORK

Geological Mapping:	1:25000
Geochemical Samples:	44
Trenching	N/A
Channel Samples	N/A
Geophysics:	N/A
RC Drill holes	33 (5827 m)
DDH Drill holes:	N/A
Total drilling :	33 (5827 m)
Other:	petrography



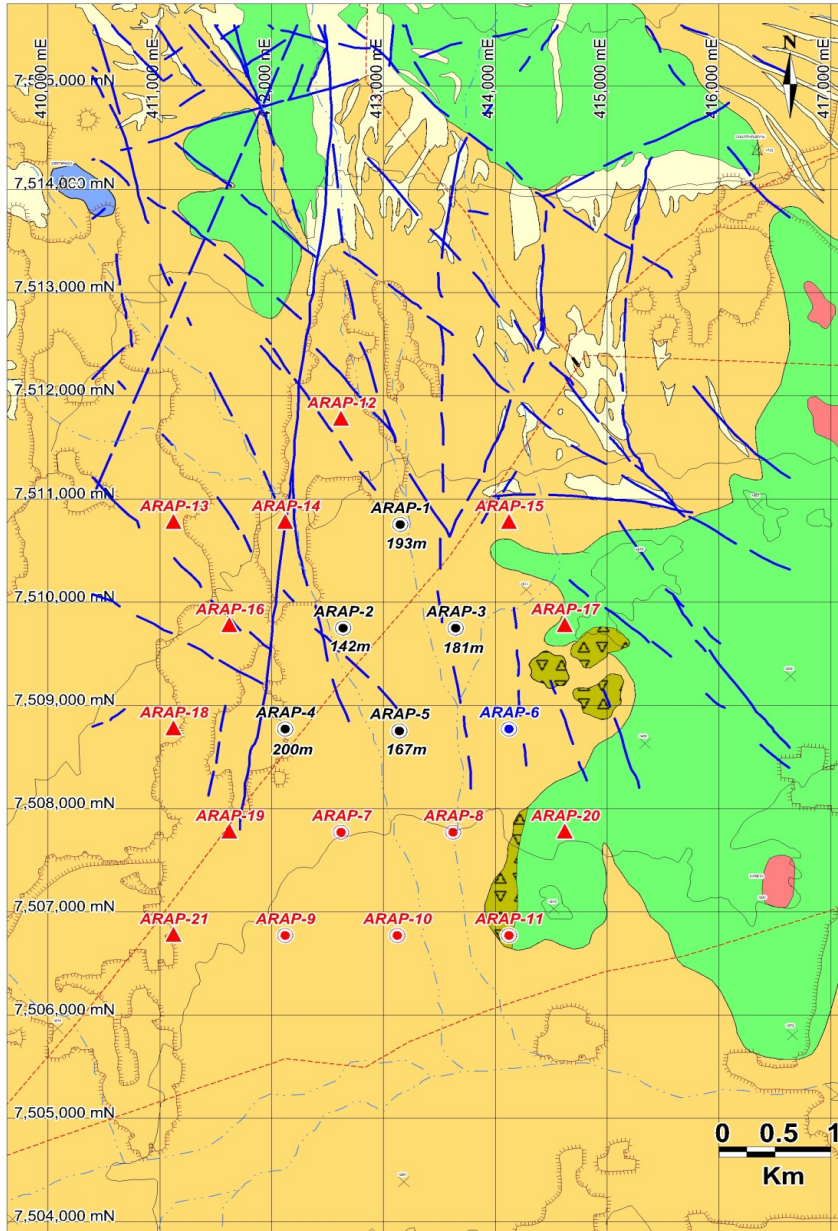


**Solutions
for human
progress**

Antupampa

Basic Exploration

Prospect #36



LEYENDA

- Depositos Aluviales Modernos
- Depositos Aluviales Antiguos
- Rx Volcanicas Cretacicas (Tobas y Andesitas)
- Rx Volcanicas FM La Negra
- Intrusivo del Jurásico Superior Cretácico
- Brecha Tectónica
- Fallas

SIMBOLOGIA

- Explotacion Calichera
- Curvas de nivel
- Drenaje
- Huella
- Sondaje Finalizado
- Sondaje Perforando
- Sondajes Propuestos 1° Prioridad
- Sondajes Propuestos 2° Prioridad

CONTACT DETAILS

Jose Dias Cifuentes
New Metal Business Director
jose.dias.cifuentes@sqm.com
+56 9 7465 7359

Ricardo Gonzalez Montecinos
Metal Business and Exploration Manager
ricardo.gonzalez.montecinos@sqm.com
+56 9 6320 7257

www.sqm.com

