



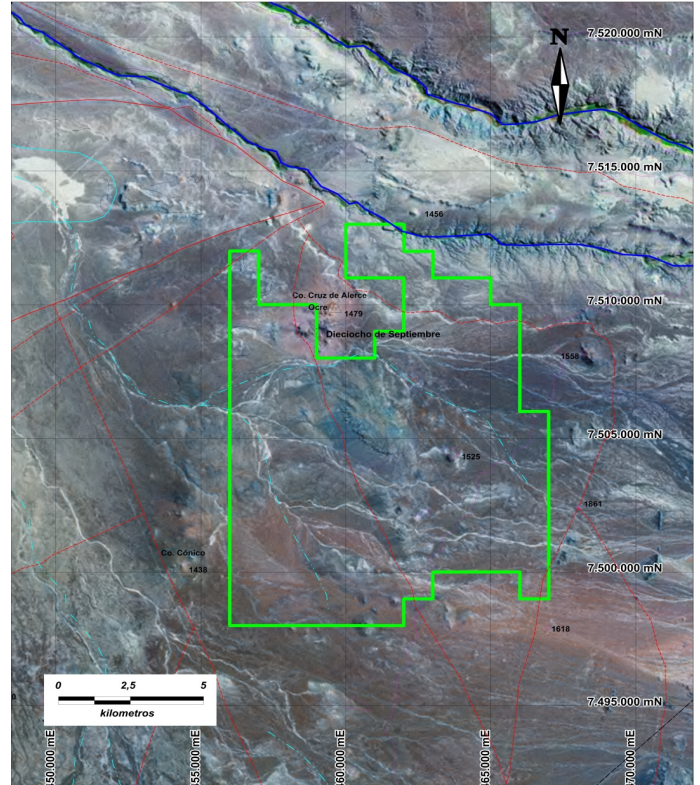
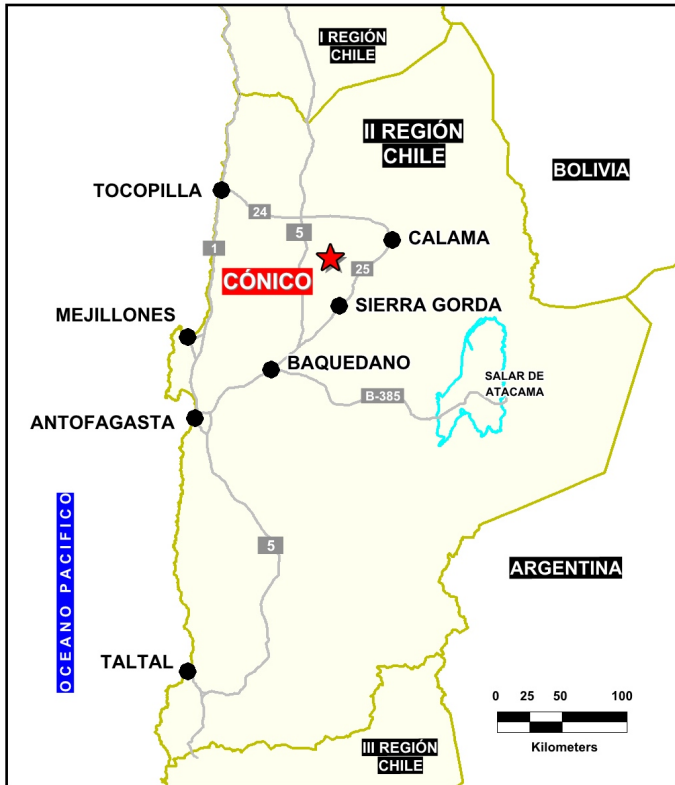
Solutions
for human
progress

Conico
Basic Exploration
Prospect #37

SUMMARY

Lithocap present within a strong structural corridor adjacent to Spence and Sierra Gorda copper mines. Extensive bottom of hole grid drilled samples indicate anomalous values for copper and molybdenum beneath the caliche cover.

Typhoon geophysical survey by HPX generated IP targets.



HIGHLIGHTS

Central Northing (UTM):	7503500
Central Easting (UTM):	461000
Elevation (masl):	1470
Metal(s):	Cu (Au)
Deposit Style:	Porphyry
Exploration Stage	Basic Exploration
Area (hectares)	12000
Nearest Project:	Spence, Sierra Gorda
Historical:	163 salt crust, David Lowell, Phelps Dodge

EXPLORATION WORK

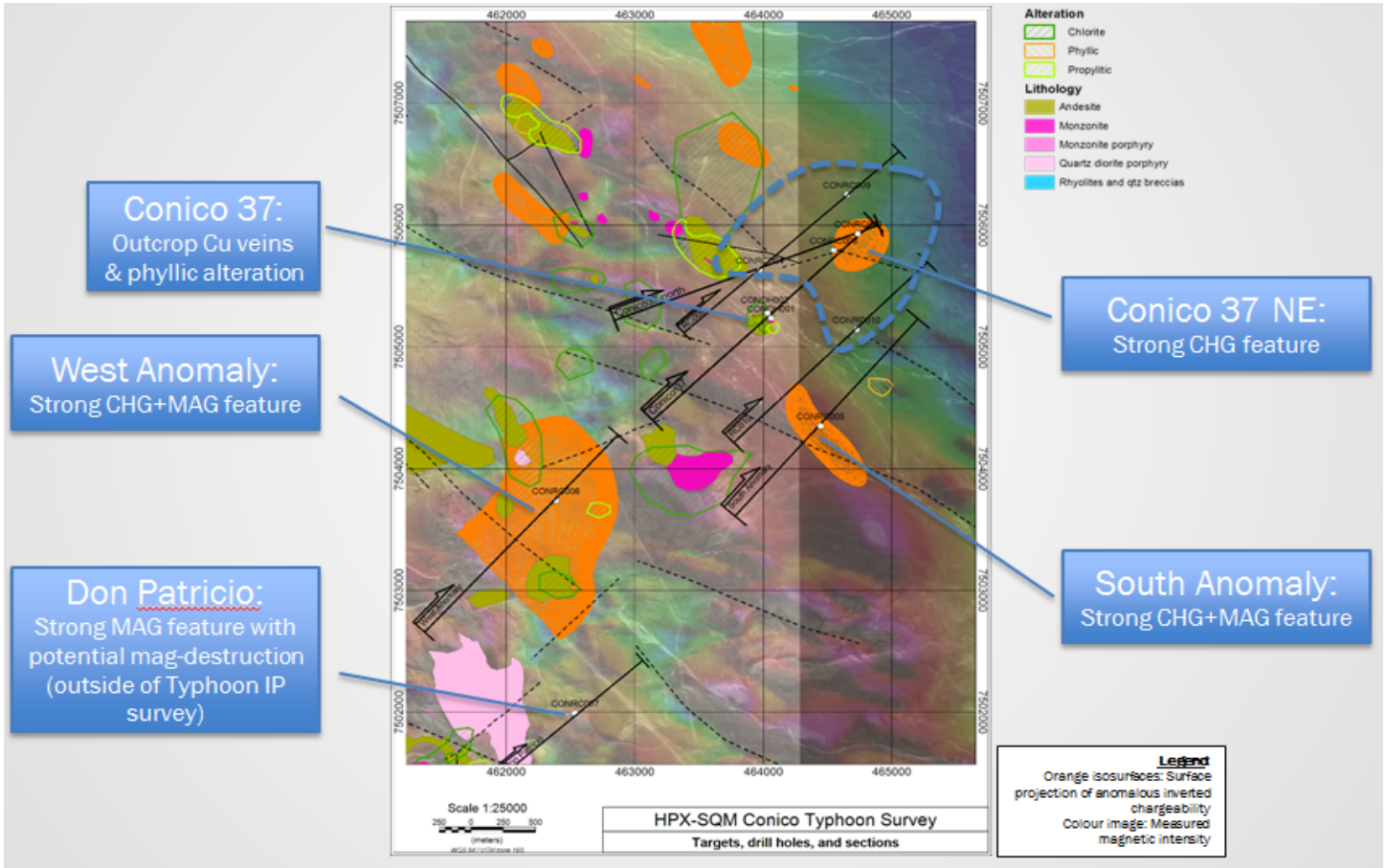
Geological Mapping:	1:5000
Geochemical Samples:	472 (wagon drill)
Trenching	N/A
Channel Samples	N/A
Geophysics:	IP, ground mag
RC Drill holes	8 (1742m)
DDH Drill holes:	2 (255 m)
Total drilling :	10 (1997 m)
Other:	80% cover





Solutions
for human
progress

Conico
Basic Exploration
Prospect #37



CONTACT DETAILS

Jose Dias Cifuentes
New Metal Business Director
jose.dias.cifuentes@sqm.com
+56 9 7465 7359

Ricardo Gonzalez Montecinos
Metal Business and Exploration Manager
ricardo.gonzalez.montecinos@sqm.com
+56 9 6320 7257

www.sqm.com

