



Solutions  
for human  
progress

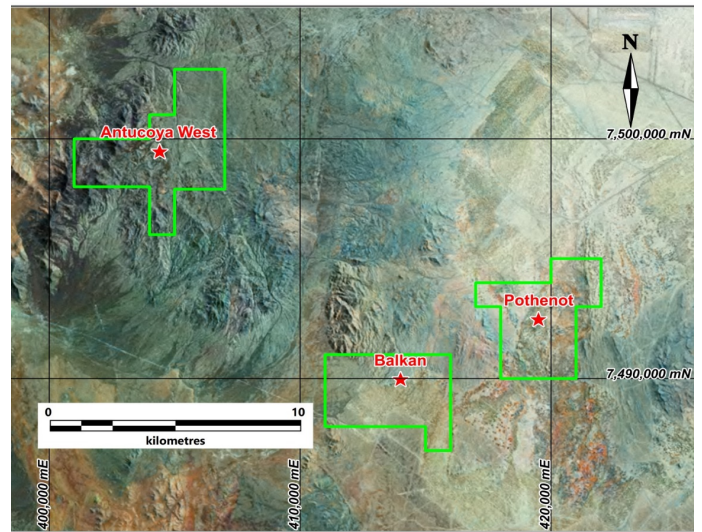
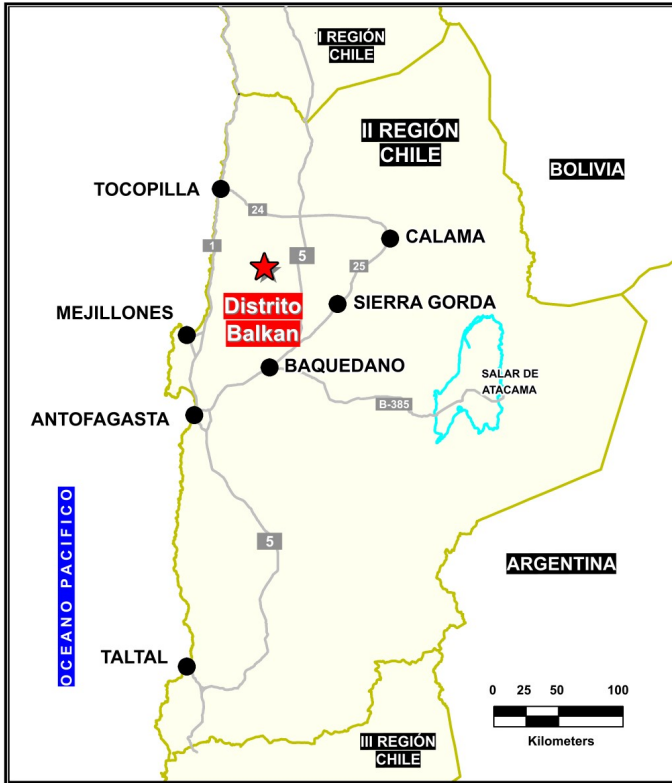
# Distrito Balkan

Generative Exploration

Prospect #38

## SUMMARY

**Antucoya West:** Covered area along NW trending structural corridor from the Antucoya copper mine with drill ready chargeability / resistivity anomaly.  
**Pothenot:** Quartz-barite-copper oxide veins associated with the Atacama Fault system and near the contact between Jurassic granodioritic porphyry and Cretaceous volcano-sedimentary unit of the Balkan Group.  
**Balkan:** Approximately 2km X 2km leached area with adjacent samples of anomalous copper and molybdenite southeast of the Antucoya copper mine.



## HIGHLIGHTS

Central Northing (UTM):	7495000
Central Easting (UTM):	410000
Elevation (masl):	1600
Metal(s):	Cu (Au)
Deposit Style:	porphyry/breccias
Exploration Stage	Generative Exploration
Area (hectares)	21228
Nearest Project:	Antucoya
Historical:	637 salt crust drillholes

## EXPLORATION WORK

Geological Mapping:	1:25000
Geochemical Samples:	114
Trenching	N/A
Channel Samples	N/A
Geophysics:	IP, ground mag
RC Drill holes	N/A
DDH Drill holes:	N/A
Total drilling :	N/A
Other:	50% covered







Solutions  
for human  
progress

# Distrito Balkan

Generative Exploration

Prospect #38

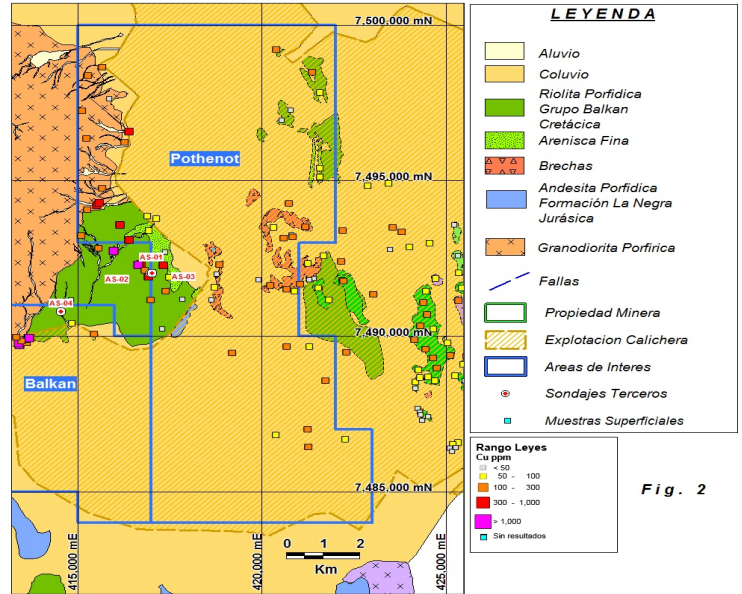
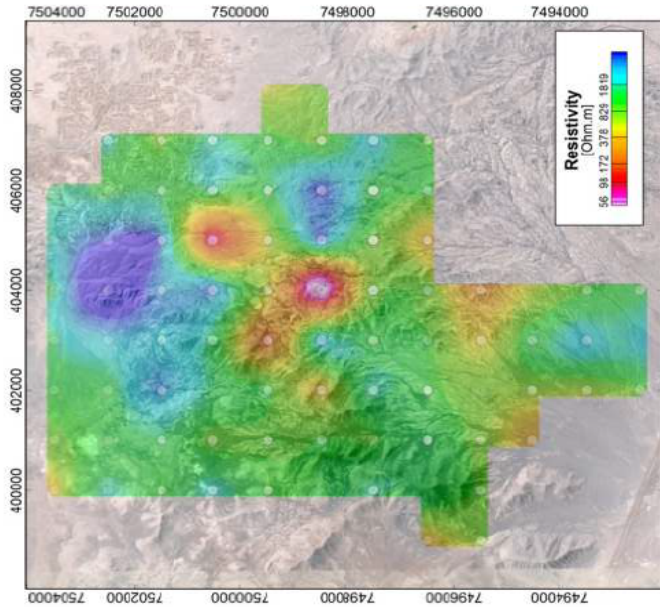


Fig. 2

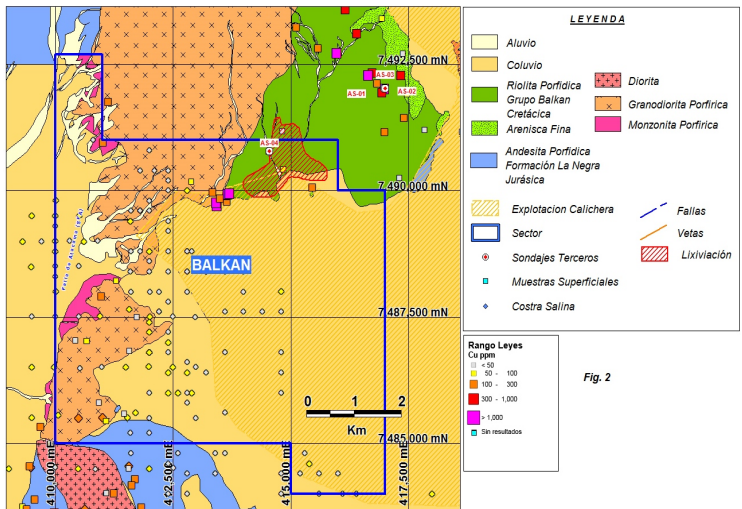
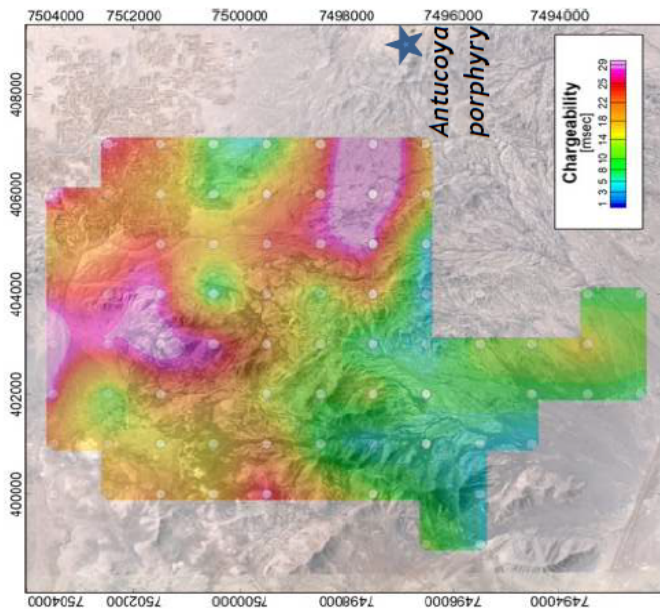


Fig. 2

## CONTACT DETAILS

Jose Dias Cifuentes  
New Metal Business Director  
jose.dias.cifuentes@sqm.com  
+56 9 7465 7359

Ricardo Gonzalez Montecinos  
Metal Business and Exploration Manager  
ricardo.gonzalez.montecinos@sqm.com  
+56 9 6320 7257

[www.sqm.com](http://www.sqm.com)

