

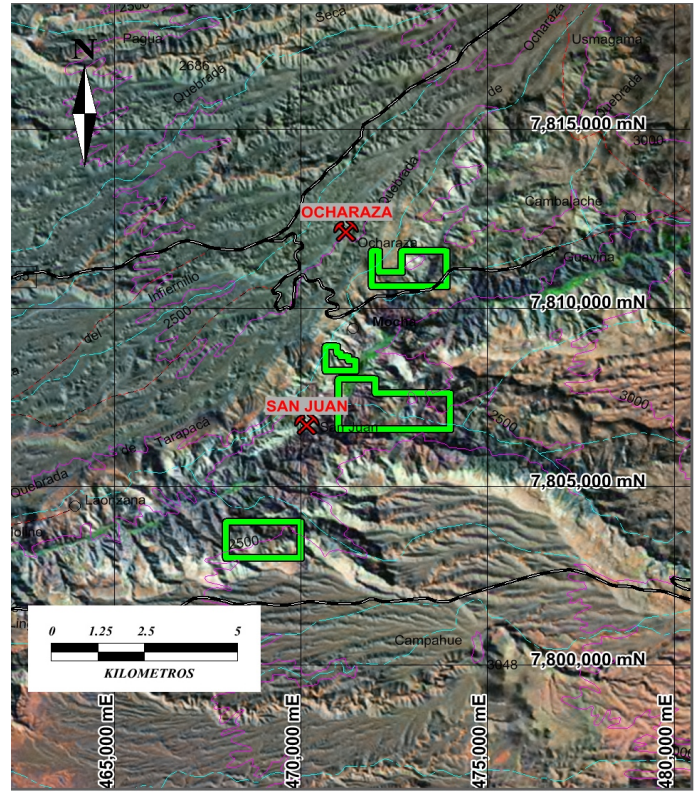
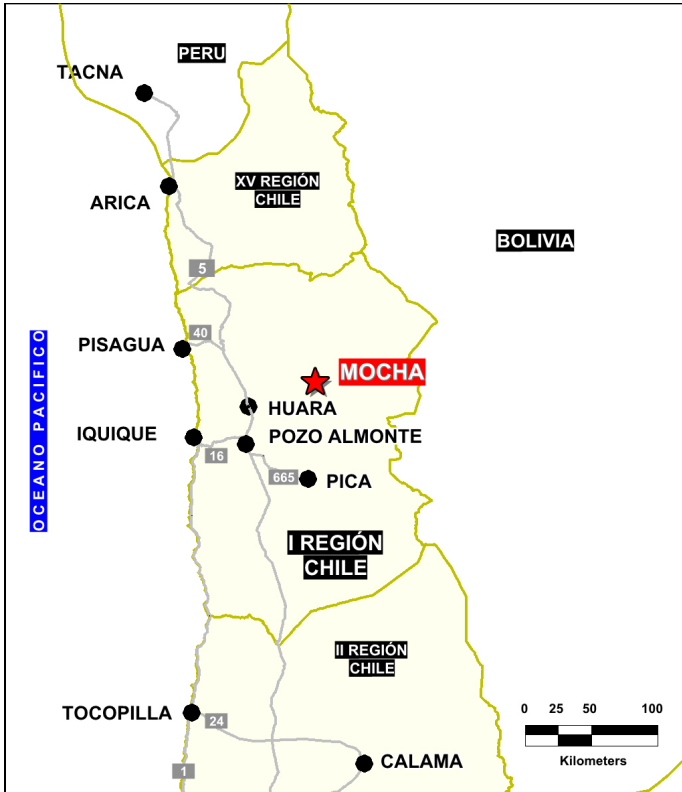


**Solutions
for human
progress**

Mocha
Generative Exploration
Prospect #4

SUMMARY

Within concessions a number of veins have been identified with average grades of 1.2%Cu and 0.5 g/t Au. Historical workings in the district include Angela produced 455t of Cu (average grade 19.8%Cu, 49g/t Ag); Chipamani produced 153t Cu (average grades 15%Cu, 172 g/t Ag, 10 g/t Au), and Tres Puntas that produced 22 t Cu (average grades 13 % Cu, 272 g/t Ag, 2 g/t Au). Adjacent to the Mocha porphyry copper prospect (CODELCO); 97 Mt at 1% Cu and 0.03% Mo (Hollister, 1973)



HIGHLIGHTS

Central Northing (UTM):	7809600
Central Easting (UTM):	471300
Elevation (masl):	2500
Metal(s):	Cu & Au
Deposit Style:	Veins related with porphyry
Exploration Stage	Generative Exploration
Area (hectares)	744
Nearest Project:	Cerro Colorado (BHP) and Ocharaza
Historical:	Surface vein systems

EXPLORATION WORK

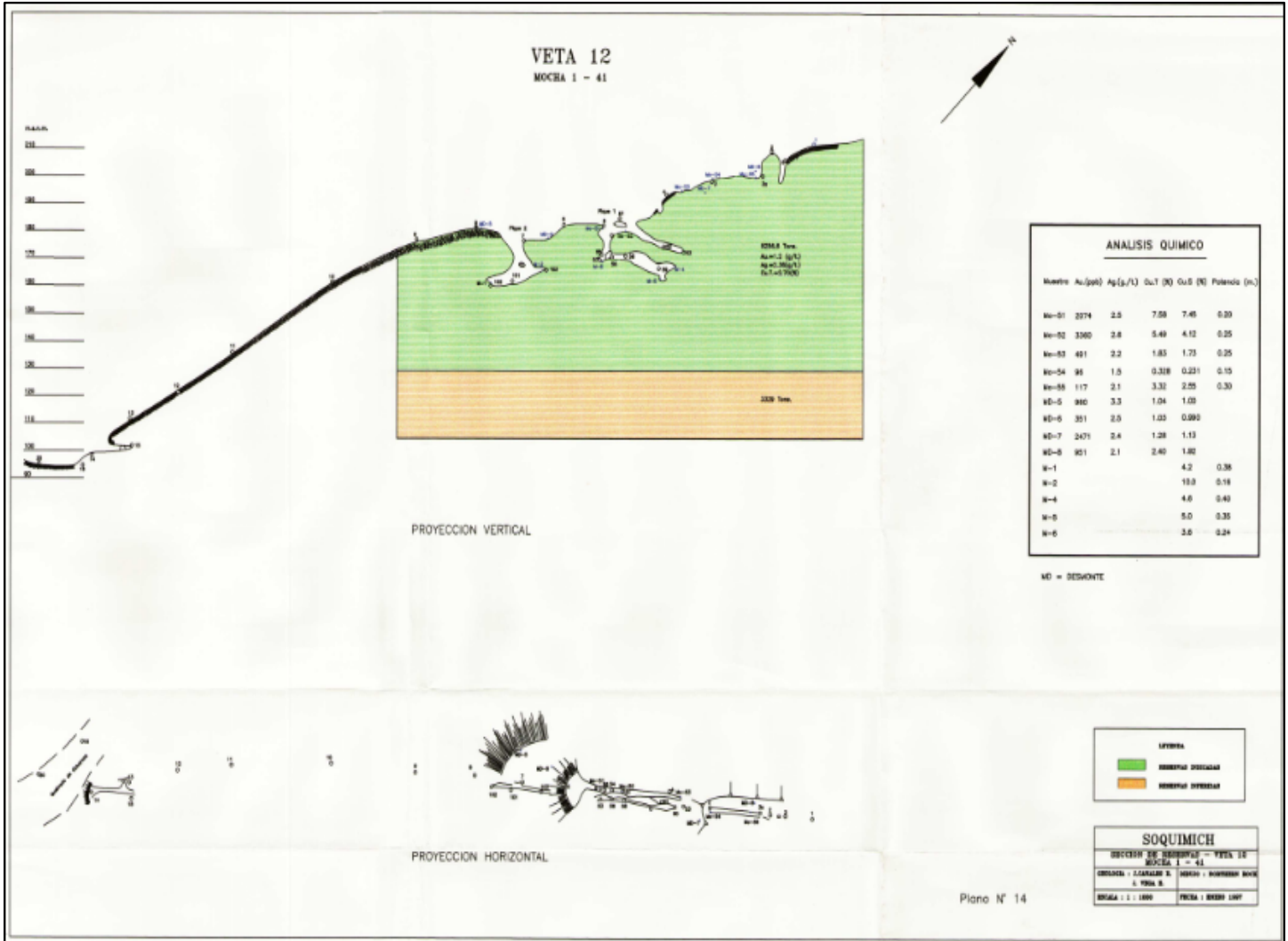
Geological Mapping:	1:5000
Geochemical Samples:	> 50
Trenching	N/A
Channel Samples	N/A
Geophysics:	N/A
RC Drill holes	N/A
DDH Drill holes:	N/A
Total drilling :	N/A
Other:	53,4 Ma (K-Ar; Munizaga)





Solutions
for human
progress

Mocha
Generative Exploration
Prospect #4



CONTACT DETAILS

Jose Dias Cifuentes
New Metal Business Director
jose.dias.cifuentes@sqm.com
+56 9 7465 7359

Ricardo Gonzalez Montecinos
Metal Business and Exploration Manager
ricardo.gonzalez.montecinos@sqm.com
+56 9 6320 7257

www.sqm.com

