



**Solutions
for human
progress**

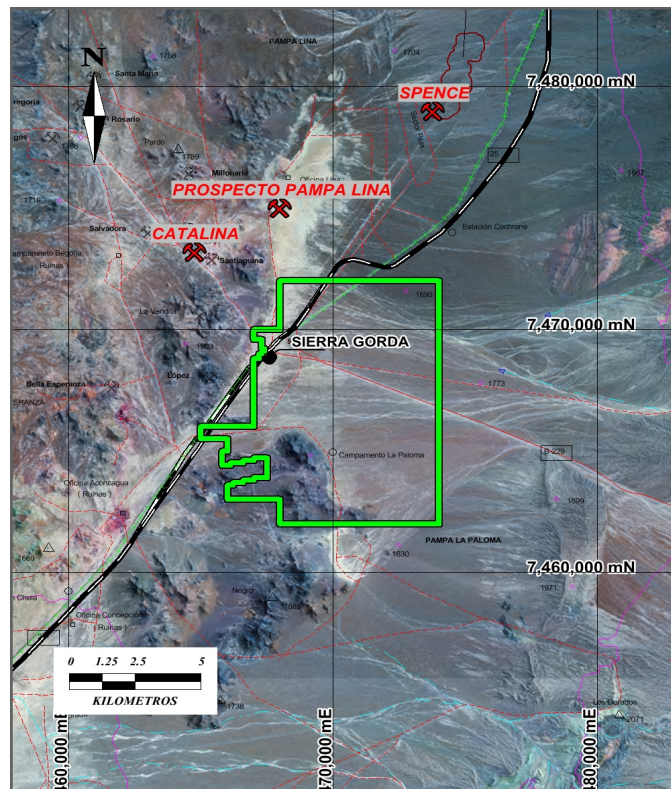
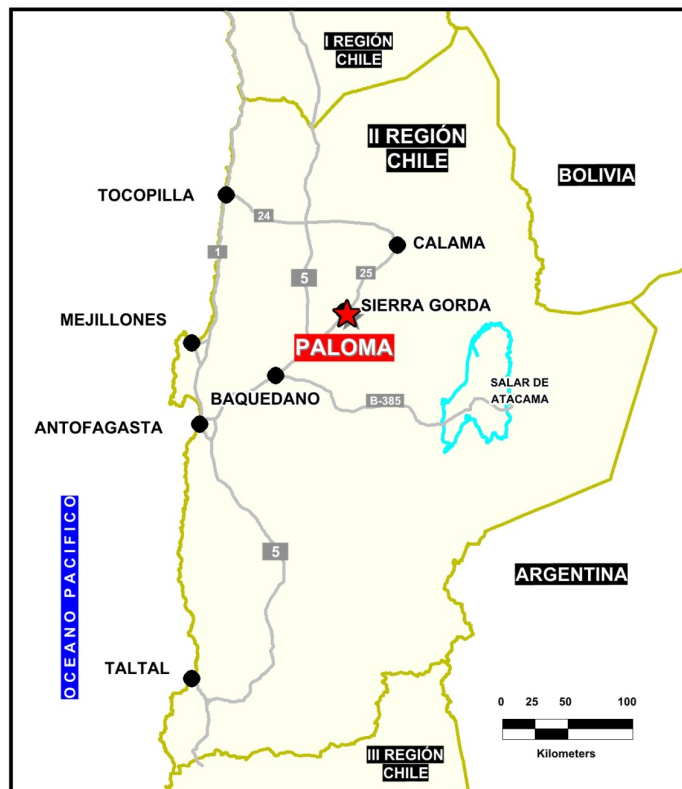
La Paloma

Basic Exploration

Prospect #41

SUMMARY

Largely gravel and caliche covered area with outcrops confirming intrusive host rocks and copper oxide mineralization in veins that also bear sulphides (chalcopyrite, sphalerite, galena and pyrite).



HIGHLIGHTS

Central Northing (UTM):	7466000
Central Easting (UTM):	471000
Elevation (masl):	1680
Metal(s):	Cu (Au)
Deposit Style:	Porphyry
Exploration Stage	Basic Exploration
Area (hectares)	6923
Nearest Project:	Spence
Historical:	Xtrata and BHP drilled

EXPLORATION WORK

Geological Mapping:	1:5000
Geochemical Samples:	123
Trenching	N/A
Channel Samples	N/A
Geophysics:	TEM, IP
RC Drill holes	12 (2344 m)
DDH Drill holes:	N/A
Total drilling :	12 (2344 m)
Other:	90% cover



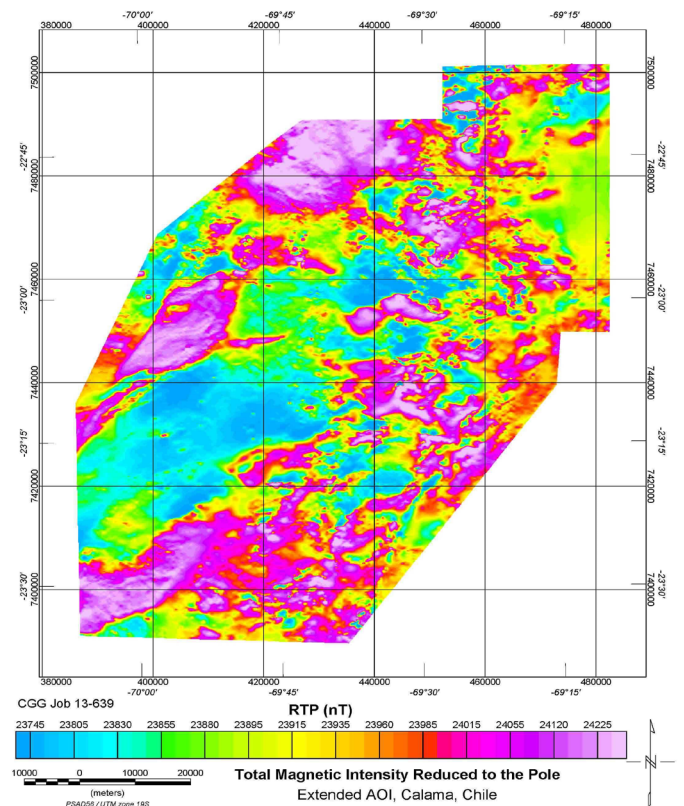
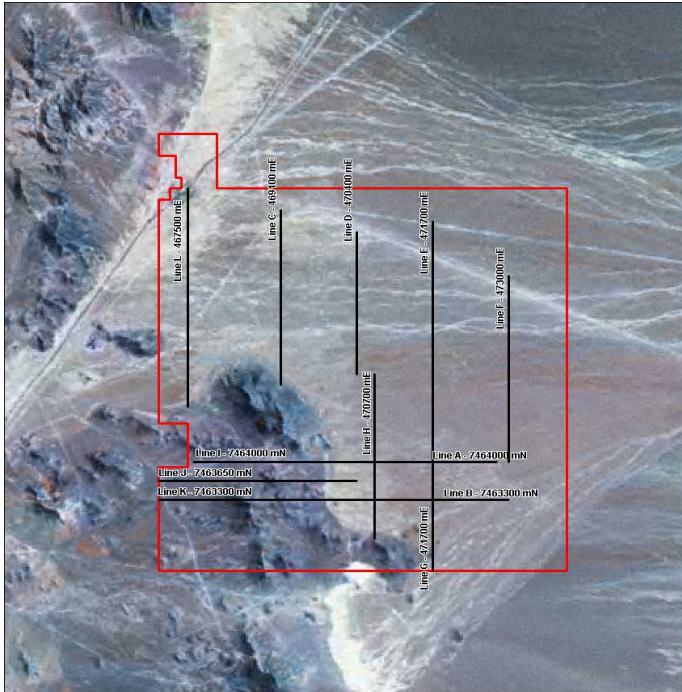


**Solutions
for human
progress**

La Paloma

Basic Exploration

Prospect #41



CONTACT DETAILS

Jose Dias Cifuentes
New Metal Business Director
jose.dias.cifuentes@sqm.com
+56 9 7465 7359

Ricardo Gonzalez Montecinos
Metal Business and Exploration Manager
ricardo.gonzalez.montecinos@sqm.com
+56 9 6320 7257

www.sqm.com

