



Solutions
for human
progress

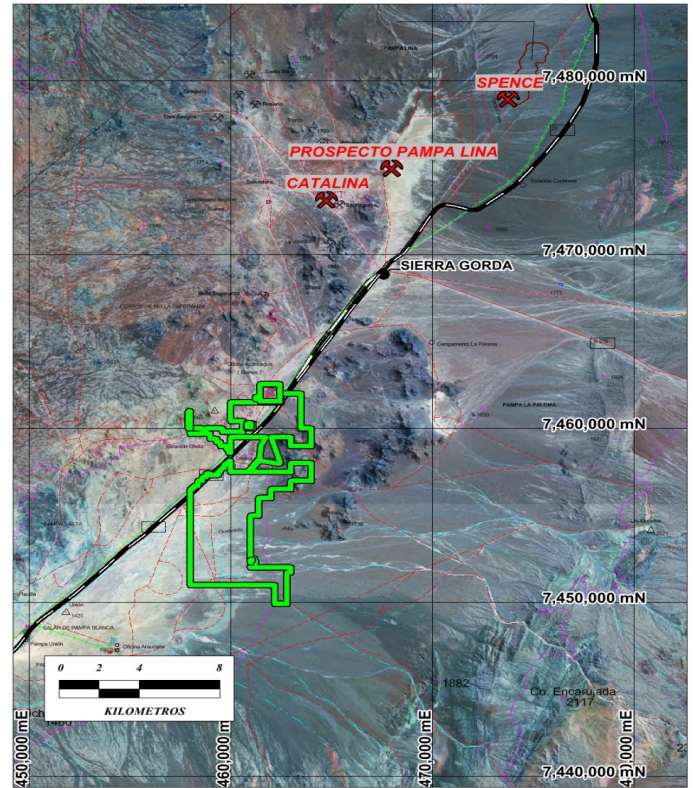
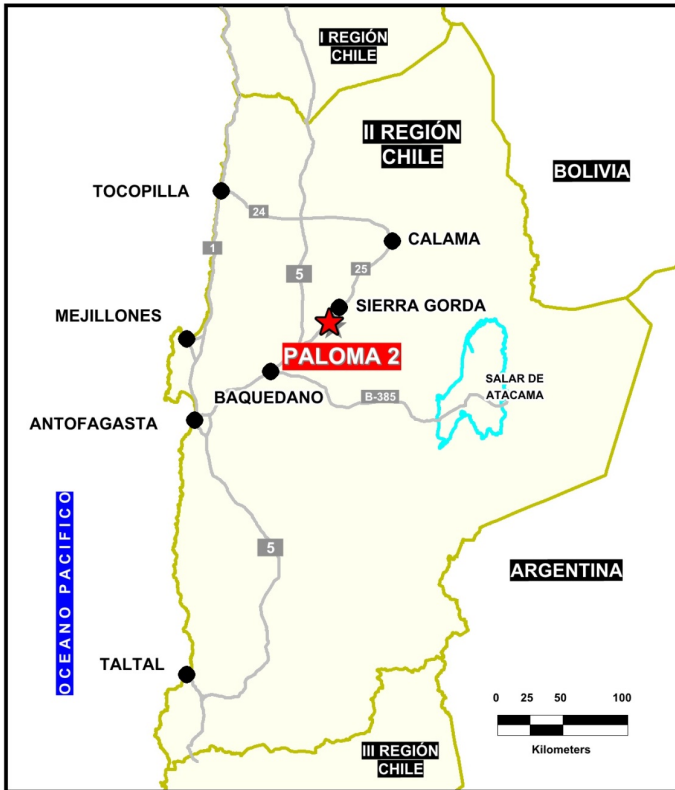
Paloma 2

Basic Exploration

Prospect #43

SUMMARY

First pass exploration in a highly prospective porphyry copper structural corridor (Antofagasta- Calama Lineament) that includes Sierra Gorda and Spence mines.



HIGHLIGHTS

Central Northing (UTM):	7455000
Central Easting (UTM):	460000
Elevation (masl):	1500
Metal(s):	Cu (Au)
Deposit Style:	Porphyry
Exploration Stage	Basic Exploration
Area (hectares)	3698
Nearest Project:	Sierra Gorda
Historical:	22 salt crust samples; Phelps Dodge

EXPLORATION WORK

Geological Mapping:	1:50000
Geochemical Samples:	N/A
Trenching	N/A
Channel Samples	N/A
Geophysics:	magnetometry and IP
RC Drill holes	1 (204 m)
DDH Drill holes:	N/A
Total drilling :	1 (204 m)
Other:	90% cover



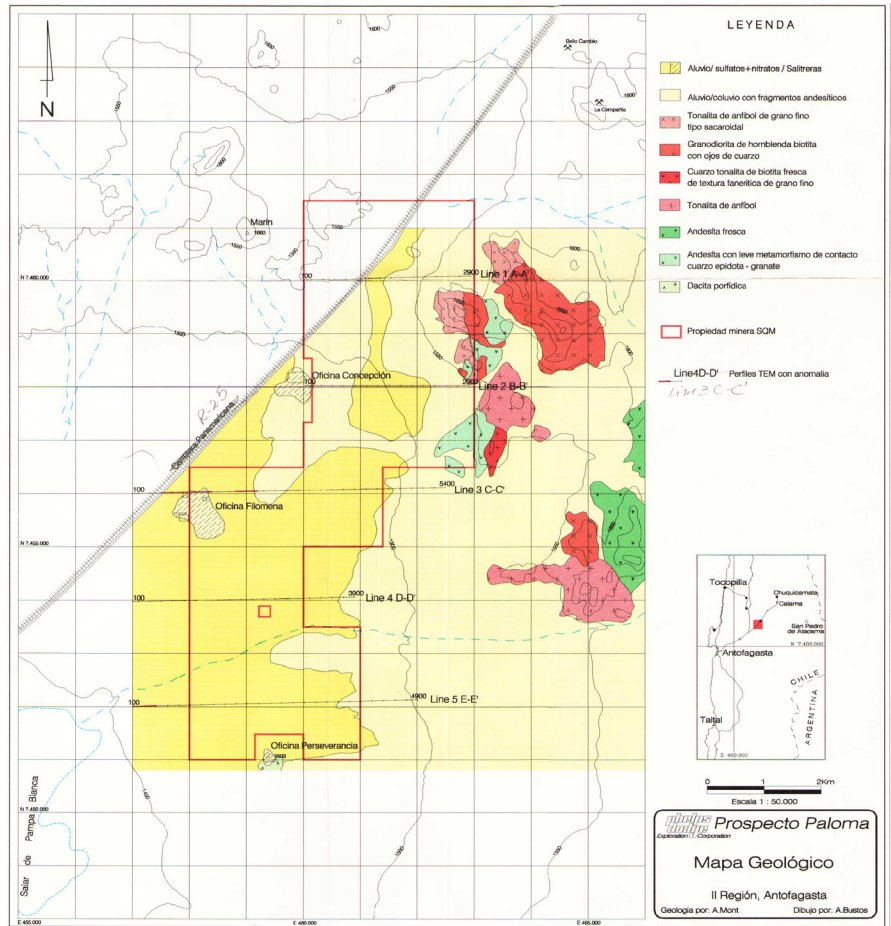
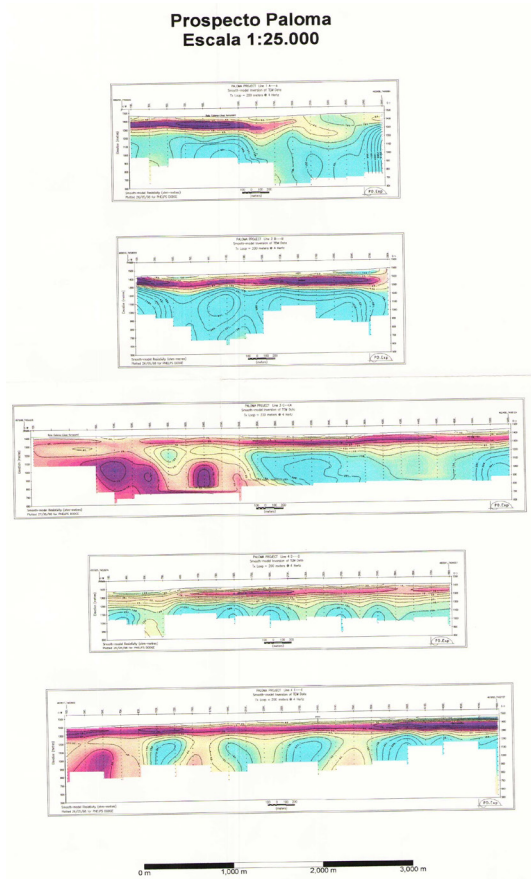


**Solutions
for human
progress**

Paloma 2

Basic Exploration

Prospect #43



D:\1010-SOQUIMICH\010-Paloma\Pa1-DWG\Paloma-Geologia.dwg Tue Feb 16 15: 55: 24 1999 Abner Bustos Z. Phelps Dodge Exploration

CONTACT DETAILS

Jose Dias Cifuentes
New Metal Business Director
jose.dias.cifuentes@sqm.com
+56 9 7465 7359

Ricardo Gonzalez Montecinos
Metal Business and Exploration Manager
ricardo.gonzalez.montecinos@sqm.com
+56 9 6320 7257

www.sqm.com

