



Solutions
for human
progress

Distrito Lenka

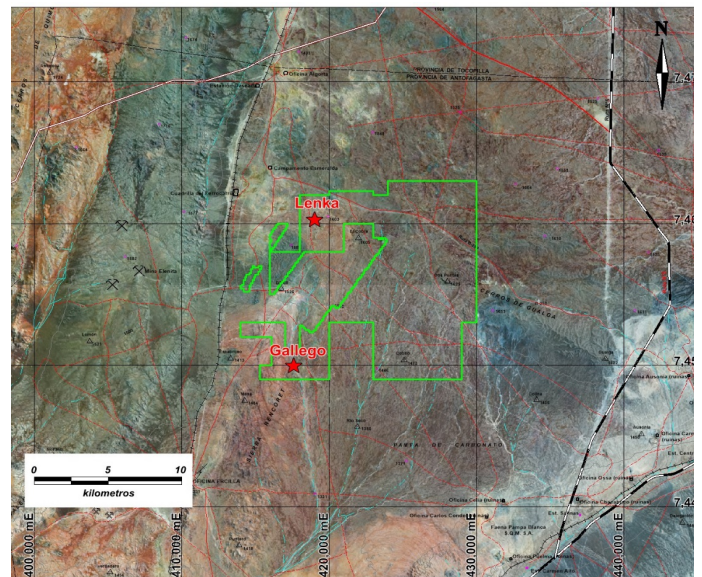
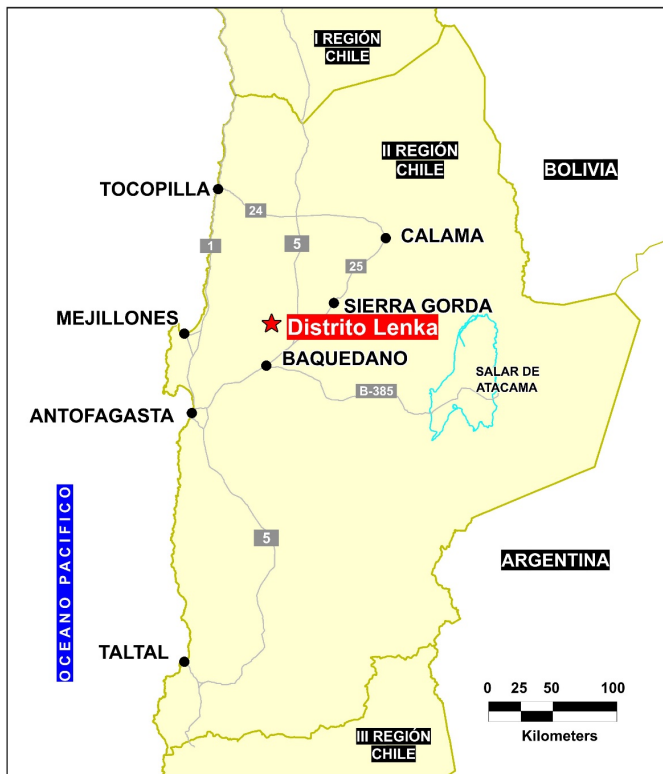
Basic Exploration

Prospect #44

SUMMARY

Lenka: XRF study shows anomalous results of up to 2.8% copper coinciding with a 2 kilometre long by 200 metre wide structural corridor.

Gallego: Anomalous copper results associated with rhyolitic domes intruding calcareous sedimentary units. Mining district known for copper oxide deposits.



HIGHLIGHTS

Central Northing (UTM):	7455000
Central Easting (UTM):	419000
Elevation (masl):	1550
Metal(s):	Cu (Au)
Deposit Style:	-
Exploration Stage	Basic Exploration
Area (hectares)	1893
Nearest Project:	Rencoret
Historical:	22 salt crust samples

EXPLORATION WORK

Geological Mapping:	1:25000
Geochemical Samples:	136
Trenching	6 (1874m)
Channel Samples	39
Geophysics:	N/A
RC Drill holes	36 (1742 m)
DDH Drill holes:	N/A
Total drilling :	36 (1742 m)
Other:	70% cover





Solutions
for human
progress

Distrito Lenka

Basic Exploration

Prospect #44

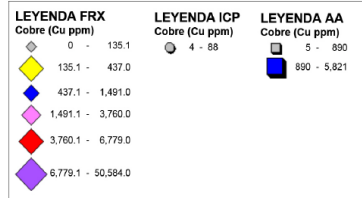
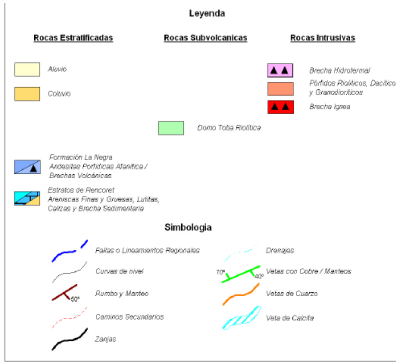
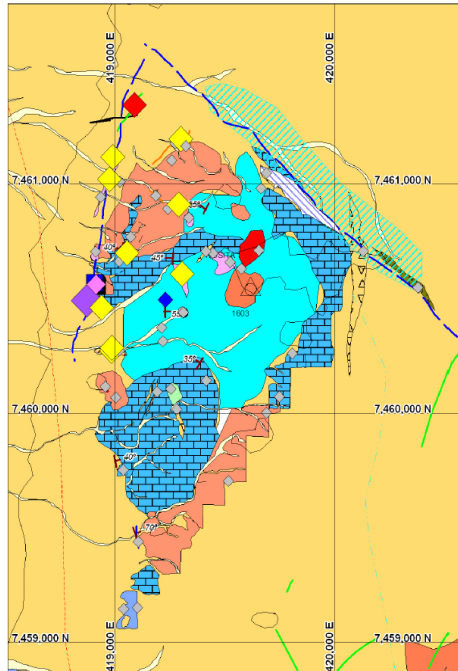


Fig. 8 - Concentraciones de CuT Sector Lenka

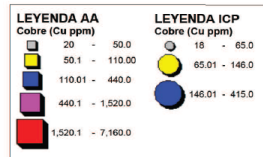
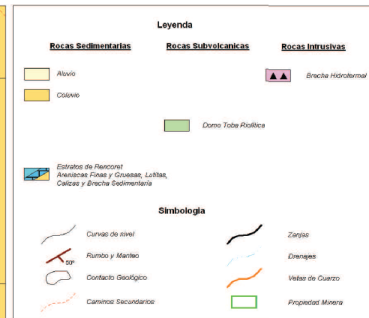
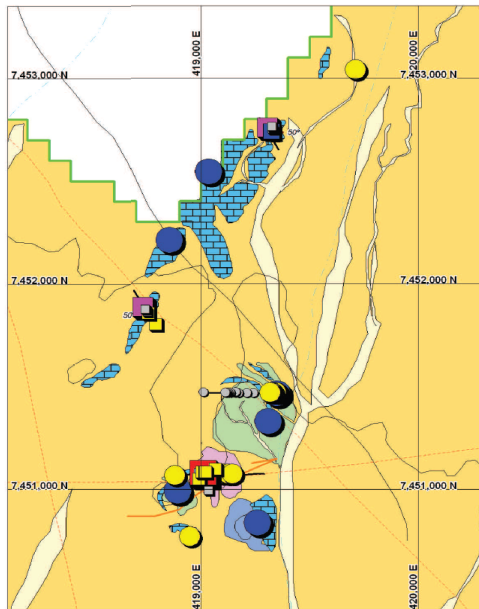
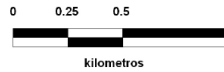
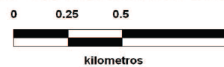


Fig. 4 - Concentraciones de CuT Sector Gallego



CONTACT
DETAILS

Jose Dias Cifuentes
New Metal Business Director
jose.dias.cifuentes@sqm.com
+56 9 7465 7359

Ricardo Gonzalez Montecinos
Metal Business and Exploration Manager
ricardo.gonzalez.montecinos@sqm.com
+56 9 6320 7257

www.sqm.com

