

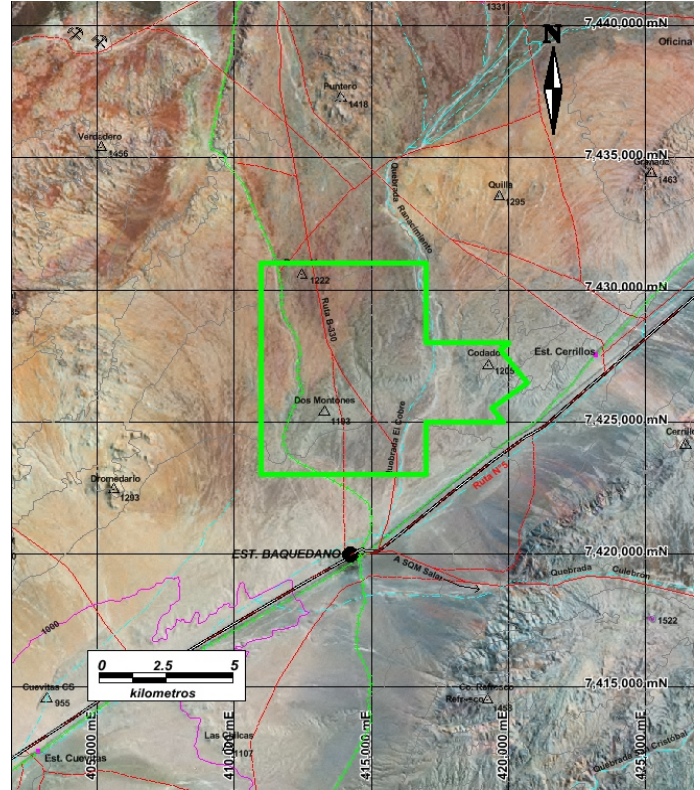
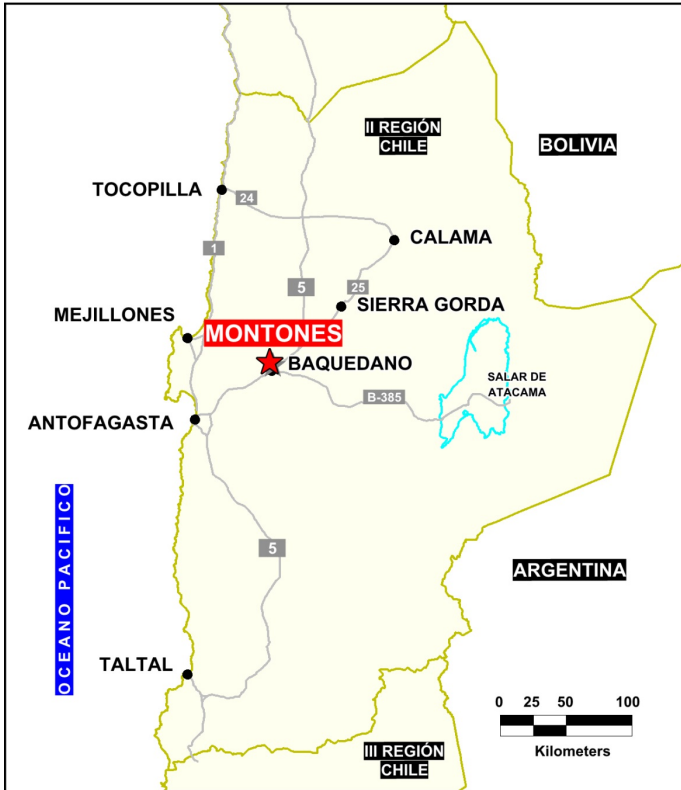


Solutions
for human
progress

Montones
Generative Exploration
Prospect #53

SUMMARY

100% covered aeromagnetic - radiometric target along the Antofagasta-Calama lineament east of the Mantos Blancos copper mine.



HIGHLIGHTS

Central Northing (UTM):	7427000
Central Easting (UTM):	414500
Elevation (masl):	1200
Metal(s):	Cu
Deposit Style:	porphyry
Exploration Stage	Generative Exploration
Area (hectares)	5706
Nearest Project:	-
Historical:	12 salt crust drill holes

EXPLORATION WORK

Geological Mapping:	N/A
Geochemical Samples:	9
Trenching	N/A
Channel Samples	N/A
Geophysics:	airborne mag
RC Drill holes	N/A
DDH Drill holes:	N/A
Total drilling :	N/A
Other:	radiometric, aster

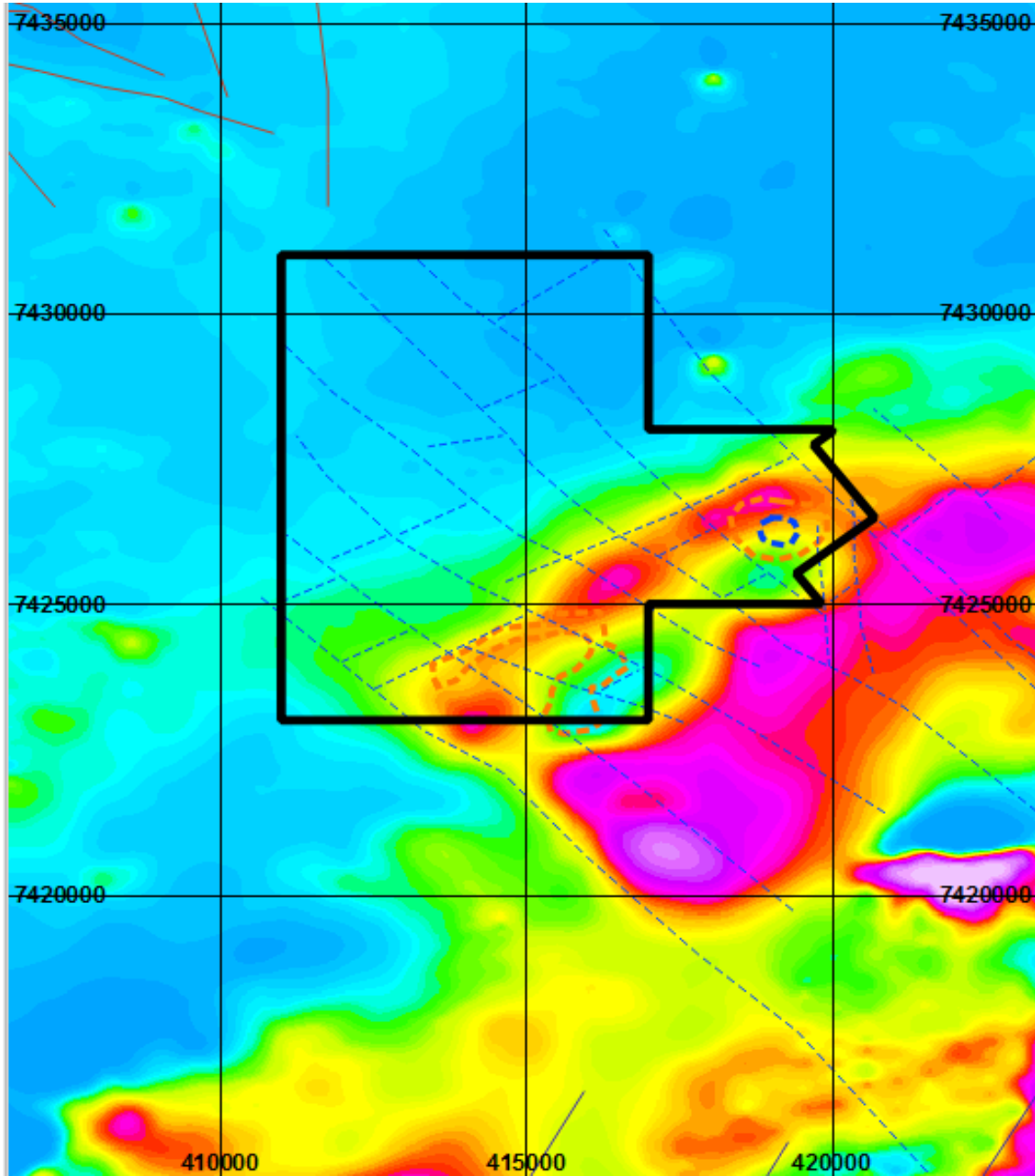




Solutions
for human
progress

Montones

Generative Exploration
Prospect #53



CONTACT DETAILS

Jose Dias Cifuentes
New Metal Business Director
jose.dias.cifuentes@sqm.com
+56 9 7465 7359

Ricardo Gonzalez Montecinos
Metal Business and Exploration Manager
ricardo.gonzalez.montecinos@sqm.com
+56 9 6320 7257

www.sqm.com

