



Solutions  
for human  
progress

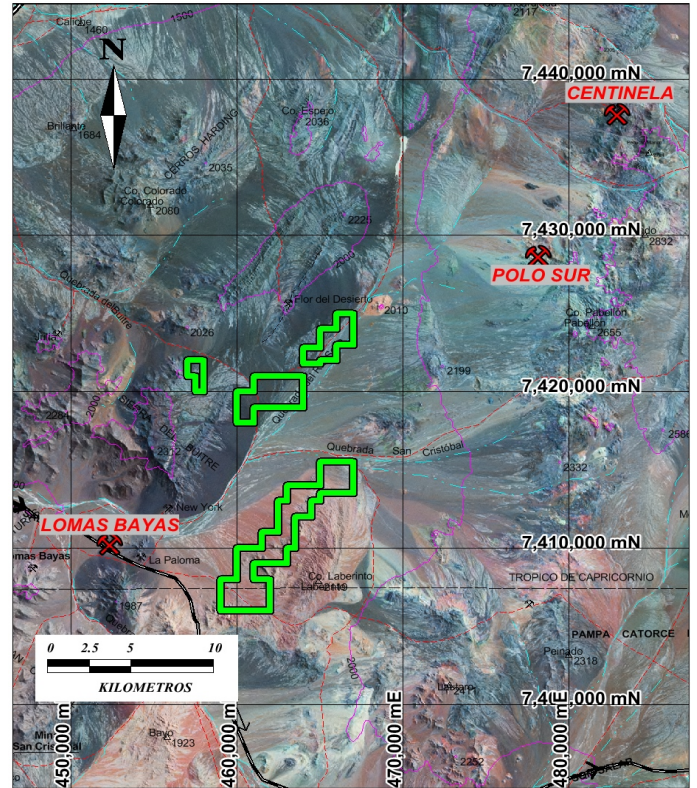
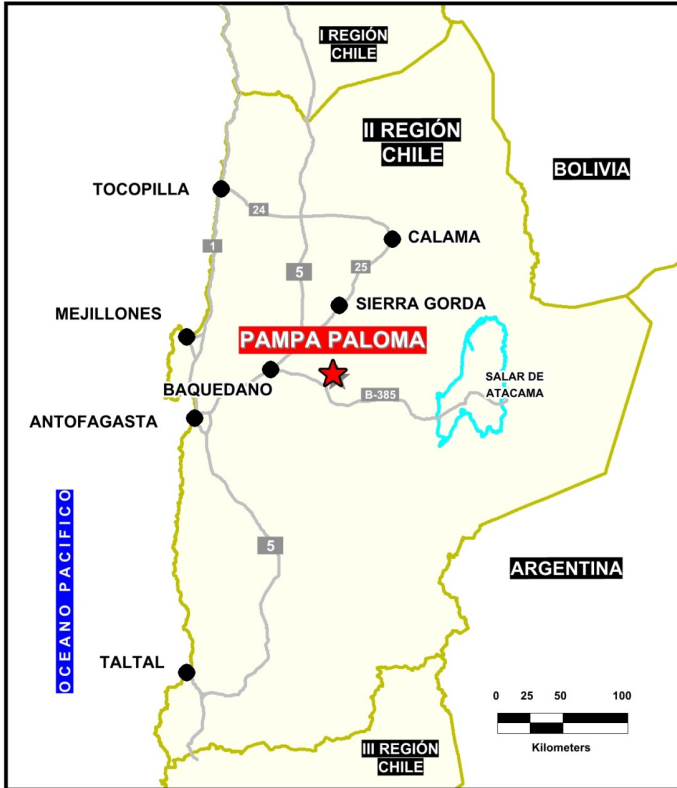
# Pampa Paloma

Generative Exploration

Prospect #56

## SUMMARY

Greenfields area east of the Lomas Bayas Mine and south of Polo Sur and Centinela mines in the Paleocene copper belt.



## HIGHLIGHTS

Central Northing (UTM):	7413000
Central Easting (UTM):	461500
Elevation (masl):	1780
Metal(s):	Cu (Au)
Deposit Style:	Porphyry
Exploration Stage	Generative Exploration
Area (hectares)	3477
Nearest Project:	Polo Sur, Lomas Bayas
Historical:	BHP: Project Karim 15 salt crust samples

## EXPLORATION WORK

Geological Mapping:	1:50000
Geochemical Samples:	74
Trenching	N/A
Channel Samples	N/A
Geophysics:	airborne mag
RC Drill holes	N/A
DDH Drill holes:	N/A
Total drilling :	N/A
Other:	70% cover



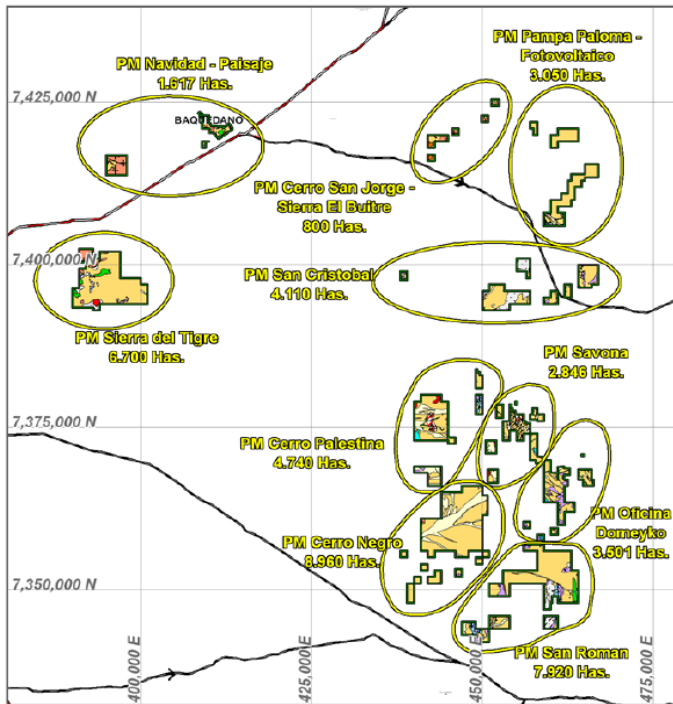
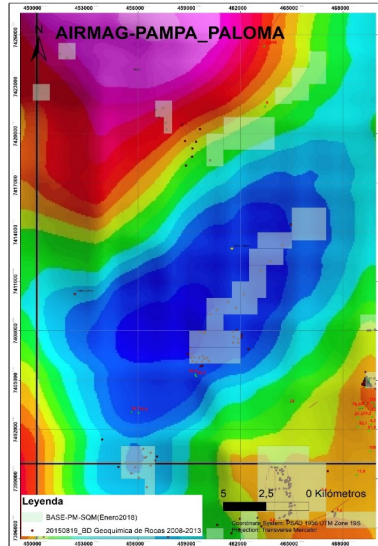


Solutions  
for human  
progress

# Pampa Paloma

Generative Exploration

Prospect #56



## AREA DE INTERES BAQUEDANO

### SECTOR DE INTERÉS PALESTINA

Proyecto Metalico  
GEDM - SQM

#### LEYENDA

##### Rocas Estratificadas

- Aluvios
- Coluvio
- Ignimbrita, Tobas
- Vidrio Volcanico
- Aglomerados
- Andesitas Vesiculares y Amigdaloidales (Kr)
- Andesitas Porfídicas (Kr)
- Calizas y Areniscas de la Formación Sierra del Cobre (Jr)
- Areniscas Foliadas (Pz)

##### Rocas Intrusivas

- Roca Alterada
- Riolitas con Ojos de Cuarzo, Dioritas y Latitas (Ti)
- Dioritas (Jr)
- Granodioritas (Jr)
- Roca Indiferenciada

#### SIMBOLOGÍA

- Fallas
- Drenajes
- Propiedad Minera
- Curvas de Nivel
- Veta con Oxidos de Cobre
- Dique
- Carretera
- Huella

## CONTACT DETAILS

Jose Dias Cifuentes  
New Metal Business Director  
jose.dias.cifuentes@sqm.com  
+56 9 7465 7359

Ricardo Gonzalez Montecinos  
Metal Business and Exploration Manager  
ricardo.gonzalez.montecinos@sqm.com  
+56 9 6320 7257

[www.sqm.com](http://www.sqm.com)

