



**Solutions
for human
progress**

Montevideo

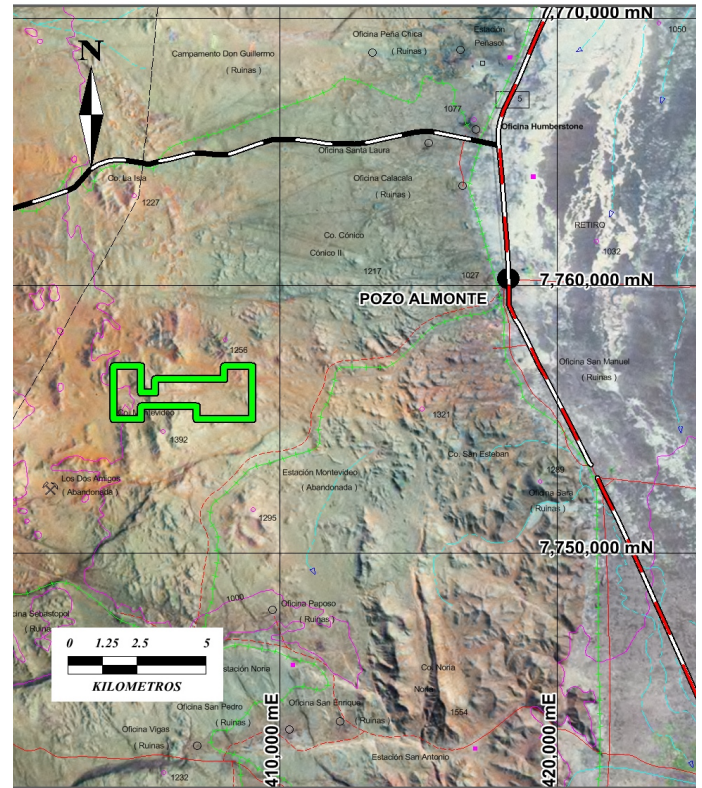
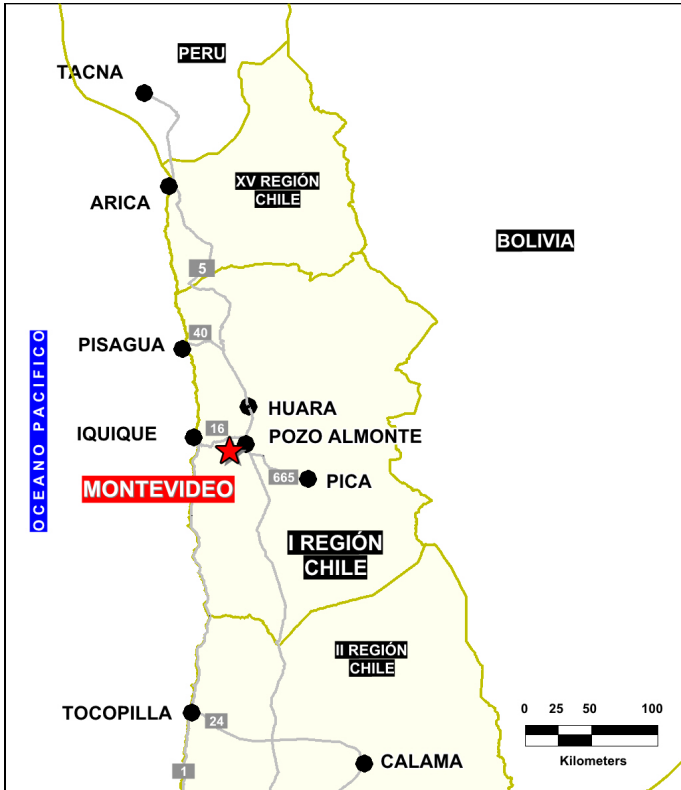
Generative Exploration

Prospect #6

SUMMARY

Small working on east-west trending vein with samples ranging between 0.6% Cu and 1.1% Cu with 29% to 51% Fe and 0.2 g/t to 0.3 g/t Au.

Workings located near the contact of calcareous sedimentary units and limestones with a granodioritic porphyry intrusive.



HIGHLIGHTS

Central Northing (UTM):	7755500
Central Easting (UTM):	406700
Elevation (masl):	1100
Metal(s):	Cu (Fe, Au)
Deposit Style:	IOCG
Exploration Stage	Generative Exploration
Area (hectares)	724
Nearest Project:	-
Historical:	Surface vein systems, 1 RC drillhole

EXPLORATION WORK

Geological Mapping:	1:25000
Geochemical Samples:	14
Trenching	N/A
Channel Samples	N/A
Geophysics:	N/A
RC Drill holes	N/A
DDH Drill holes:	N/A
Total drilling:	N/A
Other:	Geochemical and geological work program (2020)



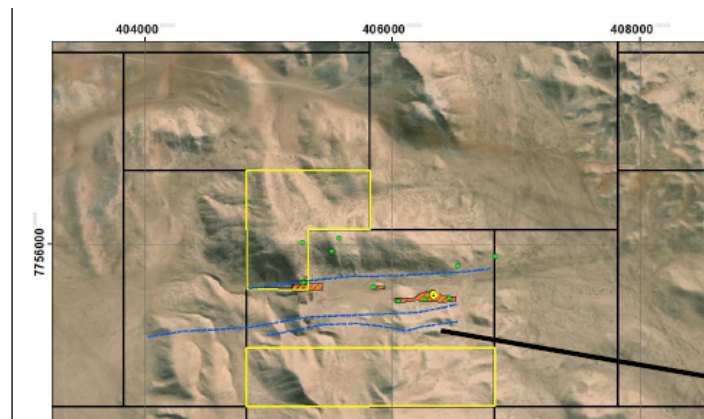
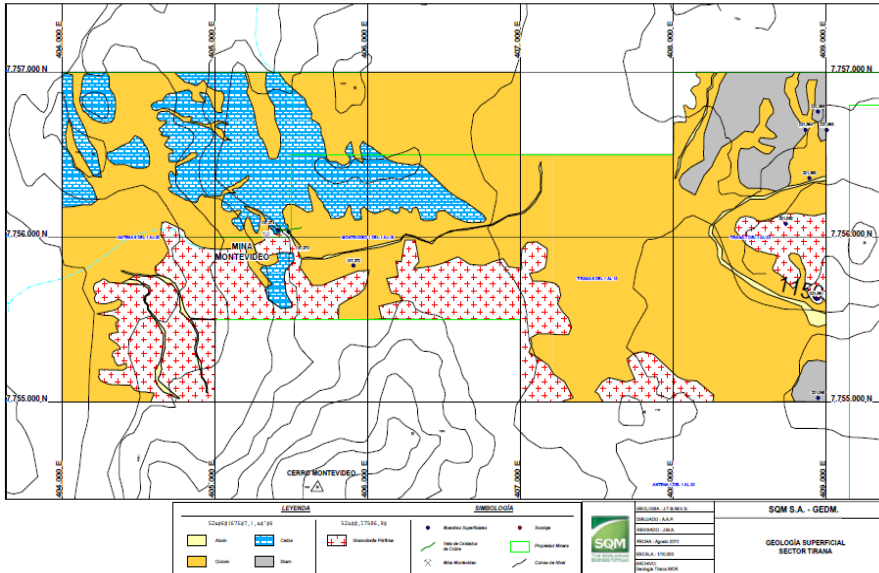


Solutions
for human
progress

Montevideo

Generative Exploration

Prospect #6



-1.5km de zona mineralizada x200m de ancho, abierto en profundidad y en sus extensiones

-Altas leyes en Fe

-Mineralización: Magnetita, especularita, ox-Cu

Muestra	Au g/t	Ag ppm	Cu ppm	Fe %	Mn ppm	Mo ppm	Pb ppm	S %	Zn ppm
138143	<0.01	2.2	133	19.68	1577	11	36	0.52	43
138144	<0.01	3.9	692	30.26	173	38	92	0.55	39
138145	0.02	3	1309	29.12	422	17	59	2.69	39
138146	<0.01	4.1	56	30.64	198	30	110	0.97	42
138147	0.02	1.7	846	14.7	596	11	-20	3.42	29



CONTACT DETAILS

Jose Dias Cifuentes
New Metal Business Director
jose.dias.cifuentes@sqm.com
+56 9 7465 7359

Ricardo Gonzalez Montecinos
Metal Business and Exploration Manager
ricardo.gonzalez.montecinos@sqm.com
+56 9 6320 7257

www.sqm.com

