



Solutions
for human
progress

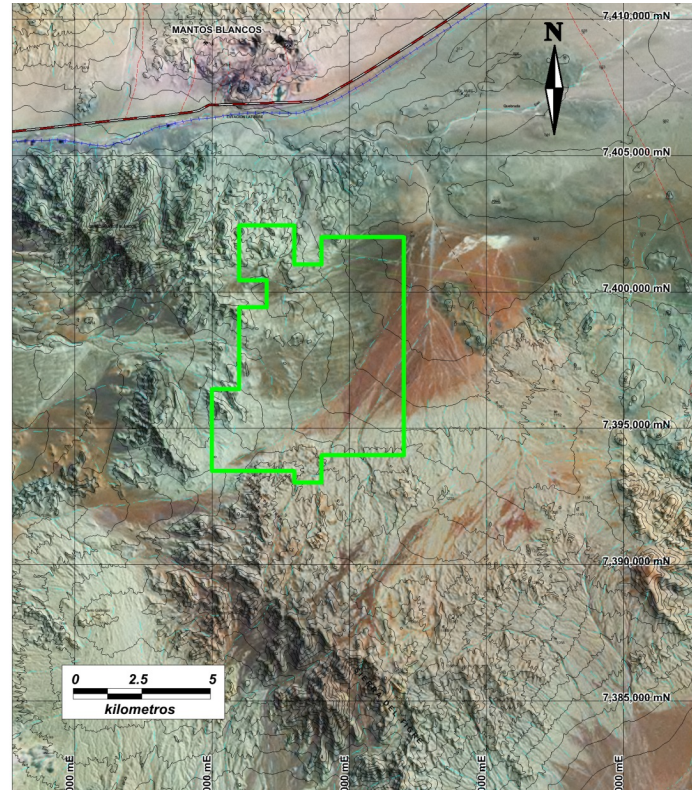
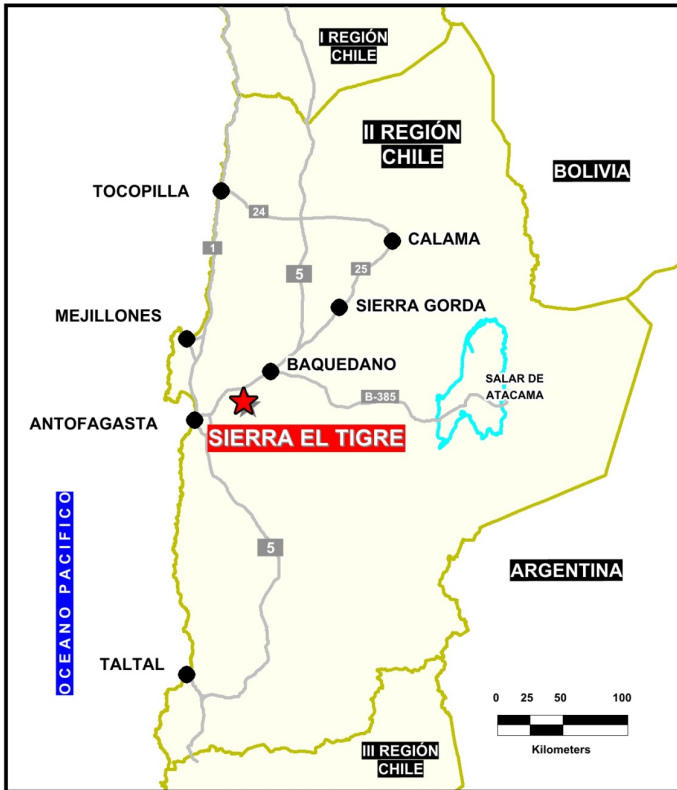
Sierra El Tigre

Basic Exploration

Prospect #62

SUMMARY

South of the Mantos Blancos Mine with anomalous copper in soil samples and visible cuprite over chalcocite in vesicles of the volcanic host rock.



HIGHLIGHTS

Central Northing (UTM):	7397000
Central Easting (UTM):	395000
Elevation (masl):	1100
Metal(s):	Cu
Deposit Style:	Manto style
Exploration Stage	Basic Exploration
Area (hectares)	6700
Nearest Project:	Mantos Blancos
Historical:	58 salt crust samples

EXPLORATION WORK

Geological Mapping:	1:50000
Geochemical Samples:	35
Trenching	N/A
Channel Samples	N/A
Geophysics:	N/A
RC Drill holes	N/A
DDH Drill holes:	N/A
Total drilling :	N/A
Other:	80% cover, 18 geochemical drills (~10 m each)



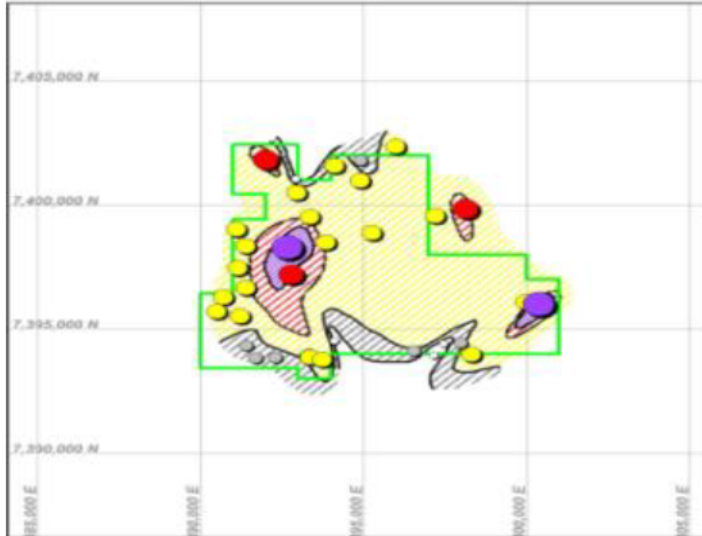


Solutions
for human
progress

Sierra El Tigre

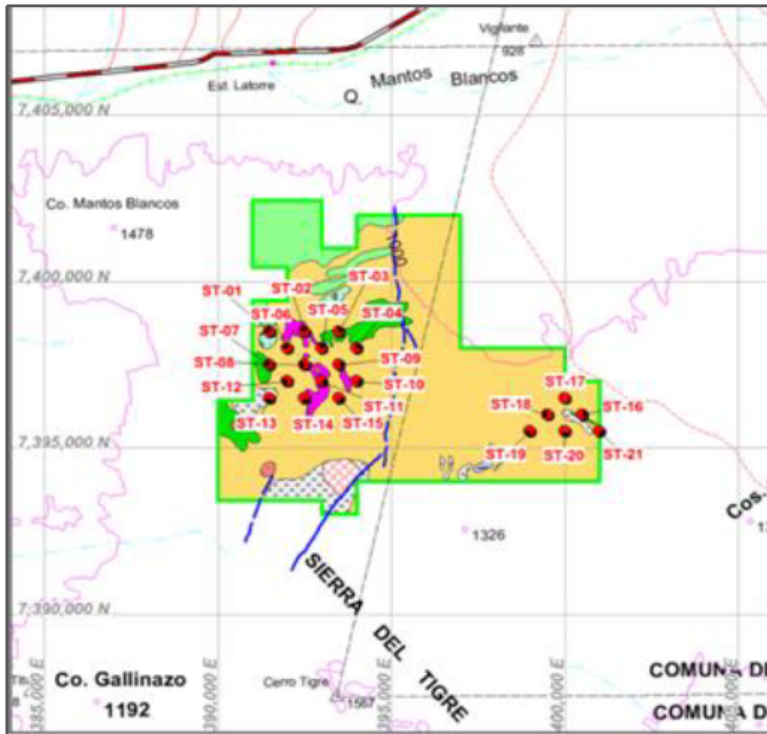
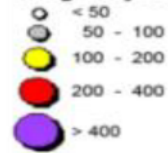
Basic Exploration

Prospect #62



Sierra El Tigre Sector Estación Palestina Distribución del Cobre

Rango Leyes FRX Cu ppm



Sierra El Tigre Pozos WD Recomendados

Legenda



Simbología



CONTACT DETAILS

Jose Dias Cifuentes
New Metal Business Director
jose.dias.cifuentes@sqm.com
+56 9 7465 7359

Ricardo Gonzalez Montecinos
Metal Business and Exploration Manager
ricardo.gonzalez.montecinos@sqm.com
+56 9 6320 7257

www.sqm.com

