



**Solutions
for human
progress**

Distrito El Cobre

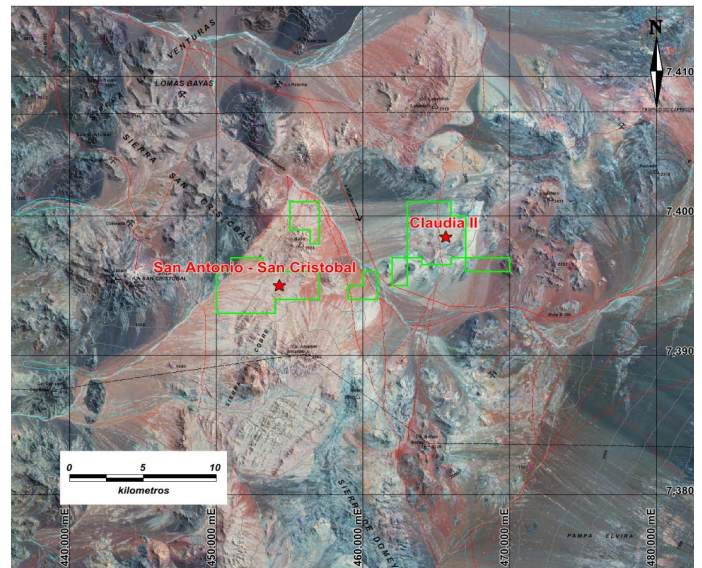
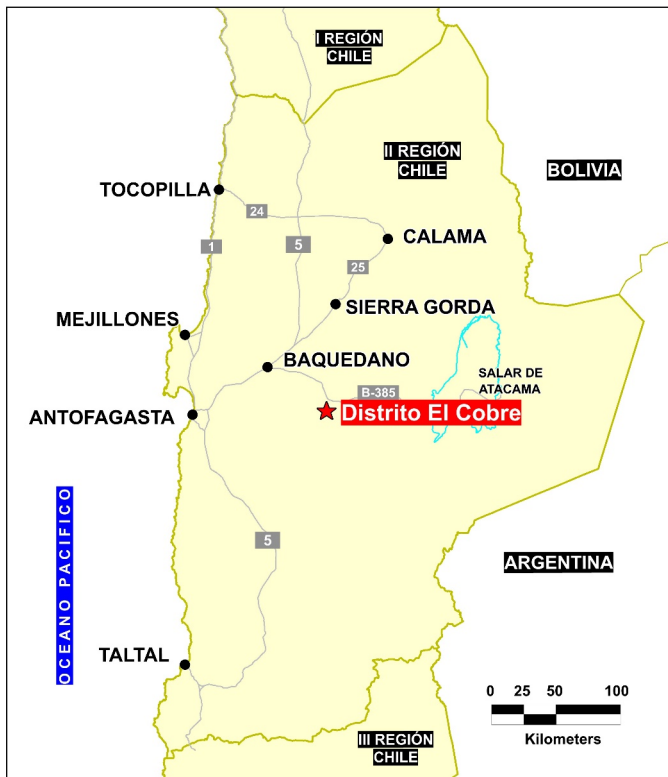
Generative Exploration

Prospect #64

SUMMARY

San Antonio-San Cristobal: Rhyolite domes intruding volcano-sedimentary sequence in the Paleocene metallogenic belt

Claudia II: Limited dacitic flows with pyroclastic horizons appear intruded by dikes of similar composition, probably Paleocene -Eocene in age.



HIGHLIGHTS

Central Northing (UTM):	7397000
Central Easting (UTM):	460000
Elevation (masl):	1700
Metal(s):	Cu, (Ag, Au)
Deposit Style:	Porphyry (epithermal)
Exploration Stage	Generative Exploration
Area (hectares)	5191
Nearest Project:	Lomas Bayas
Historical:	20 salt crust samples

EXPLORATION WORK

Geological Mapping:	1:50000
Geochemical Samples:	79
Trenching	N/A
Channel Samples	N/A
Geophysics:	N/A
RC Drill holes	N/A
DDH Drill holes:	N/A
Total drilling :	N/A
Other:	85% cover



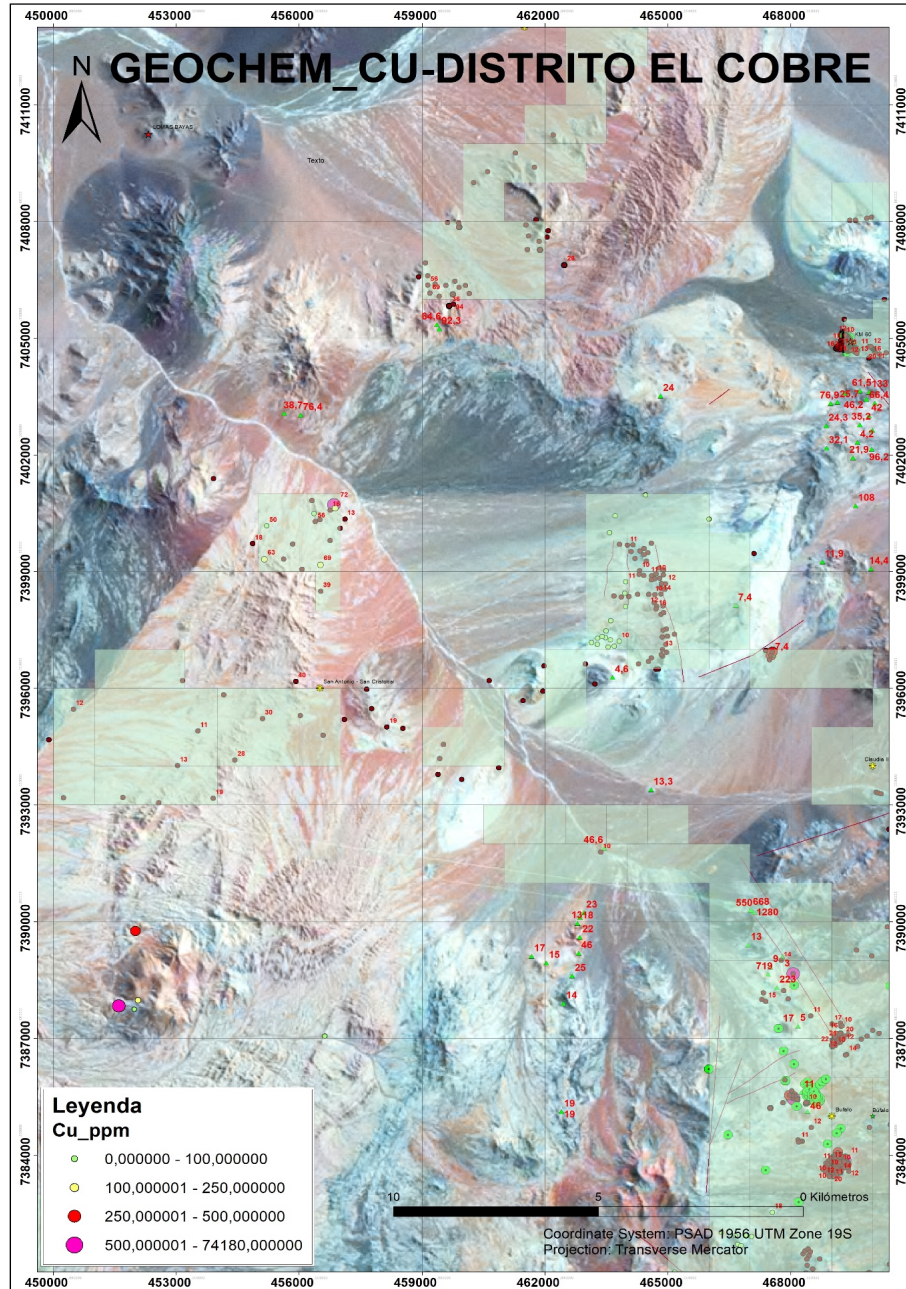


Solutions
for human
progress

Distrito El Cobre

Generative Exploration

Prospect #64



CONTACT DETAILS

Jose Dias Cifuentes
New Metal Business Director
jose.dias.cifuentes@sqm.com
+56 9 7465 7359

Ricardo Gonzalez Montecinos
Metal Business and Exploration Manager
ricardo.gonzalez.montecinos@sqm.com
+56 9 6320 7257

www.sqm.com

