



**Solutions
for human
progress**

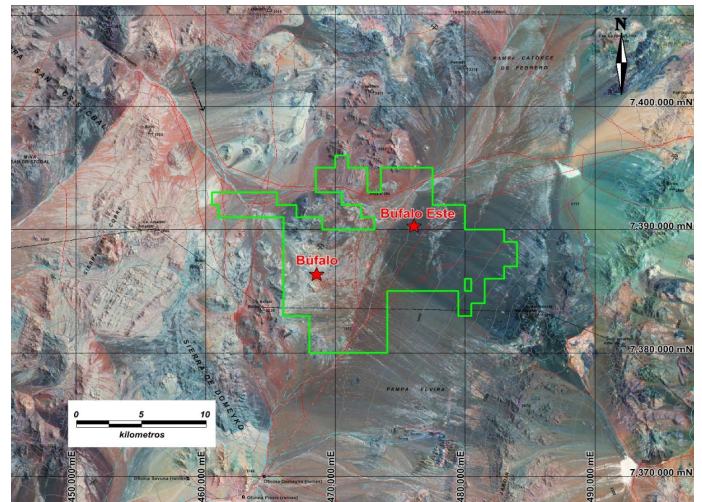
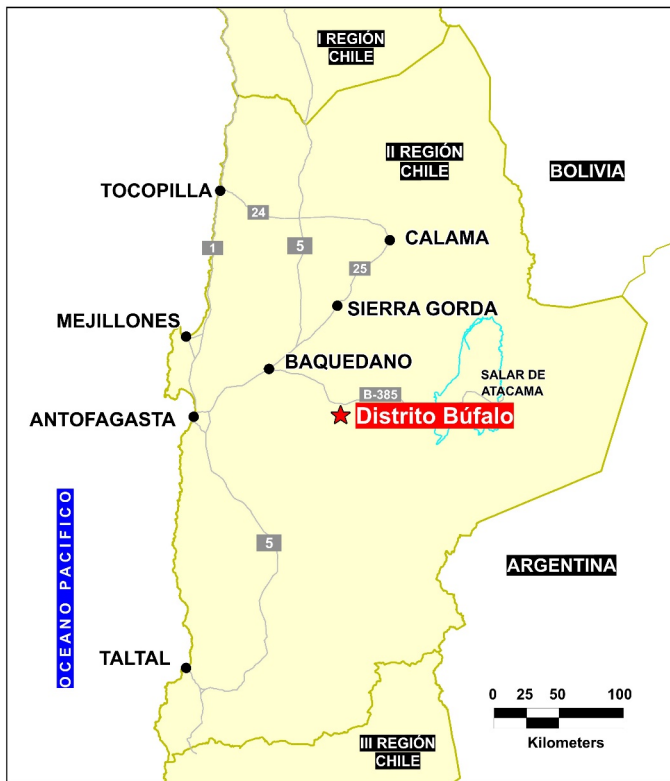
Distrito Bufalo

Advanced Exploration

Prospect #66

SUMMARY

Bufalo is associated with an erosional remnant of an advanced argillic lithocap representing the upper parts of a porphyry copper system
Bufalo Este: 95% covered prospect within the Eoceno-Oligoceno copper belt and Domeyko fault system west of the Gaby copper mine.



HIGHLIGHTS

Central Northing (UTM):	7387500
Central Easting (UTM):	472000
Elevation (masl):	2000
Metal(s):	Cu (Au)
Deposit Style:	Porphyry
Exploration Stage	Advanced Exploration
Area (hectares)	17327
Nearest Project:	Lomas Bayas
Historical:	16 salt crust samples

EXPLORATION WORK

Geological Mapping:	1:10000
Geochemical Samples:	122
Trenching	12 (3.5 km)
Channel Samples	N/A
Geophysics:	ground mag & IP
RC Drill holes	41 (5296 m)
DDH Drill holes:	1 (1215 m)
Total drilling :	42 (17161 m)
Other:	Scheduled work program by SQM 2020



