

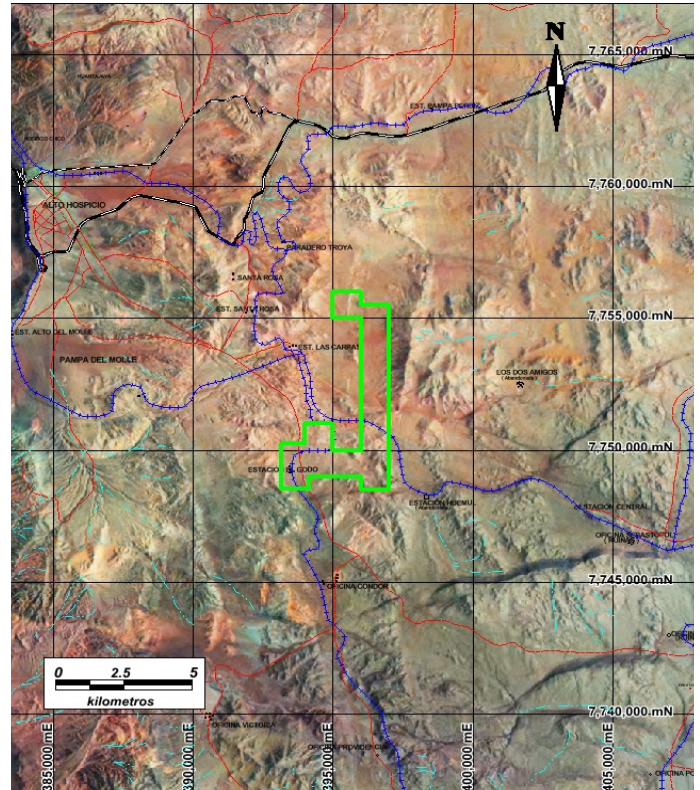
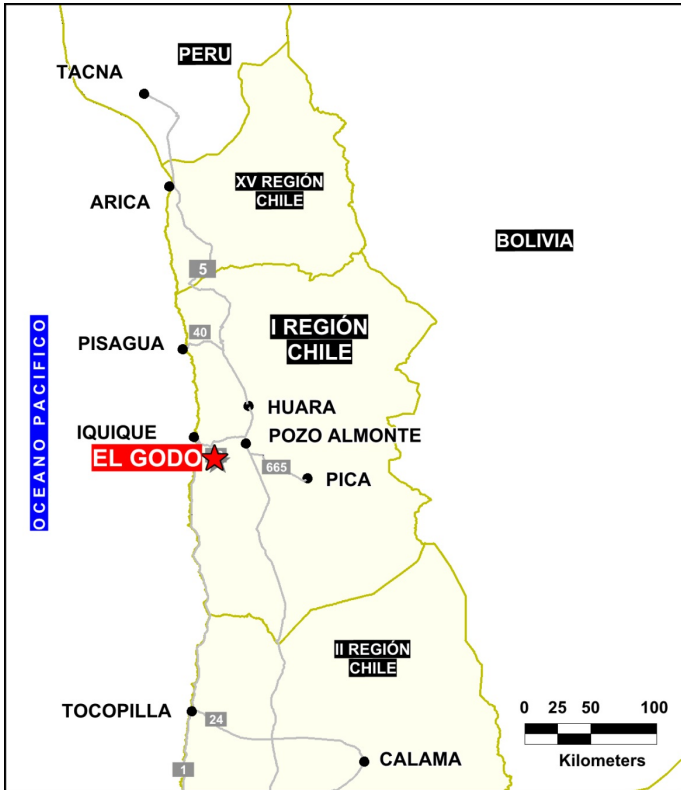


Solutions  
for human  
progress

**El Godo**  
Generative Exploration  
Prospect #7

## SUMMARY

Potential new mineralization district. Anomalous copper and molybdenum values in chip samples from skarn / calcareous units from windows in gravels (cover).



## HIGHLIGHTS

Central Northing (UTM):	7750700
Central Easting (UTM):	396400
Elevation (masl):	1010
Metal(s):	Cu, Au
Deposit Style:	skarn
Exploration Stage	Generative Exploration
Area (hectares)	1251
Nearest Project:	New potential district
Historical:	14 salt crust drillholes

## EXPLORATION WORK

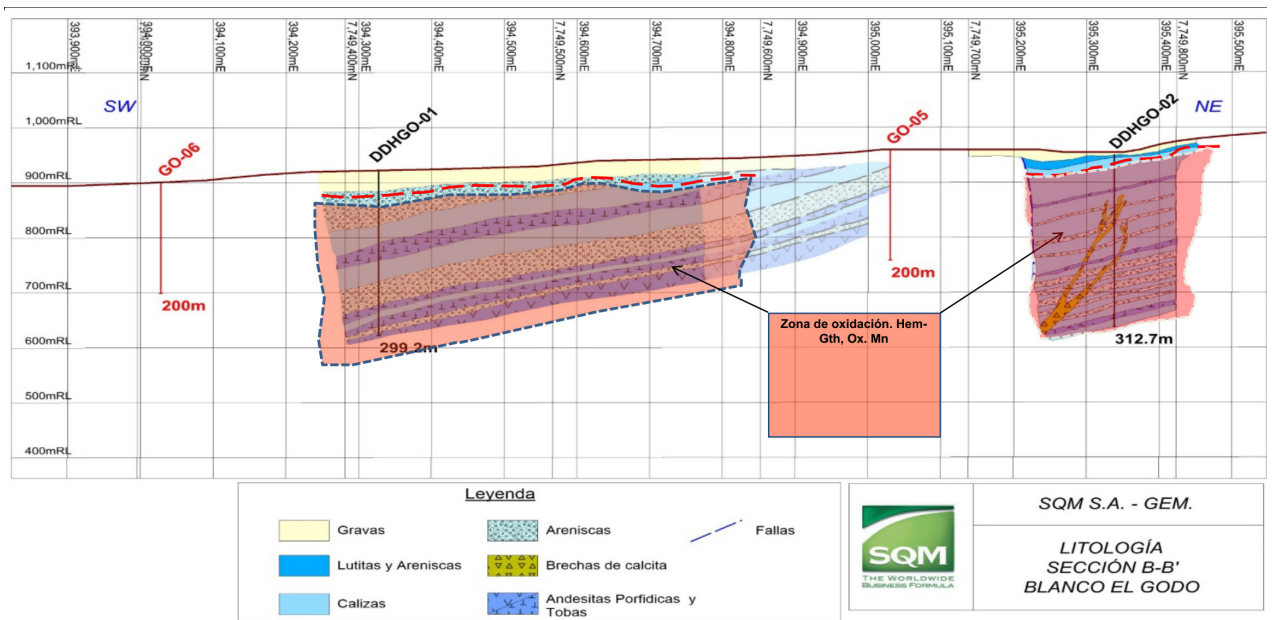
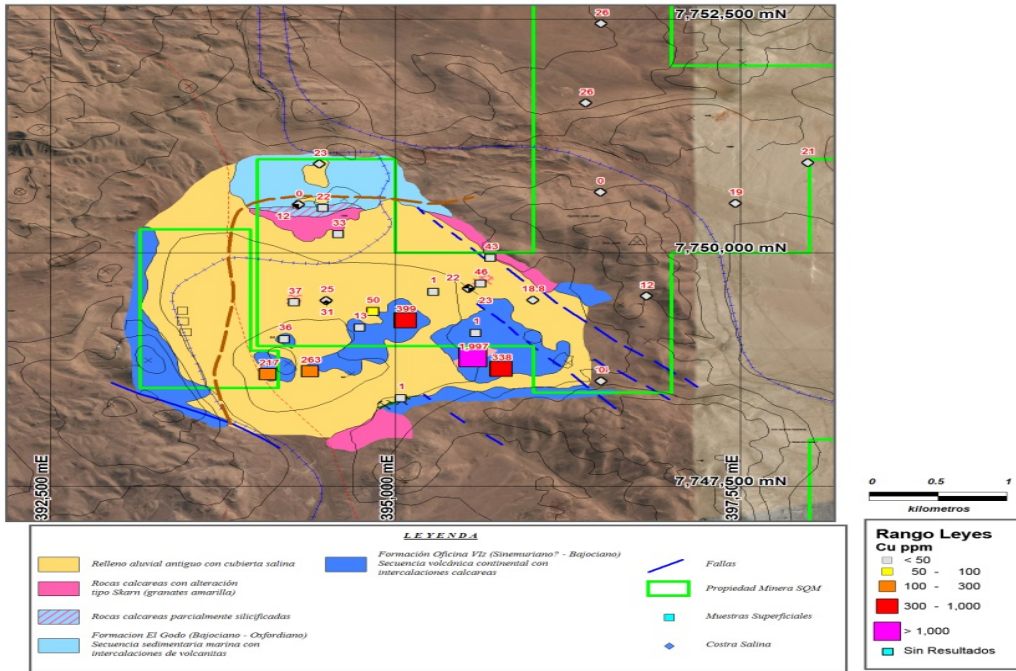
Geological Mapping:	1:25000
Geochemical Samples:	12
Trenching	N/A
Channel Samples	N/A
Geophysics:	N/A
RC Drill holes	5 (876 m)
DDH Drill holes:	2 (612 m)
Total drilling :	7 (1488 m)
Other:	Geochemical and geological work program (2020)





Solutions  
for human  
progress

El Godo  
Generative Exploration  
Prospect #7



CONTACT  
DETAILS

Jose Dias Cifuentes  
New Metal Business Director  
jose.dias.cifuentes@sqm.com  
+56 9 7465 7359

Ricardo Gonzalez Montecinos  
Metal Business and Exploration Manager  
ricardo.gonzalez.montecinos@sqm.com  
+56 9 6320 7257

[www.sqm.com](http://www.sqm.com)

