



Solutions  
for human  
progress

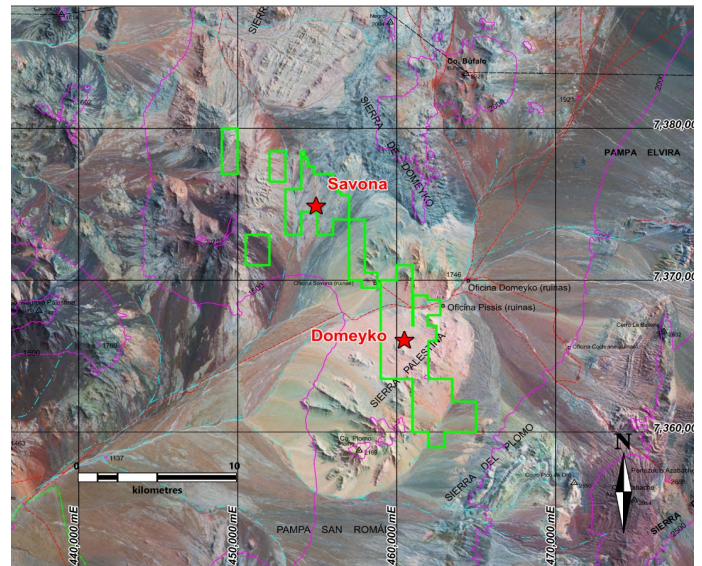
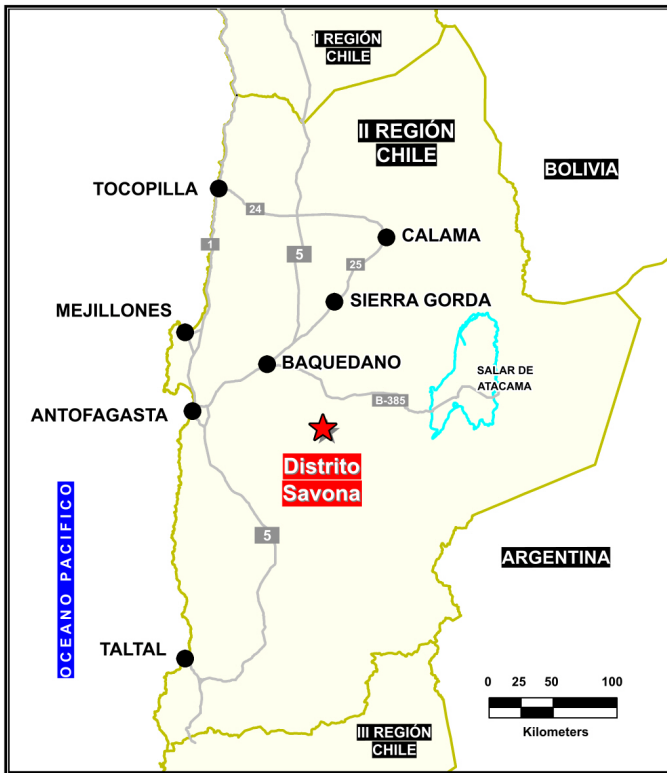
# Distrito Savona

Generative Exploration

Prospect #70

## SUMMARY

Savona: Anomalous copper (200-600 ppm) and molybdenum (20-160 ppm) in a 2 km by 0.5 km leached zone associated with regional N-S structure and limonitic stockwork.  
Domeyko: Green fields area within the Paleocene copper belt



## HIGHLIGHTS

Central Northing (UTM):	7370000
Central Easting (UTM):	457500
Elevation (masl):	1700
Metal(s):	Cu
Deposit Style:	Porphyry
Exploration Stage	Generative Exploration
Area (hectares)	6808
Nearest Project:	Lomas Bayas
Historical:	34 salt crust samples; 3rd party drill

## EXPLORATION WORK

Geological Mapping:	1:50000
Geochemical Samples:	123
Trenching	N/A
Channel Samples	N/A
Geophysics:	airborne mag
RC Drill holes	1 (300 m)
DDH Drill holes:	N/A
Total drilling :	1 (300 m)
Other:	80% cover



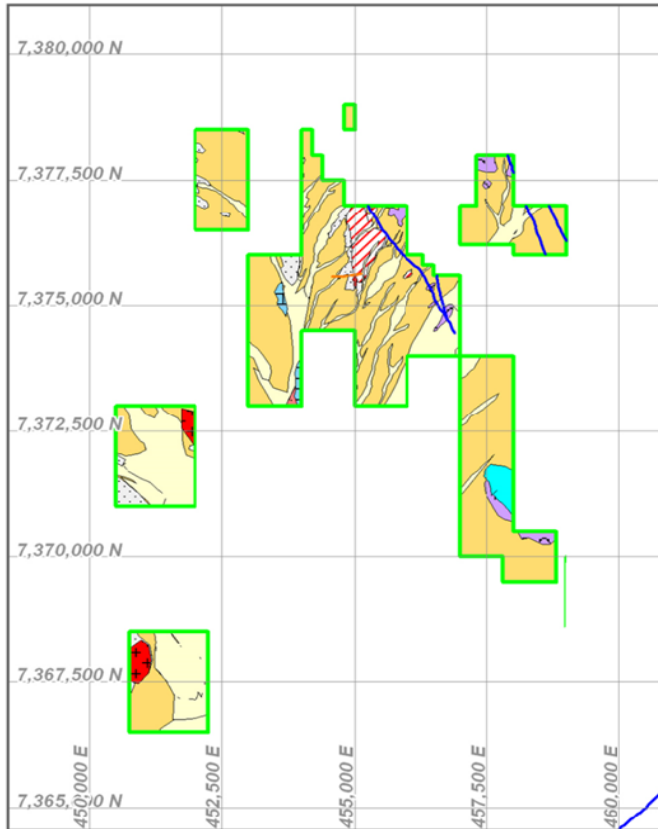


Solutions  
for human  
progress

# Distrito Savona

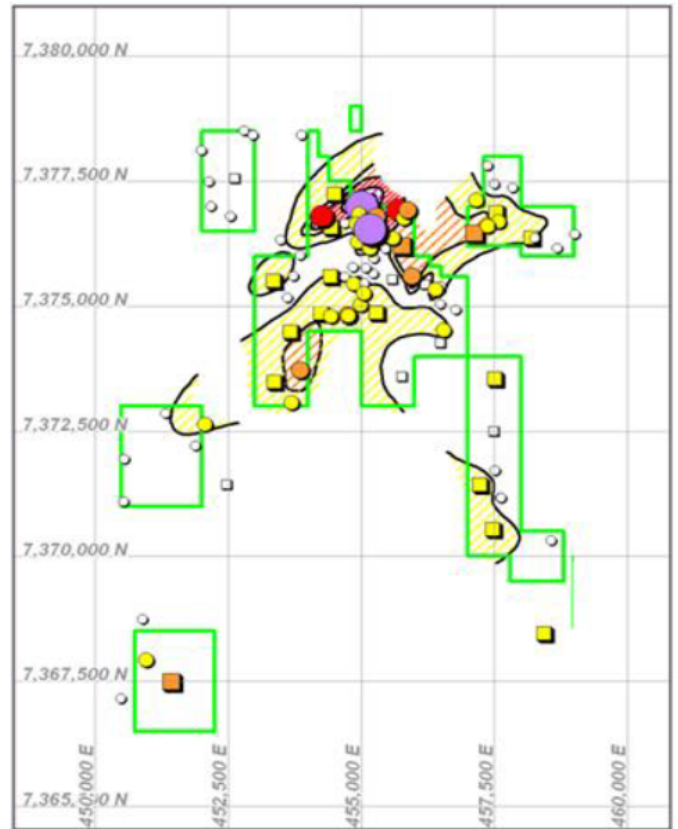
Generative Exploration

Prospect #70



SECTOR SAVONA  
GEOLOGÍA

**LEYENDA**



SECTOR SAVONA  
Distribución del Cobre



## CONTACT DETAILS

Jose Dias Cifuentes  
New Metal Business Director  
jose.dias.cifuentes@sqm.com  
+56 9 7465 7359

Ricardo Gonzalez Montecinos  
Metal Business and Exploration Manager  
ricardo.gonzalez.montecinos@sqm.com  
+56 9 6320 7257

[www.sqm.com](http://www.sqm.com)

