



**Solutions
for human
progress**

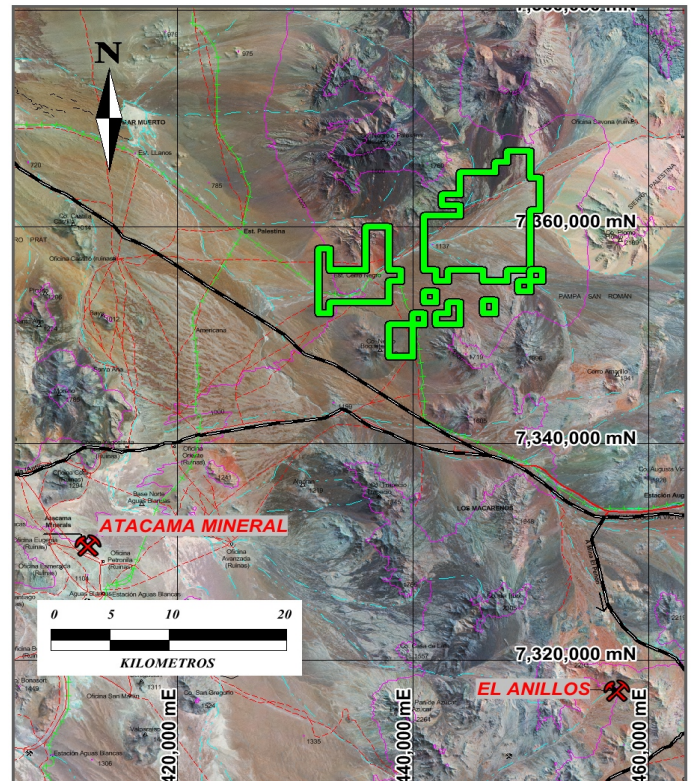
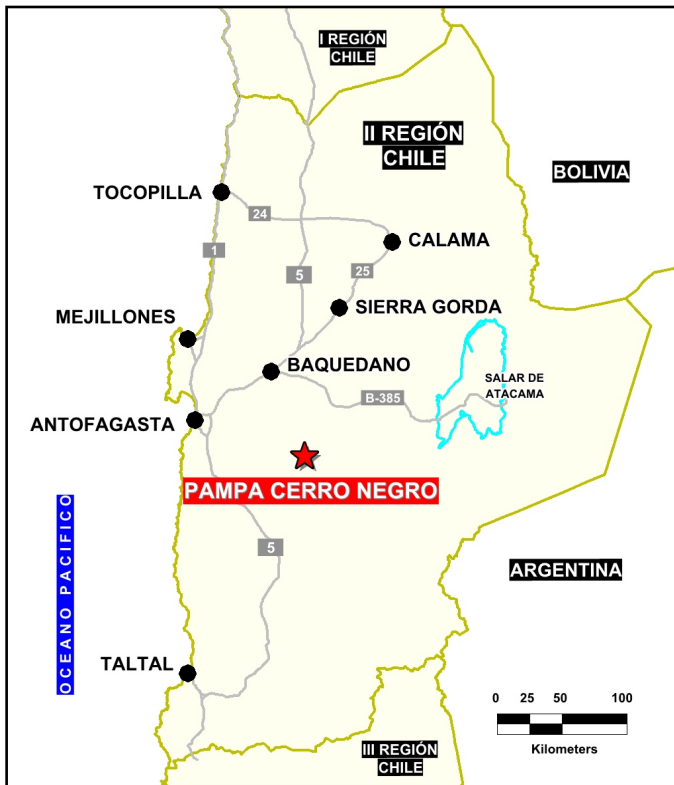
Pampa Cerro Negro

Basic Exploration

Prospect #71

SUMMARY

Transition zone between Paleocene copper belt to the north and the gold belt to the south.



HIGHLIGHTS

Central Northing (UTM):	7360000
Central Easting (UTM):	443000
Elevation (masl):	1600
Metal(s):	Ag-Au (Cu)
Deposit Style:	Epithermal Porphyry
Exploration Stage	Basic Exploration
Area (hectares)	12550
Nearest Project:	Lomas Bayas
Historical:	135 salt crust samples

EXPLORATION WORK

Geological Mapping:	1:50000
Geochemical Samples:	21
Trenching	N/A
Channel Samples	N/A
Geophysics:	ground mag & TEM
RC Drill holes	4 (734 m)
DDH Drill holes:	N/A
Total drilling :	4 (734 m)
Other:	petrography, 85% cover



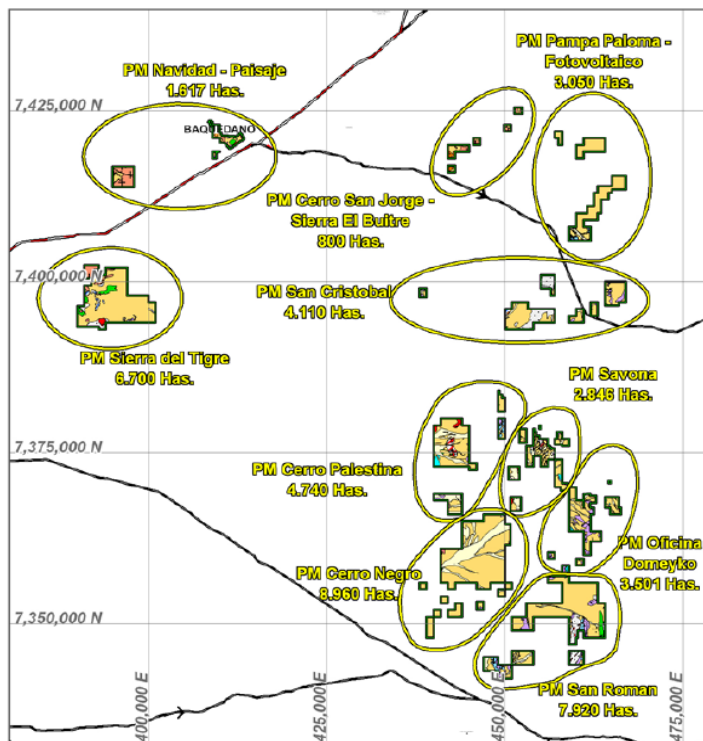
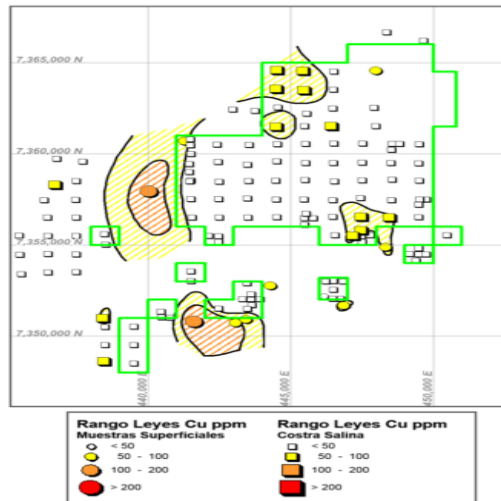


Solutions
for human
progress

Pampa Cerro Negro

Basic Exploration

Prospect #71



AREA DE INTERES BAQUEDANO

SECTOR DE INTERÉS PALESTINA

Proyecto Metalico

GEDM - SQM

LEYENDA

Rocas Estratificadas

- Aluvios
- Coluvio
- Ignimbrita, Tobas
- Vidrio Volcanico
- Aglomerados
- Andesitas Vesiculares y Amigdaloidales (Kr)
- Andesitas Porfídicas (Kr)
- Calizas y Areniscas de la Formación Sierra del Cobre (Jr)
- Areniscas Foliadas (Pz)

Rocas Intrusivas

- Roca Alterada
- Riolitas con Ojos de Cuero, Dioritas y Latitas (Ti)
- Dioritas (Jr)
- Granodioritas (Jr)
- Roca Indiferenciada

SIMBOLOGÍA

- Fallas
- Drenajes
- Propiedad Minera
- Curvas de Nivel
- Veta con Oxidos de Cobre
- Dique
- Carretera
- Huella

CONTACT DETAILS

Jose Dias Cifuentes
New Metal Business Director
jose.dias.cifuentes@sqm.com
+56 9 7465 7359

Ricardo Gonzalez Montecinos
Metal Business and Exploration Manager
ricardo.gonzalez.montecinos@sqm.com
+56 9 6320 7257

www.sqm.com

