

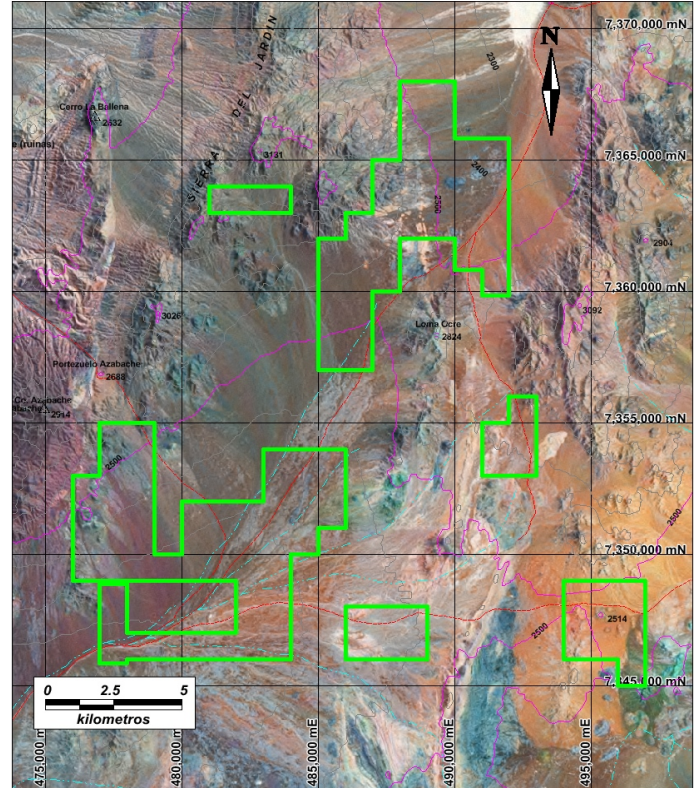
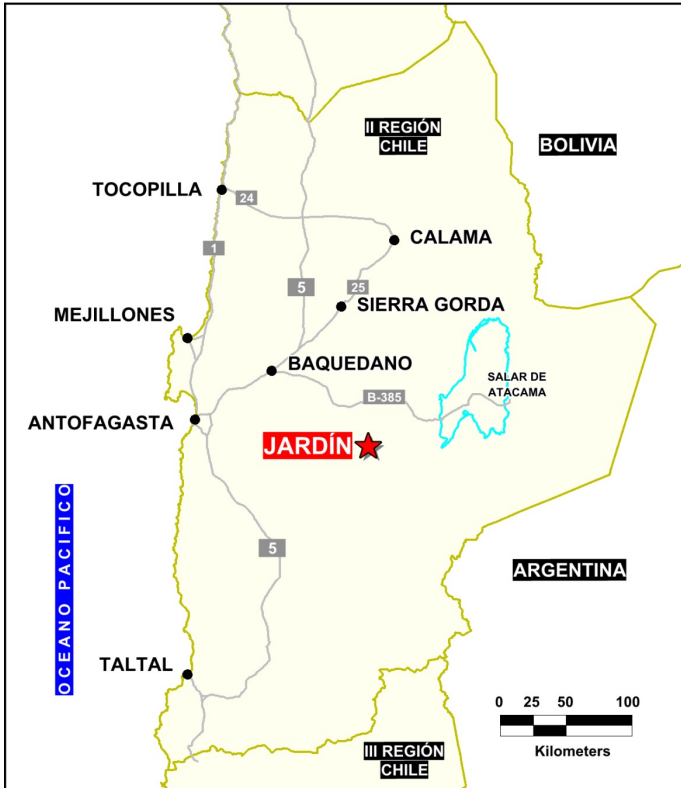


**Solutions
for human
progress**

Jardin
Generative Exploration
Prospect #72

SUMMARY

95% covered prospect within the Eoceno-Oligoceno copper belt and Domeyko fault system north of the Escondida copper cluster.
Little or no previous work completed in the district.



HIGHLIGHTS

Central Northing (UTM):	7353200
Central Easting (UTM):	487400
Elevation (masl):	2310
Metal(s):	Cu
Deposit Style:	porphyry
Exploration Stage	Generative Exploration
Area (hectares)	10800
Nearest Project:	-
Historical:	66 drillholes made by unknown

EXPLORATION WORK

Geological Mapping:	1:100000
Geochemical Samples:	30
Trenching	N/A
Channel Samples	N/A
Geophysics:	N/A
RC Drill holes	N/A
DDH Drill holes:	N/A
Total drilling:	N/A
Other:	N/A





Solutions
for human
progress

Jardin
Generative Exploration
Prospect #72

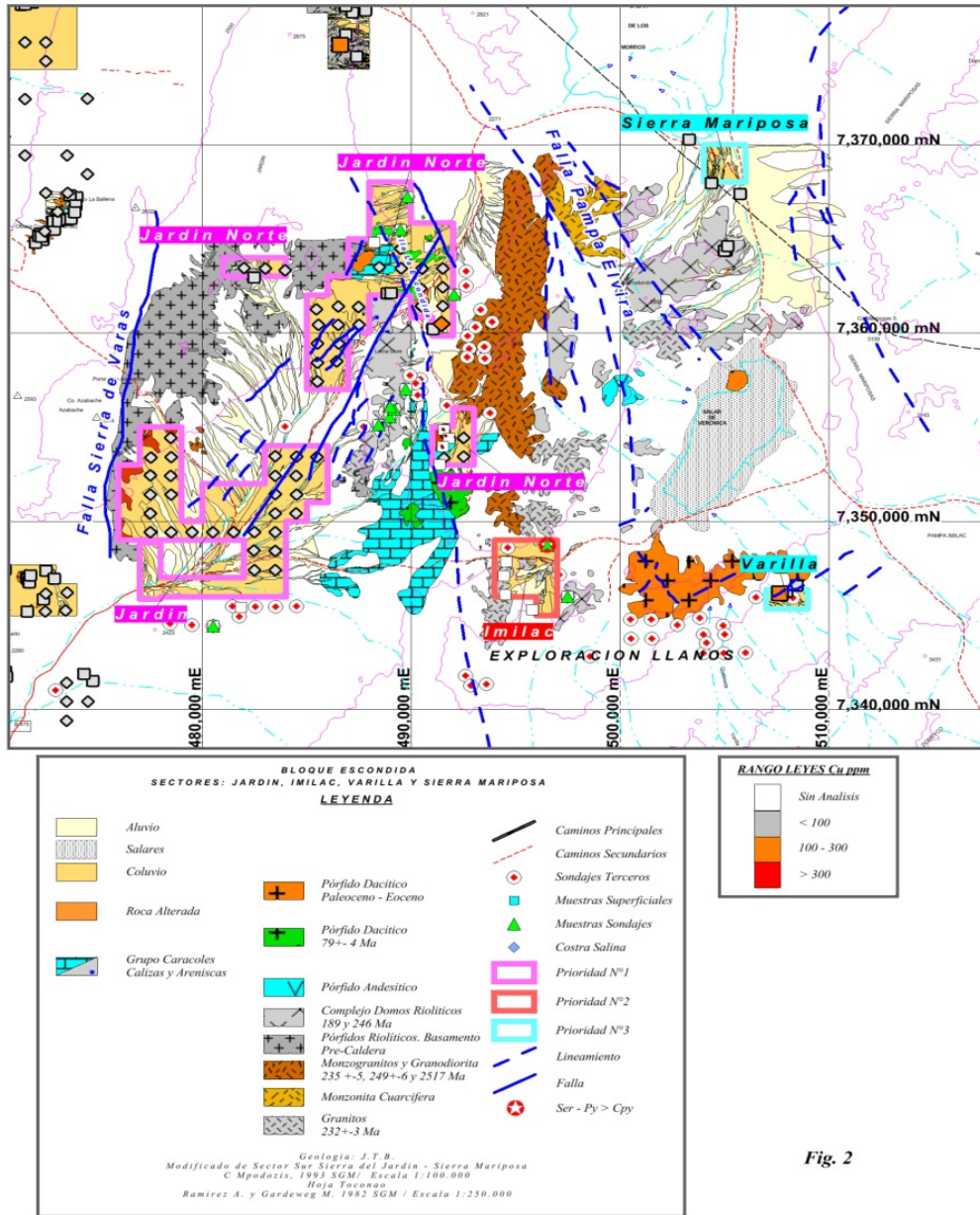


Fig. 2

**CONTACT
DETAILS**

Jose Dias Cifuentes
New Metal Business Director
jose.dias.cifuentes@sqm.com
+56 9 7465 7359

Ricardo Gonzalez Montecinos
Metal Business and Exploration Manager
ricardo.gonzalez.montecinos@sqm.com
+56 9 6320 7257

www.sqm.com

