



Solutions  
for human  
progress

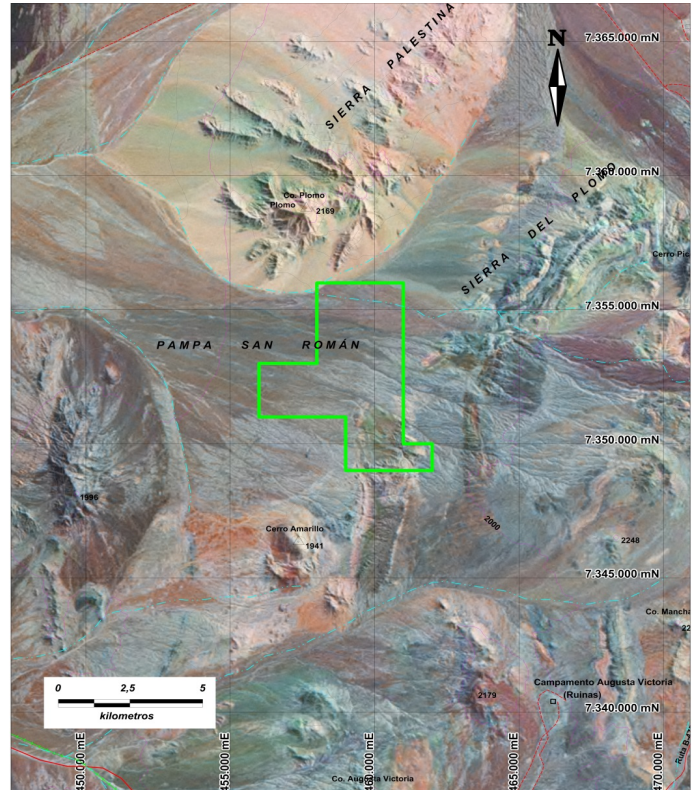
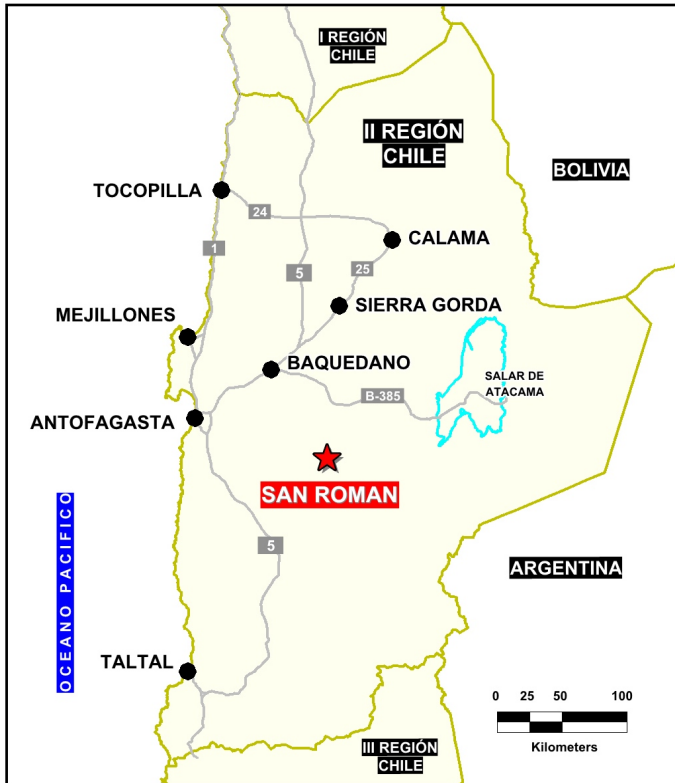
# San Roman

Basic Exploration

Prospect #73

## SUMMARY

Anomalous copper results from leached rock units; 3 short drill holes at the southern boundary of the concessions confirming silica-sericite-clay alteration and possible pyrite halo (2%-5% pyrite).



## HIGHLIGHTS

Central Northing (UTM):	7352000
Central Easting (UTM):	459000
Elevation (masl):	1750
Metal(s):	Cu
Deposit Style:	Porphyry
Exploration Stage	Basic Exploration
Area (hectares)	7954
Nearest Project:	Chimborazo
Historical:	15 salt crust samples; Teck

## EXPLORATION WORK

Geological Mapping:	1:20000
Geochemical Samples:	302
Trenching	N/A
Channel Samples	N/A
Geophysics:	ground mag (58lkm)
RC Drill holes	4 (850 m)
DDH Drill holes:	N/A
Total drilling :	4 (850 m)
Other:	90% cover



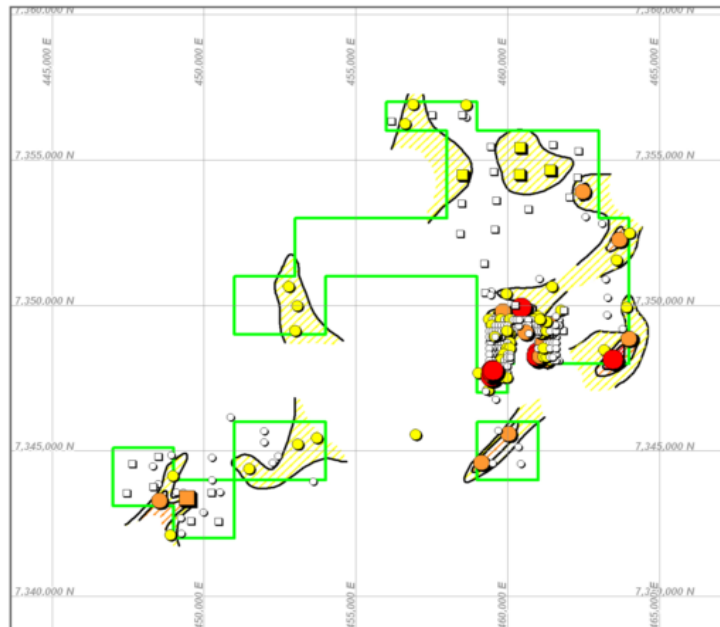
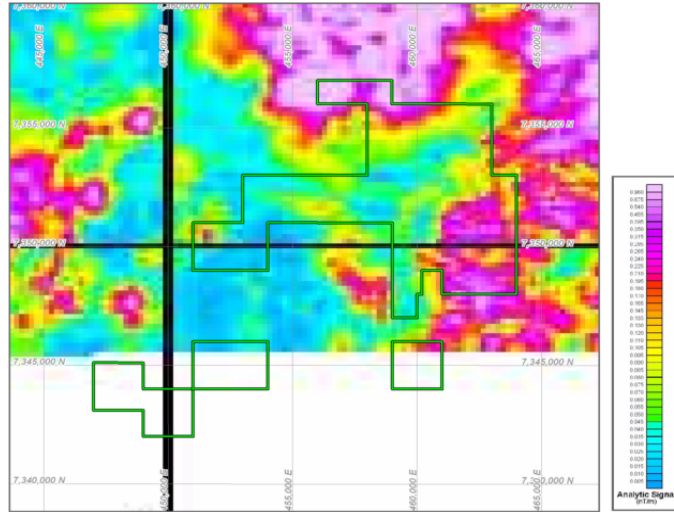


Solutions  
for human  
progress

# San Roman

Basic Exploration

Prospect #73



Rango Leyes Cu ppm Muestras Superficiales	Rango Leyes Cu ppm Costra Salina
○ < 50	□ < 50
● 50 - 100	■ 50 - 100
● 100 - 200	■ 100 - 200
● > 200	■ > 200

## CONTACT DETAILS

Jose Dias Cifuentes  
New Metal Business Director  
jose.dias.cifuentes@sqm.com  
+56 9 7465 7359

Ricardo Gonzalez Montecinos  
Metal Business and Exploration Manager  
ricardo.gonzalez.montecinos@sqm.com  
+56 9 6320 7257

[www.sqm.com](http://www.sqm.com)

