



Solutions  
for human  
progress

# Distrito Trapecio

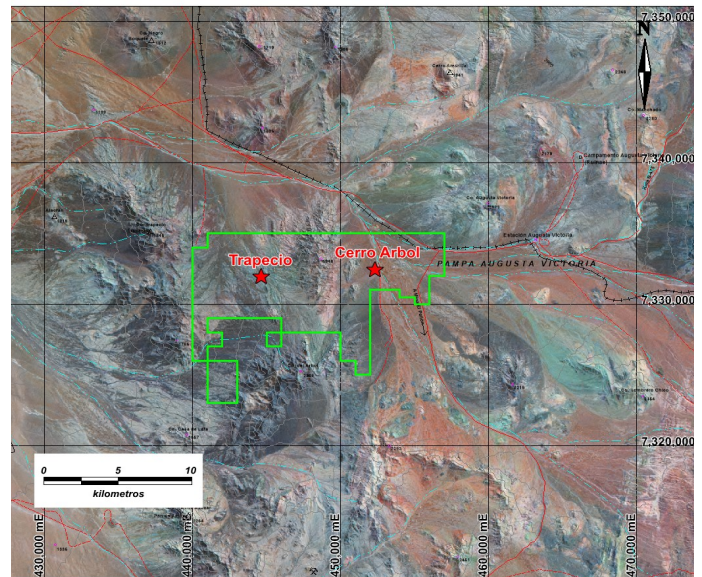
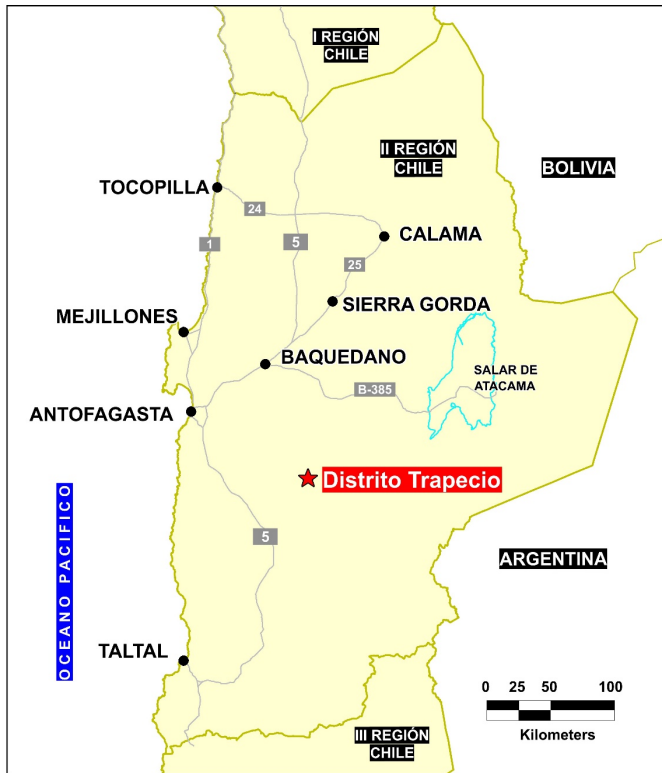
Generative Exploration

Prospect #75

## SUMMARY

Trapecio: Covered area north west of the El Peñon gold-silver mine.

Cerro Arbol: North of the Anillo (Codeloc-Orosur) lithocap, between the Eocene and Paleocene copper belts, a largely covered area with anomalous Mo values in caliche drillhole samples.



## HIGHLIGHTS

Central Northing (UTM):	7332000
Central Easting (UTM):	448000
Elevation (masl):	1540
Metal(s):	Cu (Ag)
Deposit Style:	epithermal, porphyry
Exploration Stage	Generative Exploration
Area (hectares)	11350
Nearest Project:	El Peñon and Victoria Mine (Yamana)
Historical:	43 salt crust drill holes

## EXPLORATION WORK

Geological Mapping:	1:100000
Geochemical Samples:	60
Trenching	N/A
Channel Samples	N/A
Geophysics:	N/A
RC Drill holes	N/A
DDH Drill holes:	N/A
Total drilling :	N/A
Other:	N/A





Solutions  
for human  
progress

# Distrito Trapecio

Generative Exploration

Prospect #75

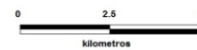
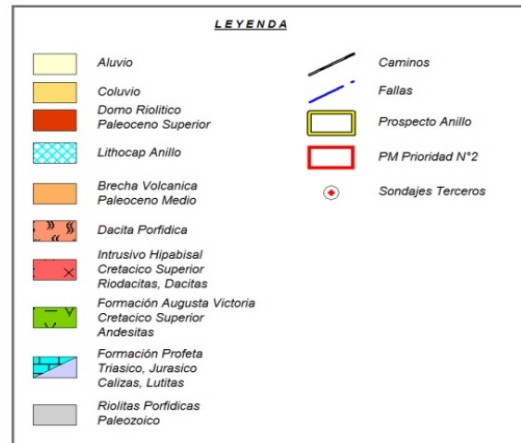
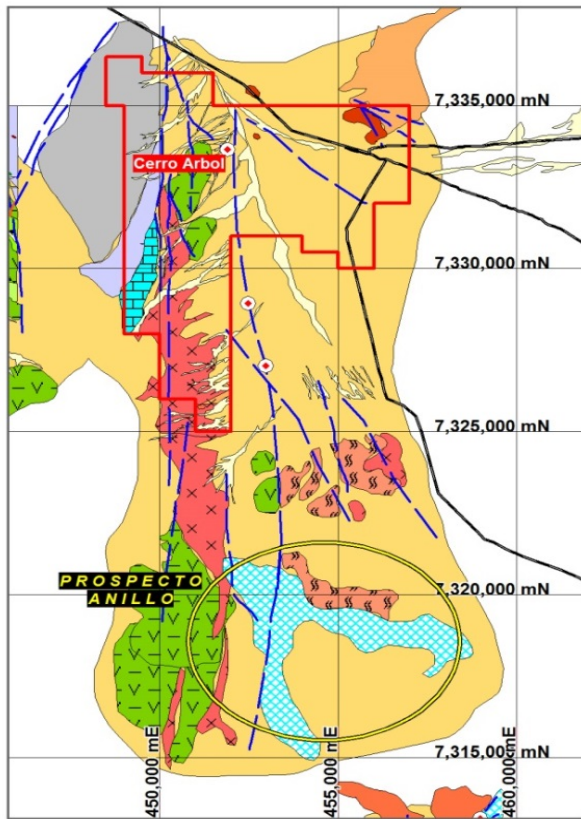
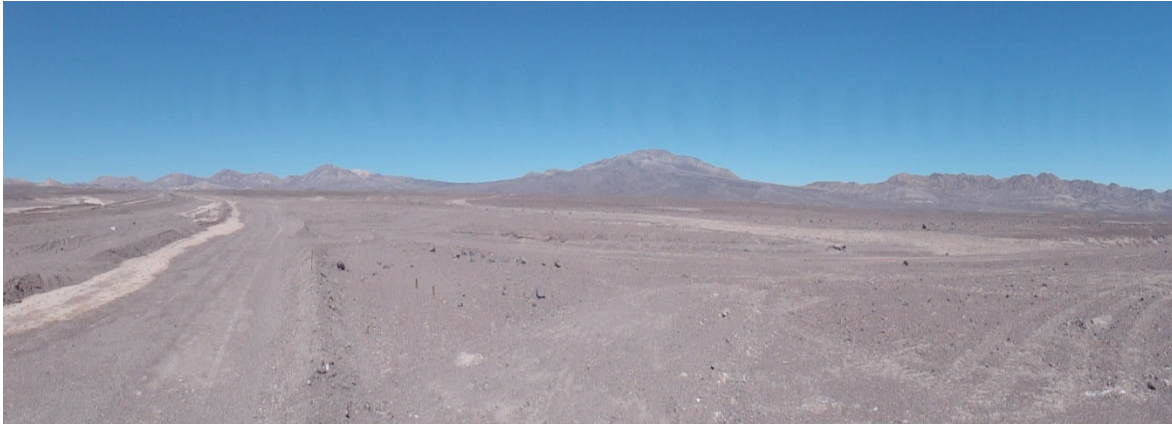


FIG. 2

## CONTACT DETAILS

Jose Dias Cifuentes  
New Metal Business Director  
jose.dias.cifuentes@sqm.com  
+56 9 7465 7359

Ricardo Gonzalez Montecinos  
Metal Business and Exploration Manager  
ricardo.gonzalez.montecinos@sqm.com  
+56 9 6320 7257

[www.sqm.com](http://www.sqm.com)

