



Solutions
for human
progress

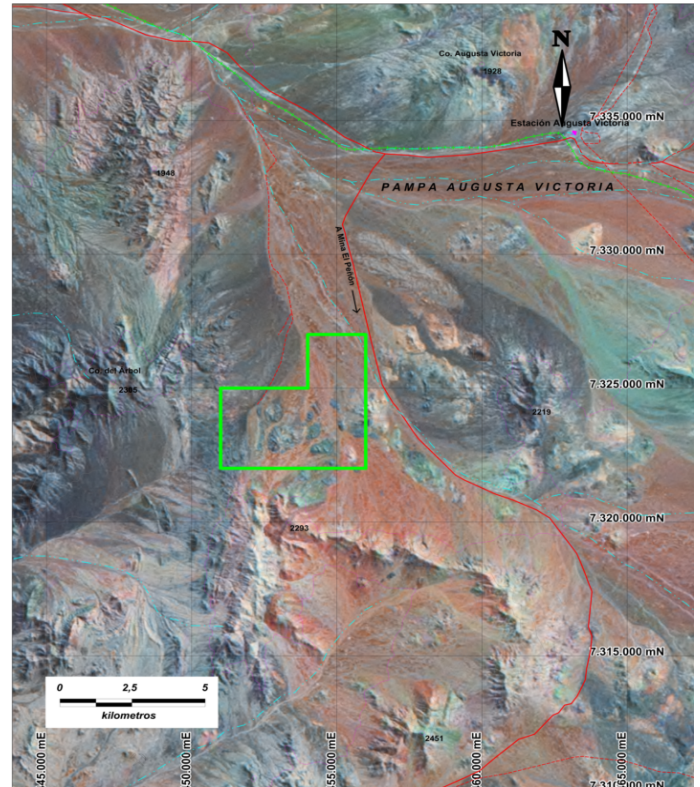
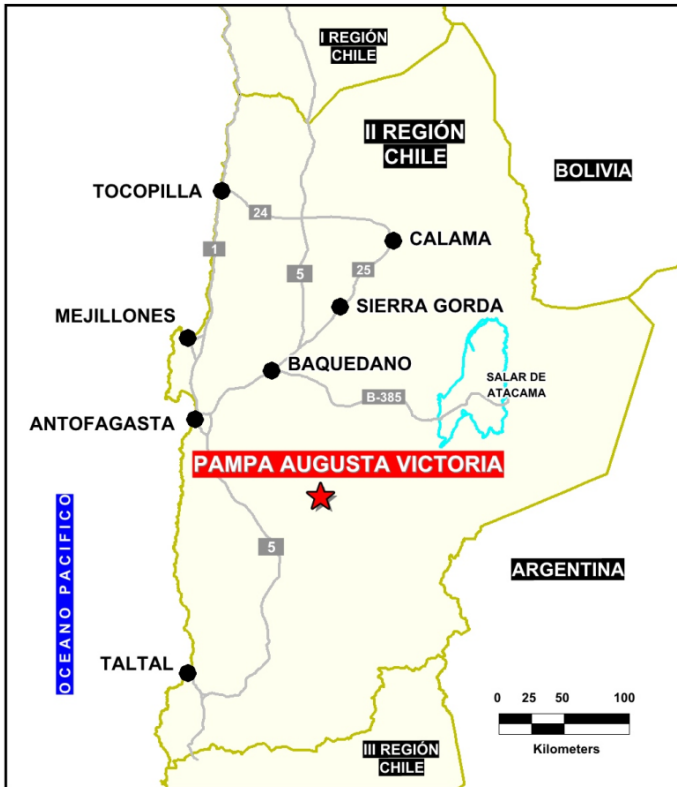
Pampa Augusta Victoria

Basic Exploration

Prospect #76

SUMMARY

North-south trending veins similar to those being exploited on the adjacent concessions by Yamana.



HIGHLIGHTS

Central Northing (UTM):	7323500
Central Easting (UTM):	453500
Elevation (masl):	1800
Metal(s):	Ag
Deposit Style:	Epithermal Veins
Exploration Stage	Basic Exploration
Area (hectares)	1906
Nearest Project:	El Peñon
Historical:	10 salt crust samples

EXPLORATION WORK

Geological Mapping:	1:4000
Geochemical Samples:	40
Trenching	34 (2400)
Channel Samples	N/A
Geophysics:	N/A
RC Drill holes	26 (1705 m)
DDH Drill holes:	N/A
Total drilling :	26 (1705 m)
Other:	50% cover



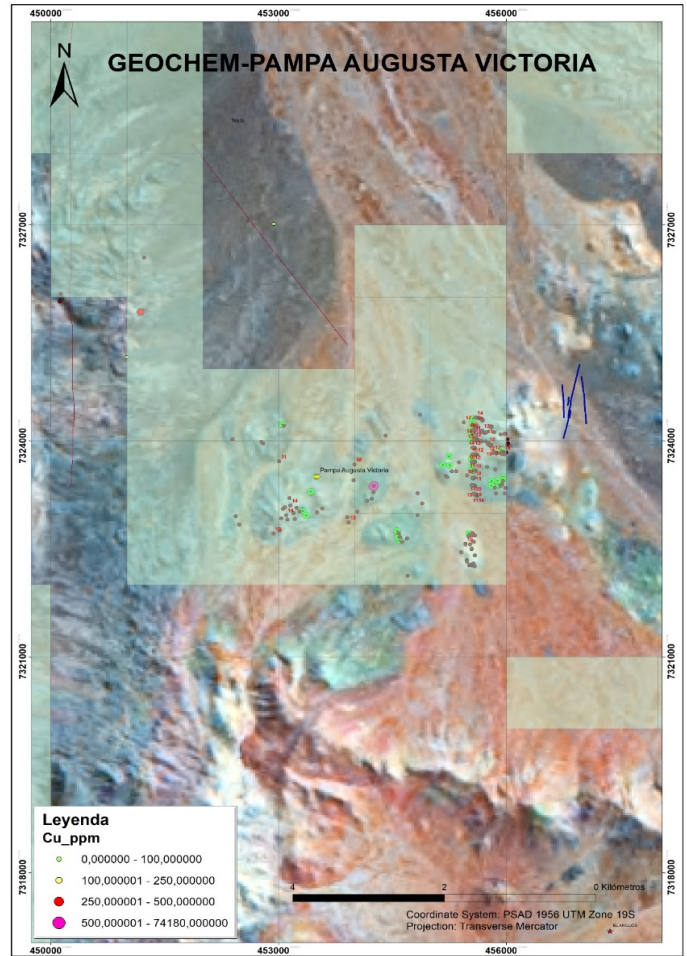
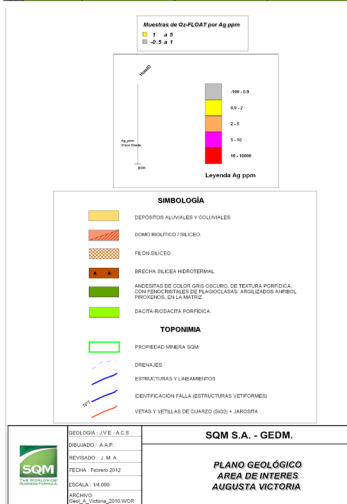
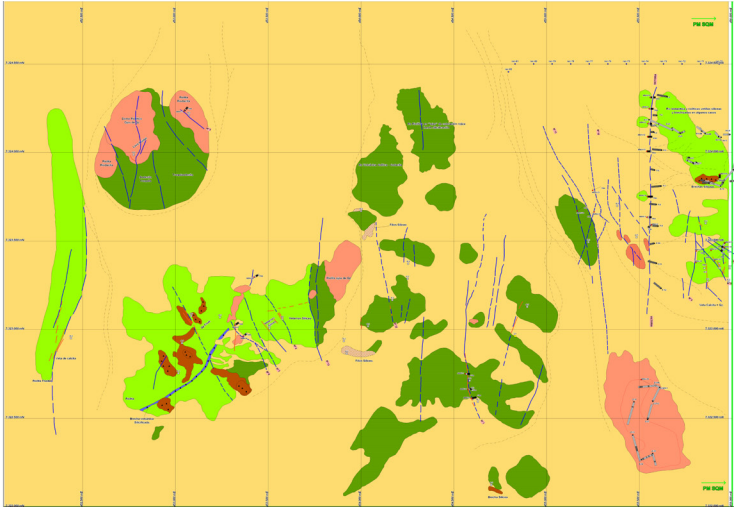


Solutions
for human
progress

Pampa Augusta Victoria

Basic Exploration

Prospect #76



CONTACT DETAILS

Jose Dias Cifuentes
New Metal Business Director
jose.dias.cifuentes@sqm.com
+56 9 7465 7359

Ricardo Gonzalez Montecinos
Metal Business and Exploration Manager
ricardo.gonzalez.montecinos@sqm.com
+56 9 6320 7257

www.sqm.com

