



Solutions
for human
progress

Distrito Paisaje

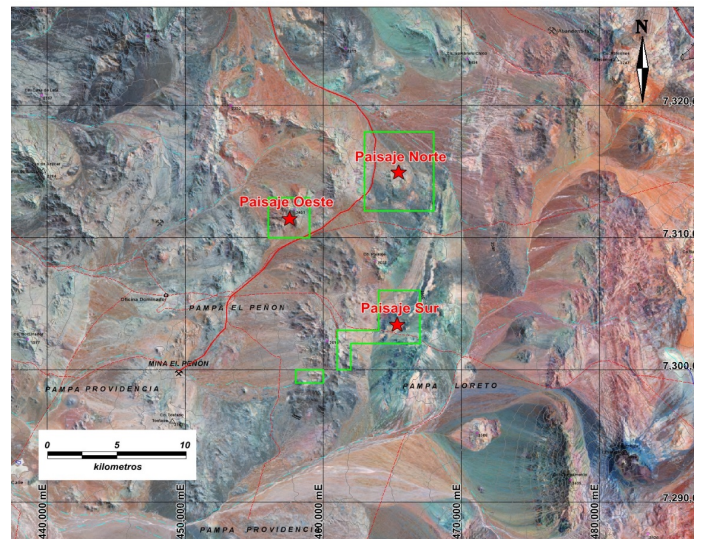
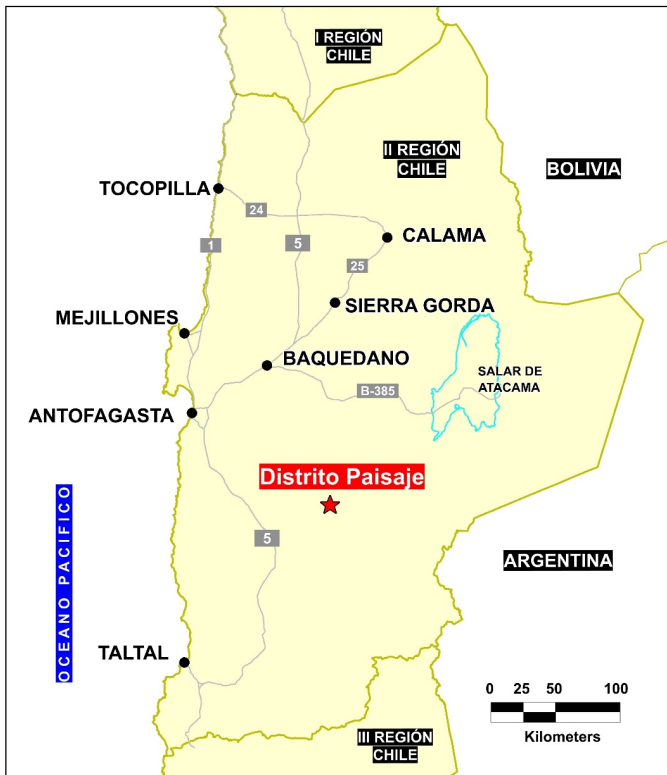
Basic Exploration

Prospect #77

SUMMARY

Paisaje Norte: Confirming macro elements of target including regional structure, localized intrusions (rhyolite domes) and alteration (silica - argillic) are Ag anomalies associated with limonitic stockworks uncovered by trenching.

Paisaje Sur: Rhyolitic dome with associated argillic alteration anomalous Cu in oxide and Au at surface
Paisaje Oeste: Anomalous Cu and Mo values associated with a litocap with adjacent quartz-sericite-pyrite alteration-mineralization.



HIGHLIGHTS

Central Northing (UTM):	7309000
Central Easting (UTM):	463000
Elevation (masl):	2200
Metal(s):	Cu; Au-Ag
Deposit Style:	Porphyry; Epithermal
Exploration Stage	Basic Exploration
Area (hectares)	5614
Nearest Project:	El Peñon
Historical:	54 salt crust samples; 3rd drillholes

EXPLORATION WORK

Geological Mapping:	1:10000
Geochemical Samples:	741
Trenching	48 (11000)
Channel Samples	1546
Geophysics:	N/A
RC Drill holes	21 (1950 m)
DDH Drill holes:	N/A
Total drilling :	21 (1950 m)
Other:	Scheduled work program by SQM 2019





Solutions
for human
progress

Distrito Paisaje

Basic Exploration

Prospect #77

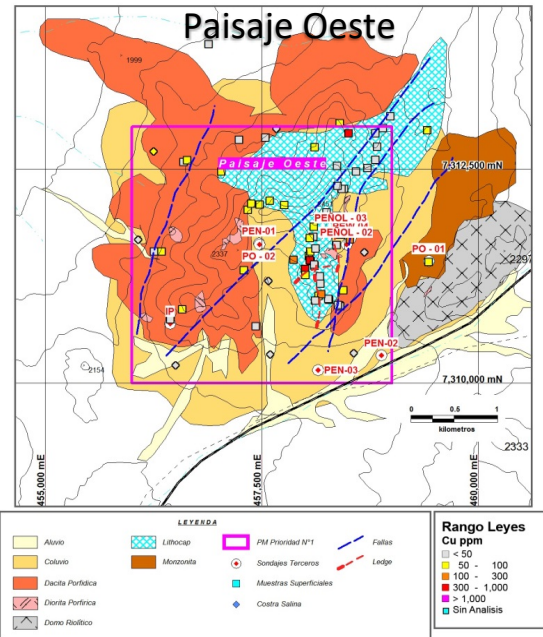
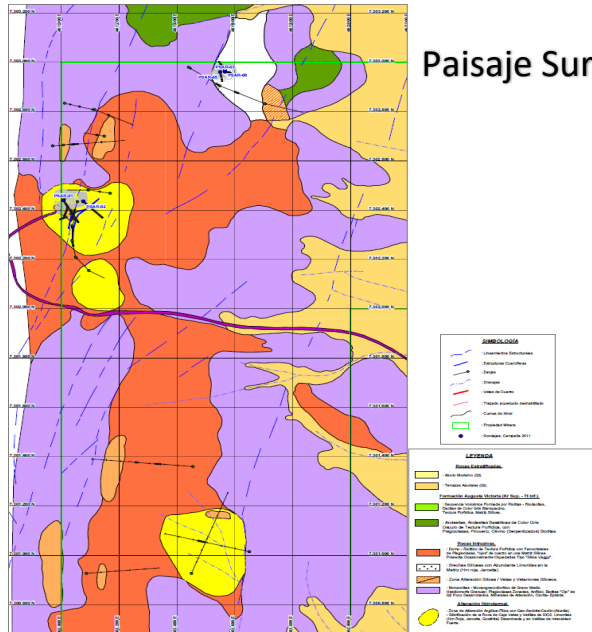
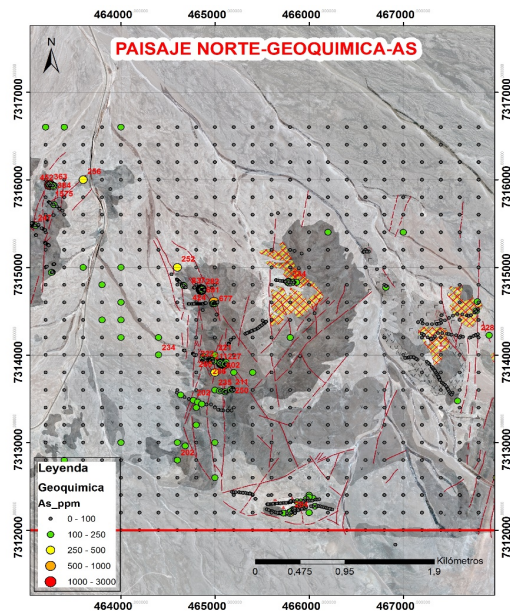


Fig. 3



CONTACT DETAILS

Jose Dias Cifuentes
New Metal Business Director
jose.dias.cifuentes@sqm.com
+56 9 7465 7359

Ricardo Gonzalez Montecinos
Metal Business and Exploration Manager
ricardo.gonzalez.montecinos@sqm.com
+56 9 6320 7257

www.sqm.com

