



Solutions
for human
progress

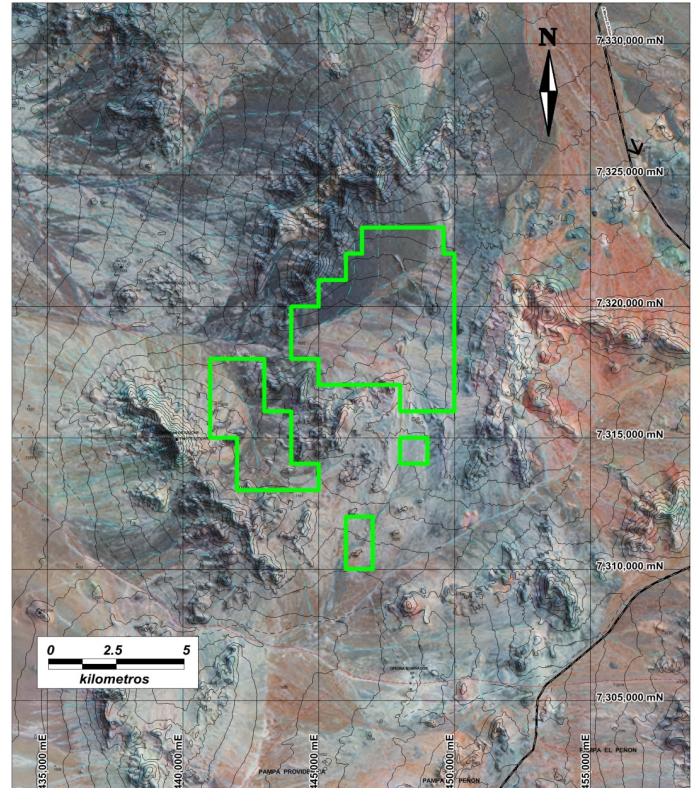
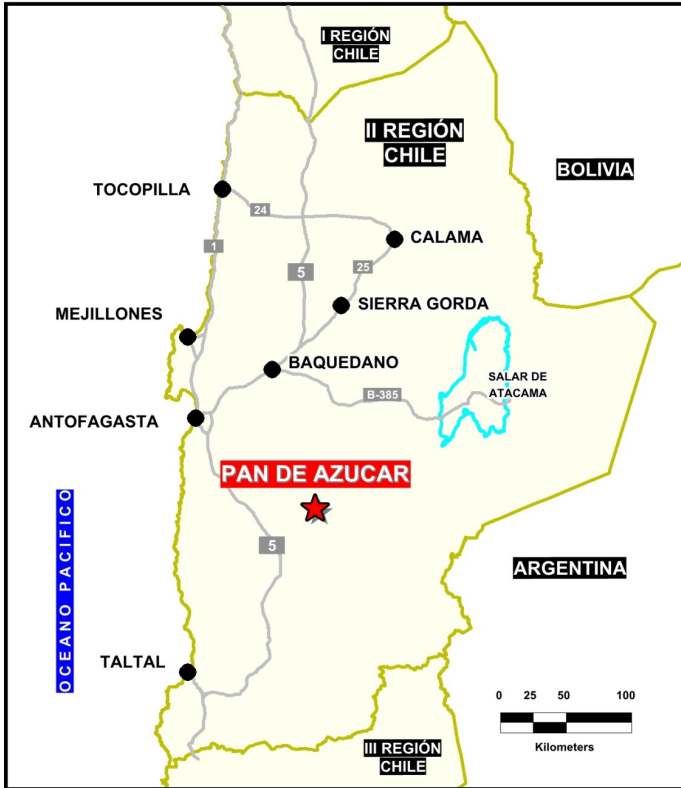
Pan de Azucar

Basic Exploration

Prospect #78

SUMMARY

Scout drilling confirms epithermal style mineralization with up to 3 g/t Au and 61 g/t Ag associated with 10-15m wide silica vein.



HIGHLIGHTS

Central Northing (UTM):	7314000
Central Easting (UTM):	465500
Elevation (masl):	2000
Metal(s):	Cu; Au-Ag
Deposit Style:	Porphyry; Epithermal
Exploration Stage	Basic Exploration
Area (hectares)	1810
Nearest Project:	Anillo (Codelco)
Historical:	10 salt crust samples

EXPLORATION WORK

Geological Mapping:	1:5000
Geochemical Samples:	62
Trenching	10 (1689)
Channel Samples	404
Geophysics:	N/A
RC Drill holes	7 (479 m)
DDH Drill holes:	N/A
Total drilling :	7 (479 m)
Other:	80% cover





Solutions
for human
progress

Pan de Azucar

Basic Exploration

Prospect #78



CONTACT DETAILS

Jose Dias Cifuentes
New Metal Business Director
jose.dias.cifuentes@sqm.com
+56 9 7465 7359

Ricardo Gonzalez Montecinos
Metal Business and Exploration Manager
ricardo.gonzalez.montecinos@sqm.com
+56 9 6320 7257

www.sqm.com

