



**Solutions  
for human  
progress**

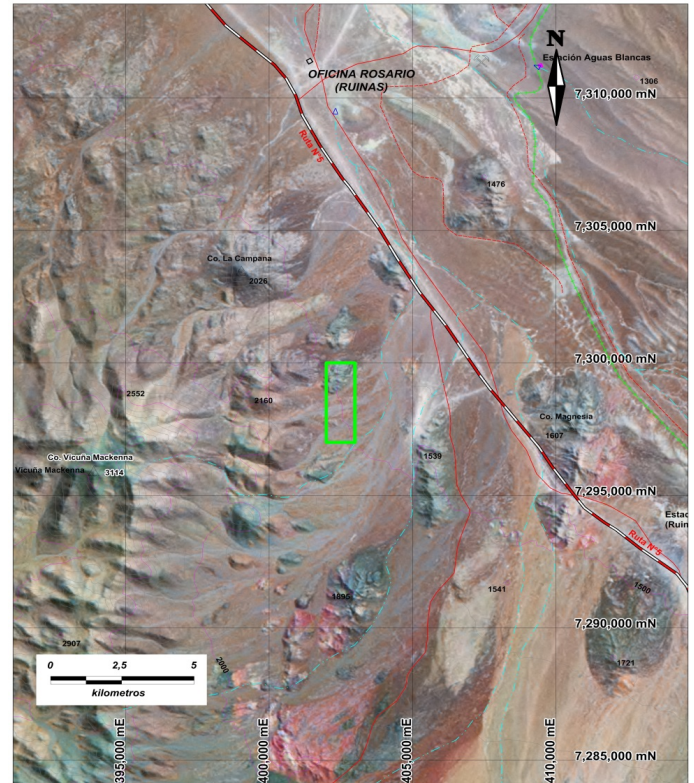
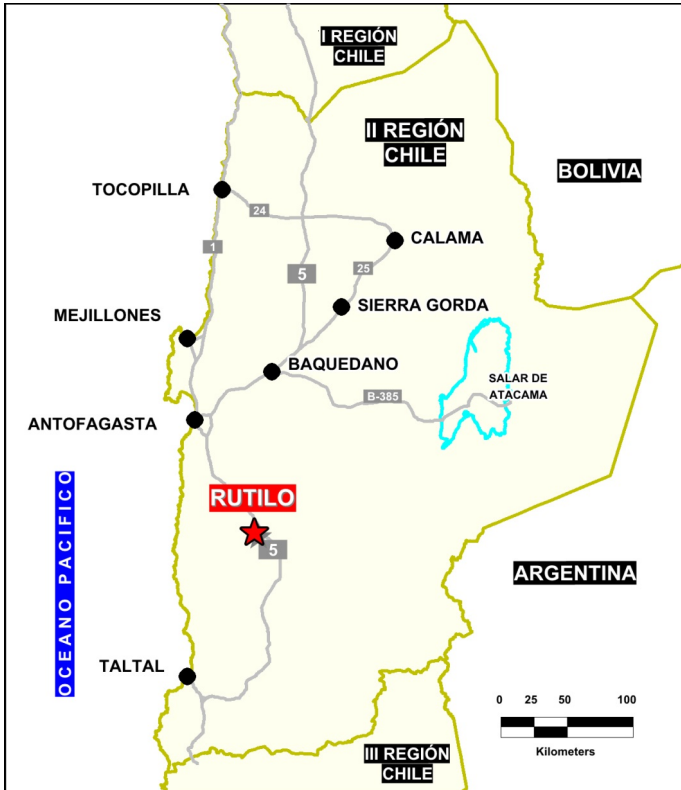
**Rutilo**

Generative Exploration

Prospect #79

## SUMMARY

Along the eastern slope of Cerro Vicuña Mackena, within an intrusive rock unit, an area of approximately 300 hectares was identified as having rutilo and ilmenite mineralization at surface. In this area, test pitting by artisanal miners is present with a confirmed presence of silver mineralization. The test pitting appears to have been following a bluish coloration of mineralization association with zones of strong silicification.



## HIGHLIGHTS

Central Northing (UTM):	7298000
Central Easting (UTM):	402300
Elevation (masl):	1500
Metal(s):	Ag
Deposit Style:	veins
Exploration Stage	Generative Exploration
Area (hectares)	299
Nearest Project:	-
Historical:	-

## EXPLORATION WORK

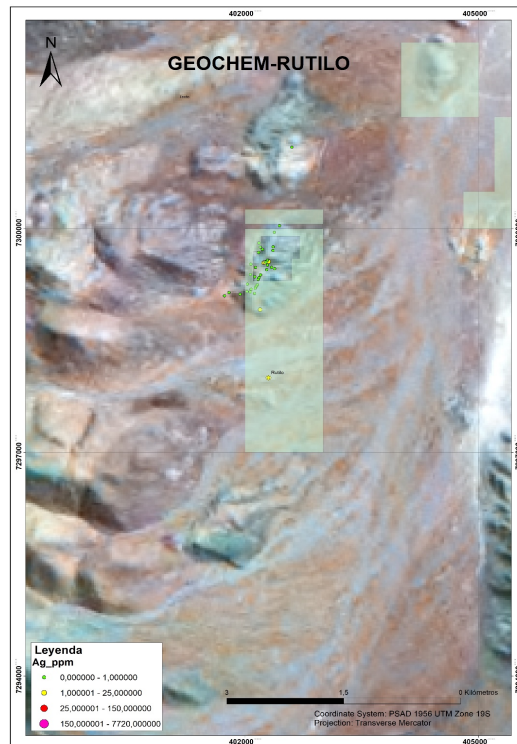
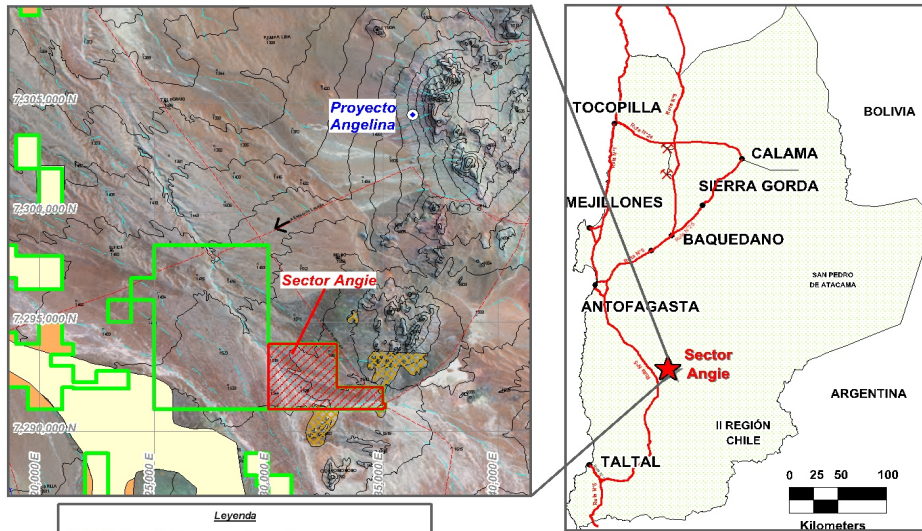
Geological Mapping:	1:5000
Geochemical Samples:	40
Trenching	N/A
Channel Samples	N/A
Geophysics:	N/A
RC Drill holes	N/A
DDH Drill holes:	N/A
Total drilling :	N/A
Other:	85% cover





**Solutions  
for human  
progress**

**Rutilo**  
Generative Exploration  
Prospect #79



**CONTACT  
DETAILS**

**Jose Dias Cifuentes**  
New Metal Business Director  
jose.dias.cifuentes@sqm.com  
+56 9 7465 7359

**Ricardo Gonzalez Montecinos**  
Metal Business and Exploration Manager  
ricardo.gonzalez.montecinos@sqm.com  
+56 9 6320 7257

[www.sqm.com](http://www.sqm.com)

