



Solutions  
for human  
progress

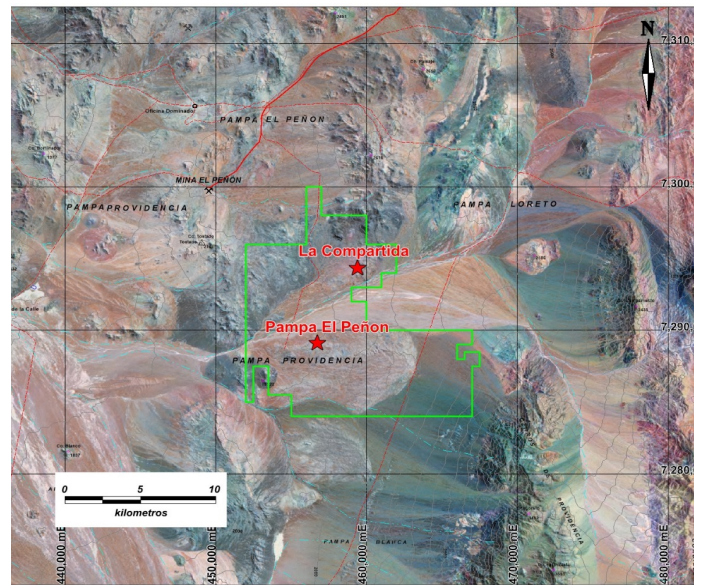
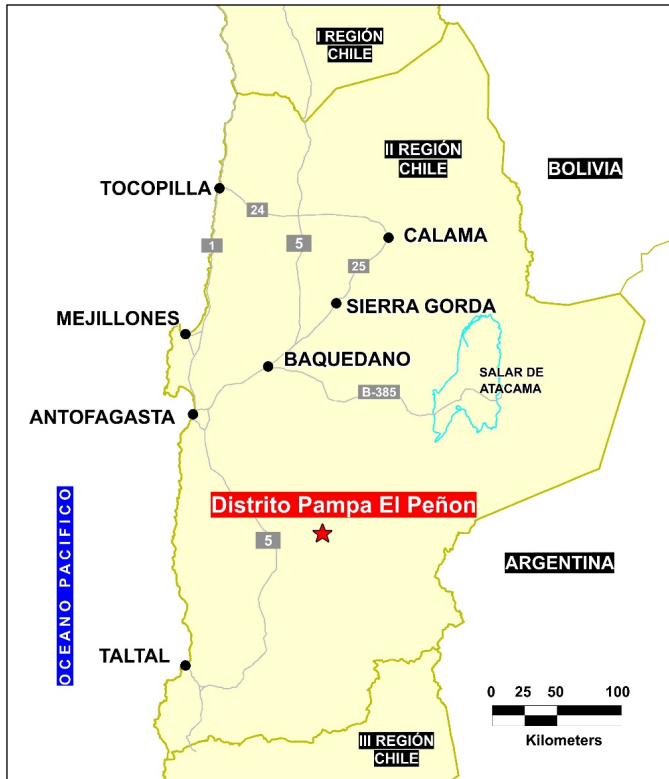
# Distrito Pampa El Peñon

Generative Exploration

Prospect #80

## SUMMARY

Largely covered area south of the El Peñon (silver-gold) mine. Evidence of potassic alteration with chalcopryrite-pyrite mineralization, subcropping Cu-Pb-Zn bearing veins and silicic breccia with alunite.



## HIGHLIGHTS

Central Northing (UTM):	7292000
Central Easting (UTM):	458000
Elevation (masl):	1900
Metal(s):	Cu
Deposit Style:	Porphyry
Exploration Stage	Generative Exploration
Area (hectares)	7320
Nearest Project:	El Peñon
Historical:	64 salt crust samples

## EXPLORATION WORK

Geological Mapping:	1:100000
Geochemical Samples:	120
Trenching	N/A
Channel Samples	N/A
Geophysics:	N/A
RC Drill holes	N/A
DDH Drill holes:	N/A
Total drilling :	N/A
Other:	Scheduled work program by SQM 2019



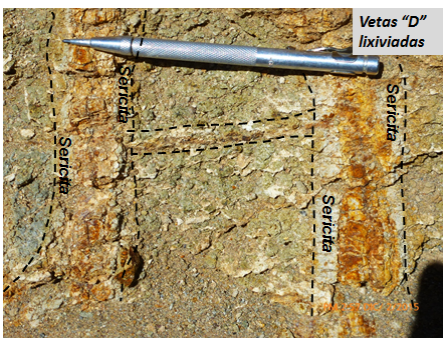
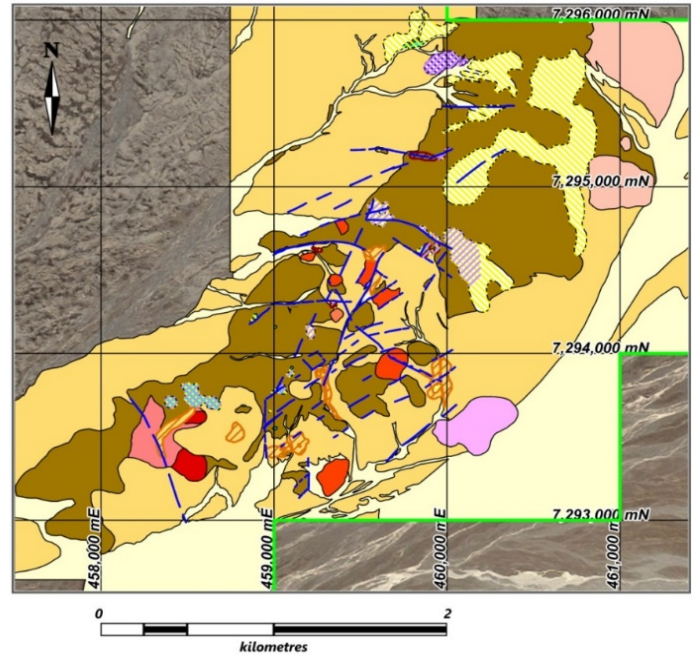
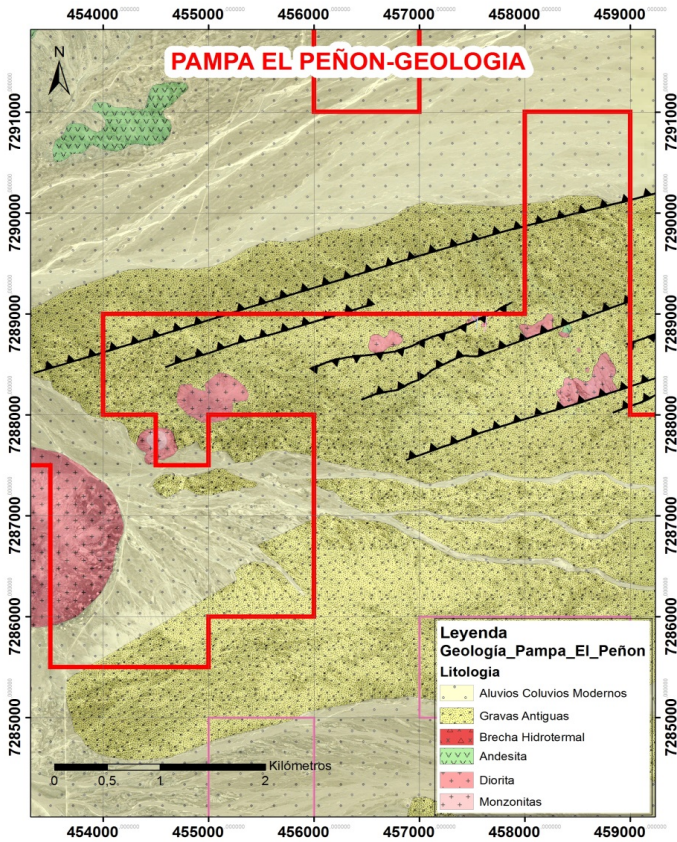


Solutions  
for human  
progress

# Distrito Pampa El Peñon

Generative Exploration

Prospect #80



Vetillas "D" y "A" lixiviadas

## CONTACT DETAILS

Jose Dias Cifuentes  
New Metal Business Director  
jose.dias.cifuentes@sqm.com  
+56 9 7465 7359

Ricardo Gonzalez Montecinos  
Metal Business and Exploration Manager  
ricardo.gonzalez.montecinos@sqm.com  
+56 9 6320 7257

[www.sqm.com](http://www.sqm.com)

