



Solutions
for human
progress

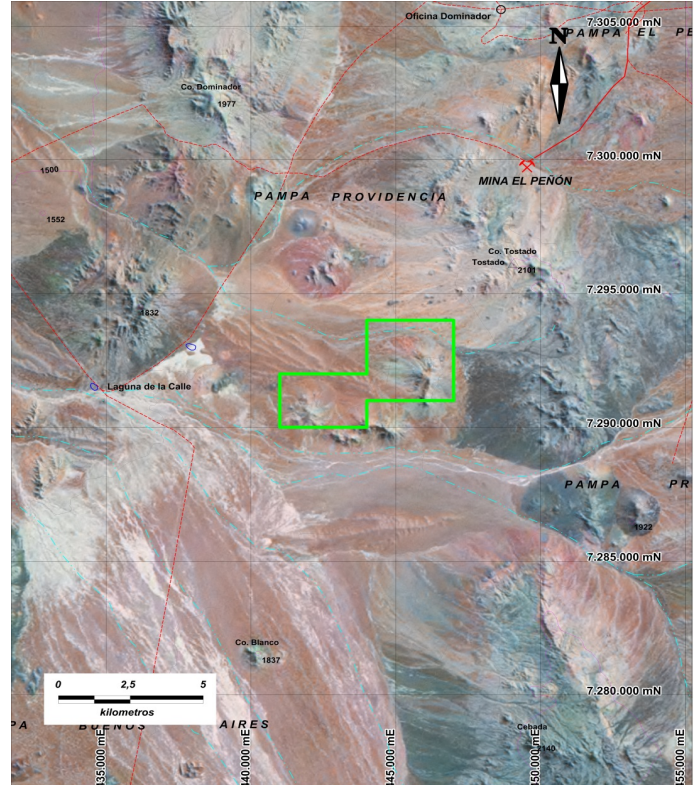
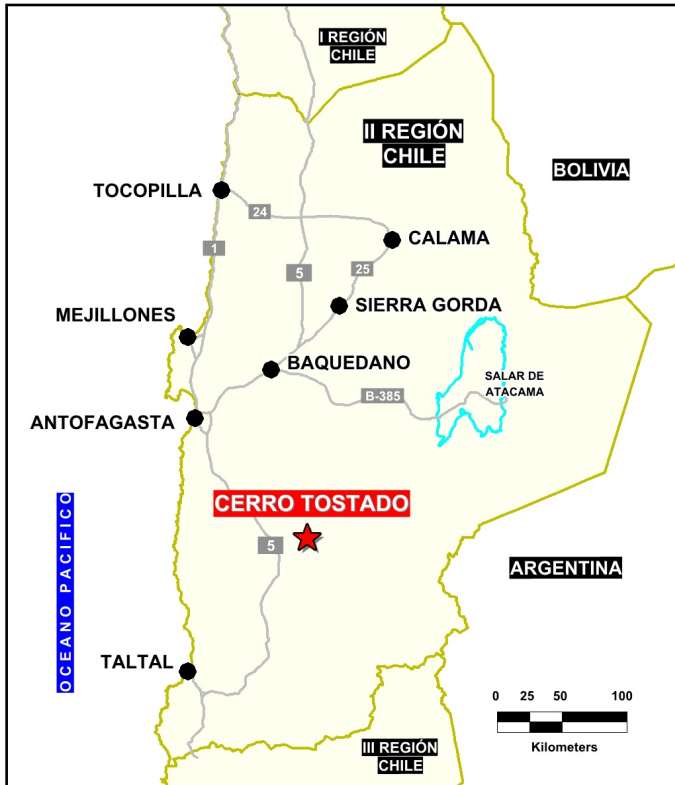
Cerro Tostado

Advanced Exploration

Prospect #82

SUMMARY

Surface trenching and sampling identified up to 570g/t Ag; drilling confirmed structural controls on mineralization with a maximum intercept to date of 1580g/t Ag.



HIGHLIGHTS

Central Northing (UTM):	7291000
Central Easting (UTM):	443800
Elevation (masl):	1700
Metal(s):	Au-Ag
Deposit Style:	Epithermal
Exploration Stage	Advanced Exploration
Area (hectares)	1504
Nearest Project:	El Peñon
Historical:	-

EXPLORATION WORK

Geological Mapping:	1:5000
Geochemical Samples:	90
Trenching	12
Channel Samples	478
Geophysics:	N/A
RC Drill holes	22 (4261 m)
DDH Drill holes:	N/A
Total drilling :	22 (4261 m)
Other:	80% cover



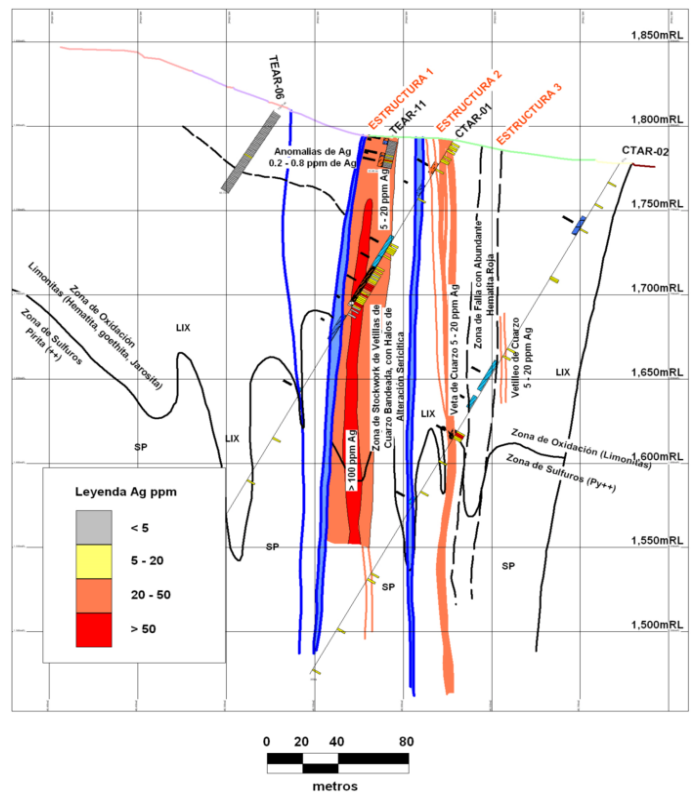
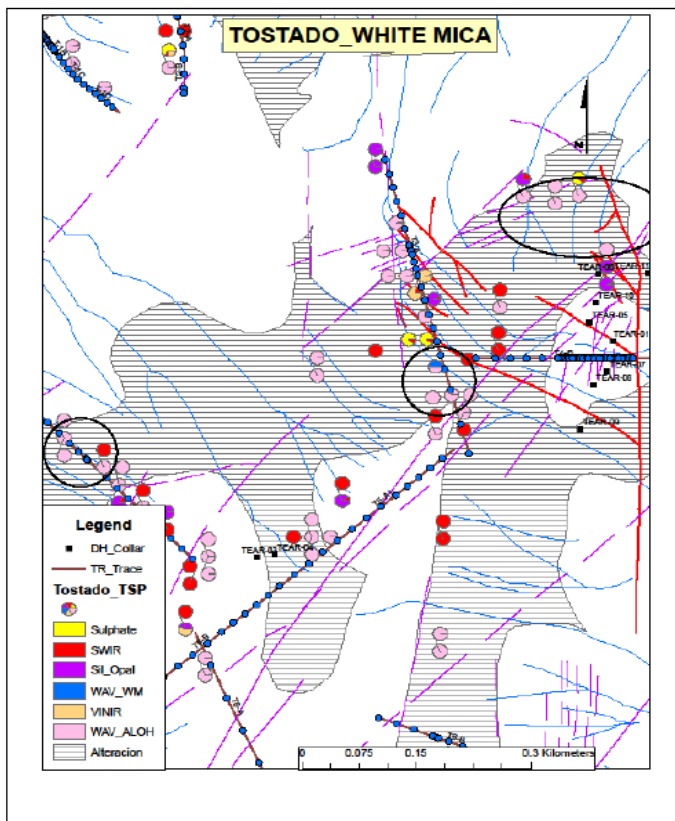
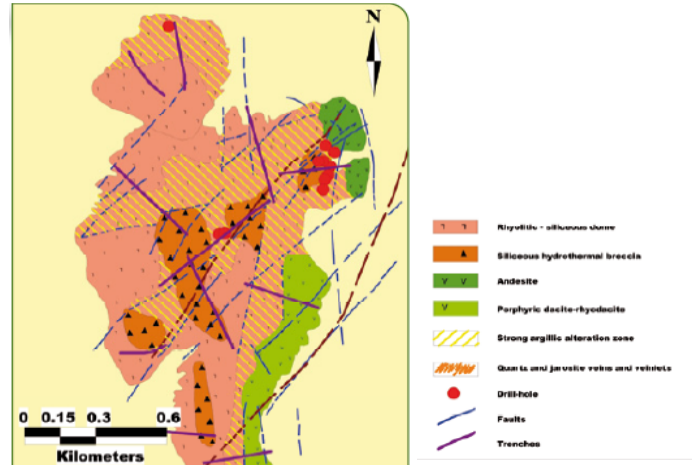


Solutions
for human
progress

Cerro Tostado

Advanced Exploration

Prospect #82



CONTACT DETAILS

Jose Dias Cifuentes
New Metal Business Director
jose.dias.cifuentes@sqm.com
+56 9 7465 7359

Ricardo Gonzalez Montecinos
Metal Business and Exploration Manager
ricardo.gonzalez.montecinos@sqm.com
+56 9 6320 7257

www.sqm.com

