



Solutions  
for human  
progress

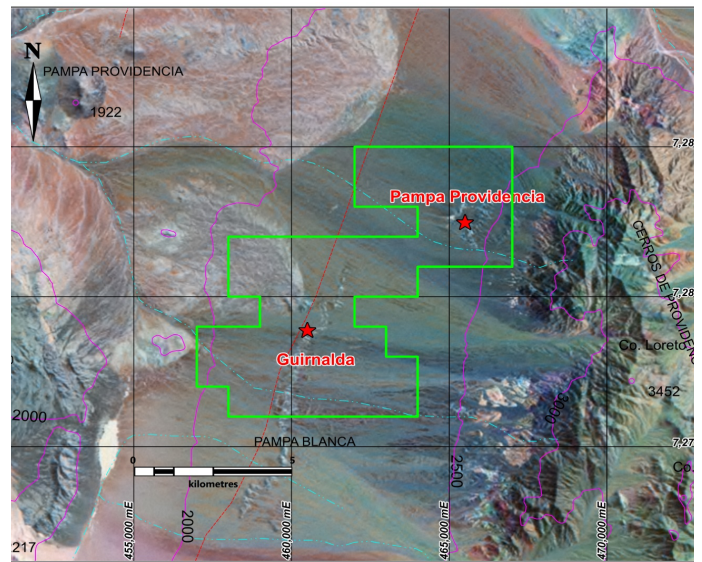
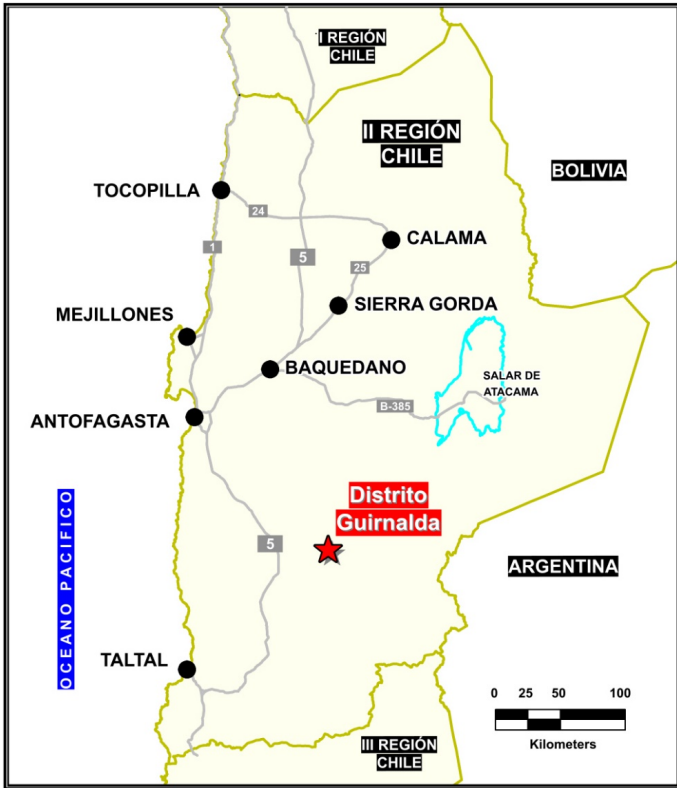
# Distrito Guirnalda

Generative Exploration

Prospect #83

## SUMMARY

Largely covered area south-east of the El Peñon (silver-gold) mine. Evidence of copper oxide mineralization and phyllic alteration exposed for inverse faults



## HIGHLIGHTS

Central Northing (UTM):	7281000
Central Easting (UTM):	463000
Elevation (masl):	1900
Metal(s):	Cu
Deposit Style:	Porphyry
Exploration Stage	Generative Exploration
Area (hectares)	5000
Nearest Project:	El Peñon
Historical:	2 salt crust samples, 3rd party drill

## EXPLORATION WORK

Geological Mapping:	1:10000
Geochemical Samples:	60
Trenching	2 (500 m)
Channel Samples	N/A
Geophysics:	N/A
RC Drill holes	N/A
DDH Drill holes:	N/A
Total drilling :	N/A
Other:	70% covered



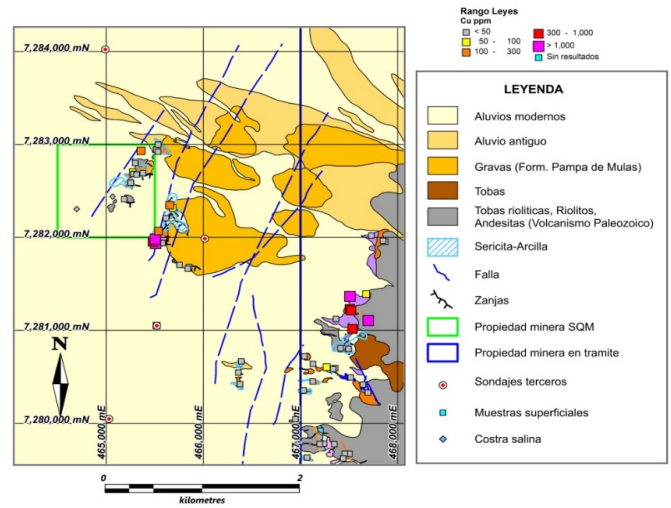
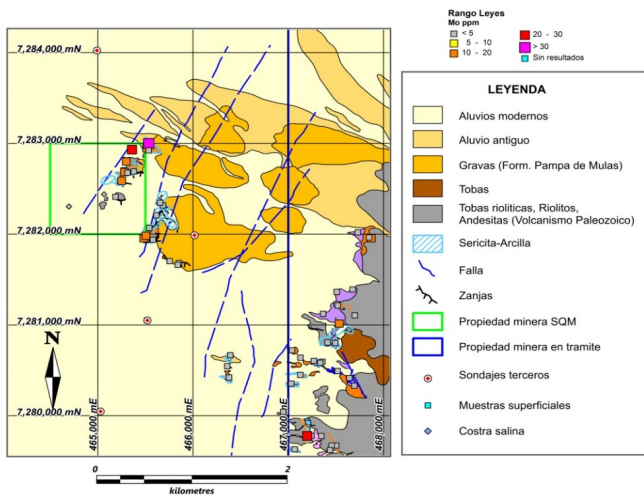
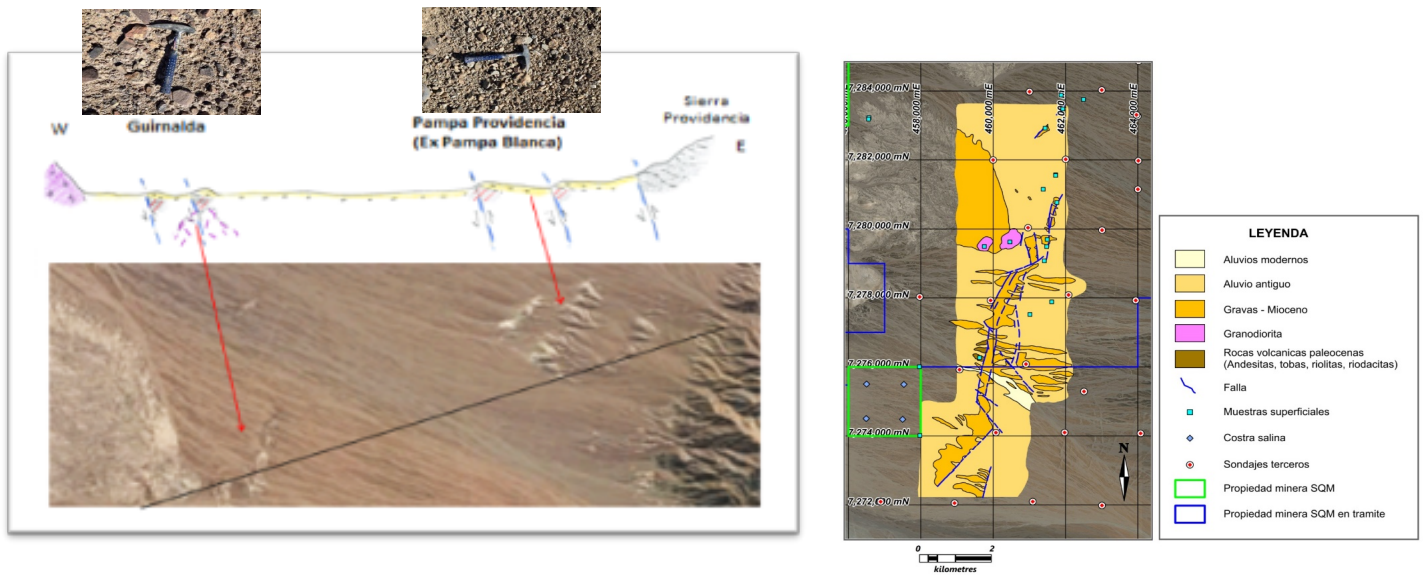


Solutions  
for human  
progress

# Distrito Guirnalda

Generative Exploration

Prospect #83



## CONTACT DETAILS

Jose Dias Cifuentes  
New Metal Business Director  
jose.dias.cifuentes@sqm.com  
+56 9 7465 7359

Ricardo Gonzalez Montecinos  
Metal Business and Exploration Manager  
ricardo.gonzalez.montecinos@sqm.com  
+56 9 6320 7257

[www.sqm.com](http://www.sqm.com)

