



Solutions  
for human  
progress

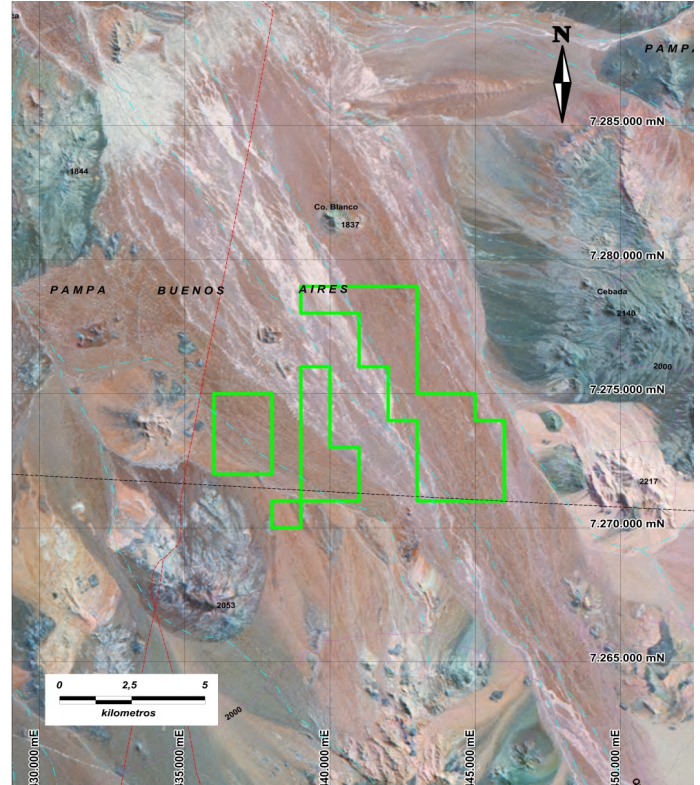
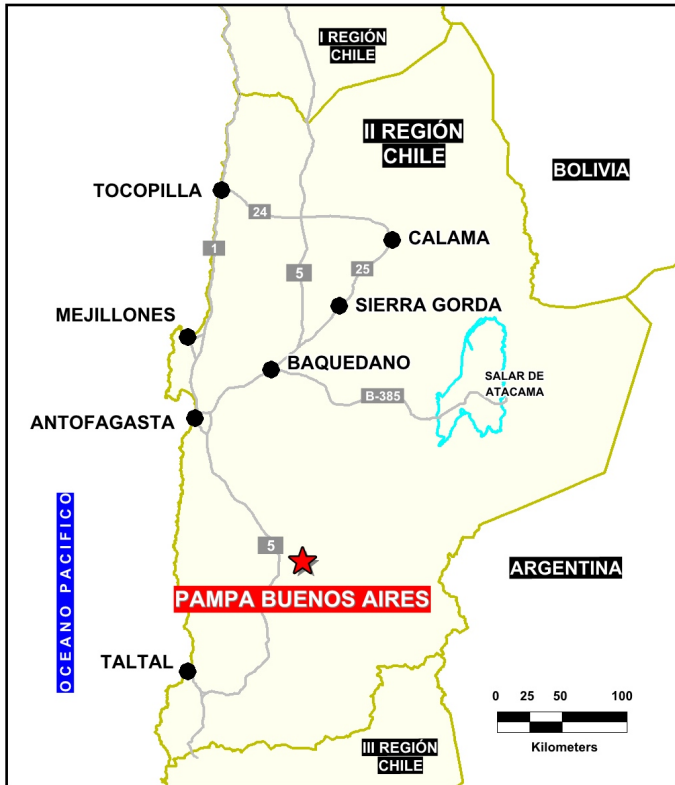
# Pampa Buenos Aires

Generative Exploration

Prospect #84

## SUMMARY

Covered area between the mining operation of El Peñon to the north and El Guanaco to the south. Also south of Cerro Tostado a sector with known Ag-Au vein mineralization.



## HIGHLIGHTS

Central Northing (UTM):	7275000
Central Easting (UTM):	442000
Elevation (masl):	1830
Metal(s):	Au, Ag
Deposit Style:	Epithermal
Exploration Stage	Generative Exploration
Area (hectares)	3510
Nearest Project:	El Peñon
Historical:	24 salt crust samples

## EXPLORATION WORK

Geological Mapping:	1:50000
Geochemical Samples:	N/A
Trenching	N/A
Channel Samples	N/A
Geophysics:	airborne mag
RC Drill holes	N/A
DDH Drill holes:	N/A
Total drilling :	N/A
Other:	100% cover



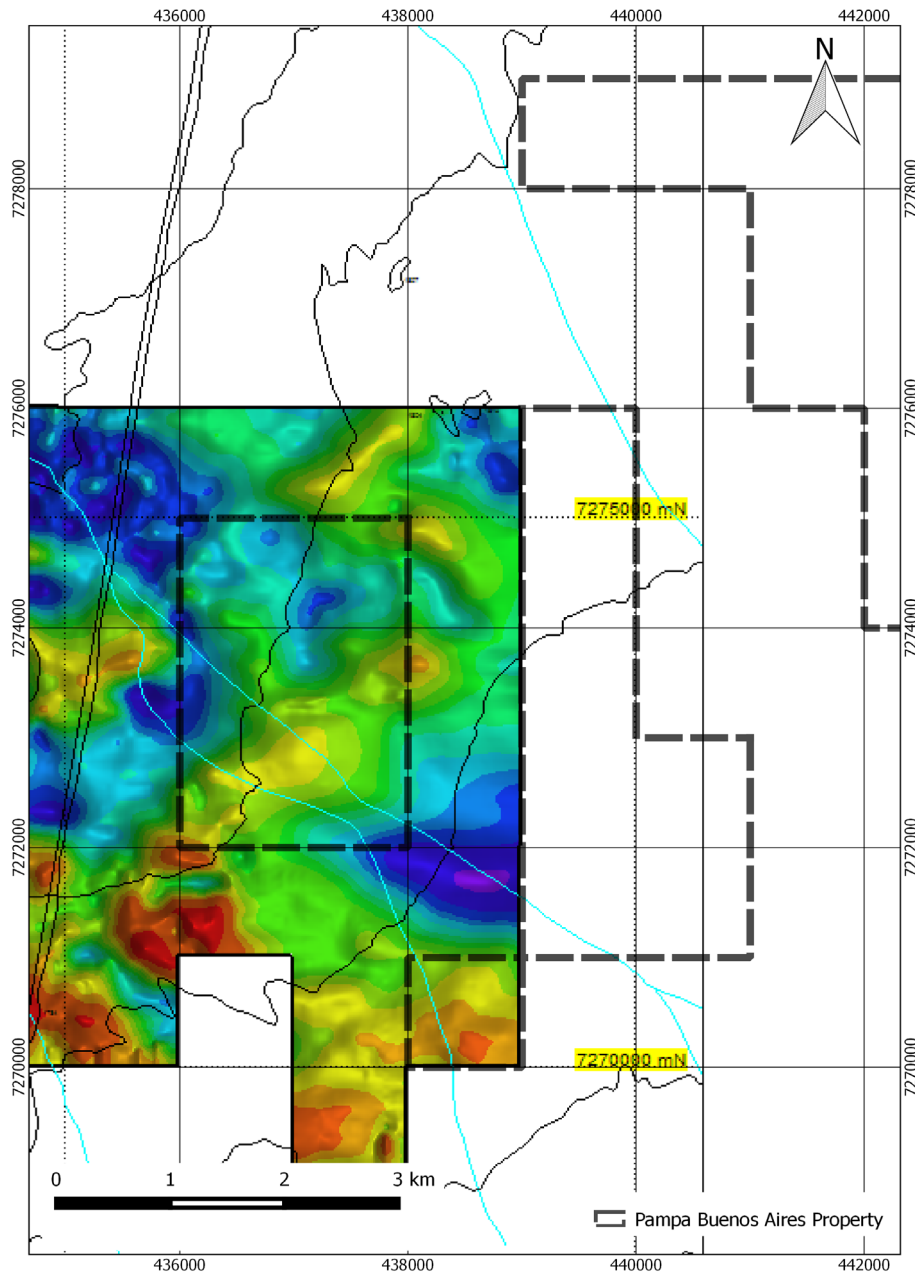


Solutions  
for human  
progress

# Pampa Buenos Aires

Generative Exploration

Prospect #84



## CONTACT DETAILS

**Jose Dias Cifuentes**  
New Metal Business Director  
jose.dias.cifuentes@sqm.com  
+56 9 7465 7359

**Ricardo Gonzalez Montecinos**  
Metal Business and Exploration Manager  
ricardo.gonzalez.montecinos@sqm.com  
+56 9 6320 7257

[www.sqm.com](http://www.sqm.com)

