

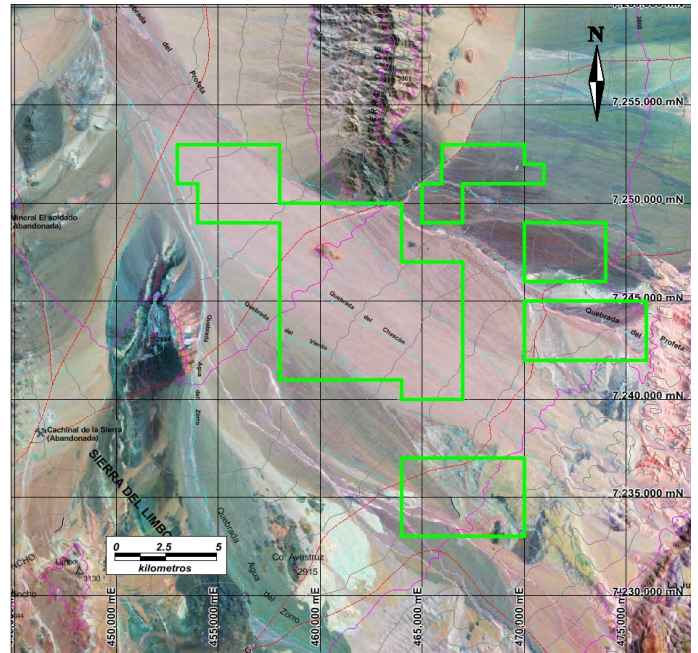
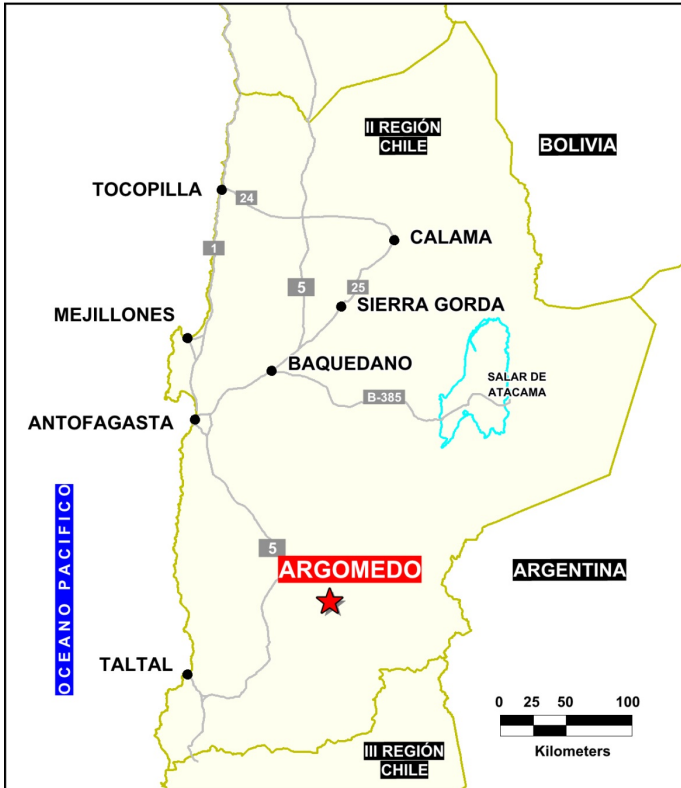


**Solutions
for human
progress**

Argomedo
Generative Exploration
Prospect #87

SUMMARY

95% covered prospect within the Eoceno-Oligoceno copper belt and Domeyko fault system south of the Escondida copper cluster.
Little or no previous work completed in the district.



HIGHLIGHTS

Central Northing (UTM):	7245000
Central Easting (UTM):	467400
Elevation (masl):	2750
Metal(s):	Cu
Deposit Style:	porphyry
Exploration Stage	Generative Exploration
Area (hectares)	16000
Nearest Project:	-
Historical:	3 drillholes made by unknown

EXPLORATION WORK

Geological Mapping:	1:75000
Geochemical Samples:	9
Trenching	N/A
Channel Samples	N/A
Geophysics:	N/A
RC Drill holes	N/A
DDH Drill holes:	N/A
Total drilling :	N/A
Other:	95% cover





Solutions
for human
progress

Argomedo
Generative Exploration
Prospect #87

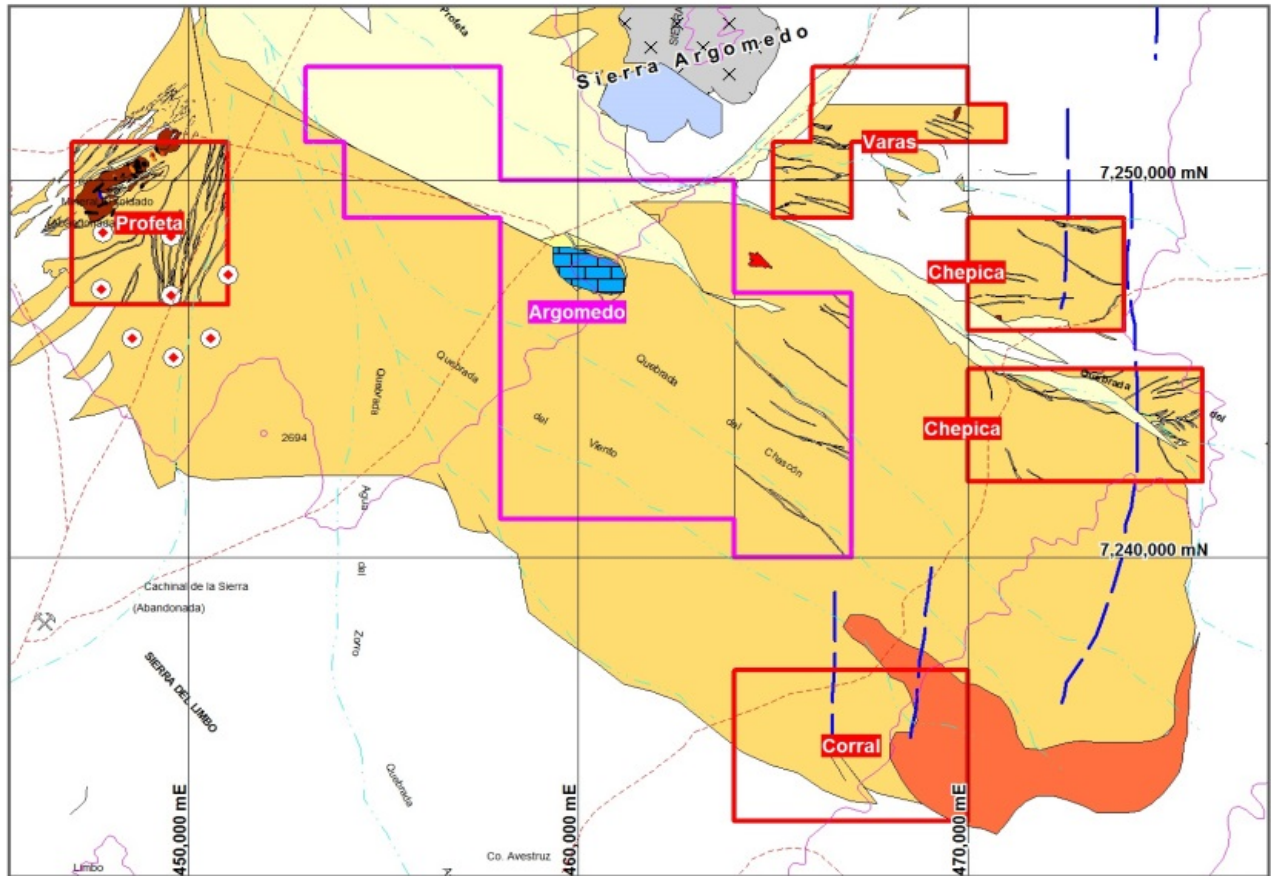
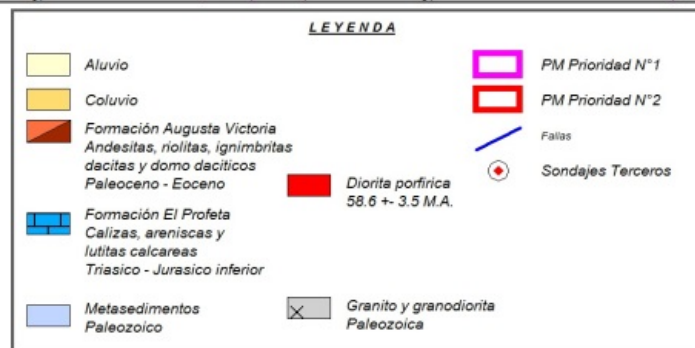


Fig. 2



**CONTACT
DETAILS**

Jose Dias Cifuentes
New Metal Business Director
jose.dias.cifuentes@sqm.com
+56 9 7465 7359

Ricardo Gonzalez Montecinos
Metal Business and Exploration Manager
ricardo.gonzalez.montecinos@sqm.com
+56 9 6320 7257

www.sqm.com

