



Solutions  
for human  
progress

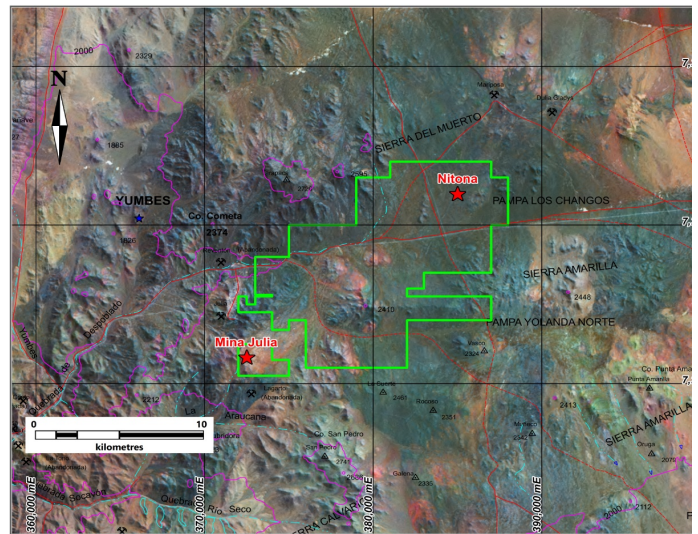
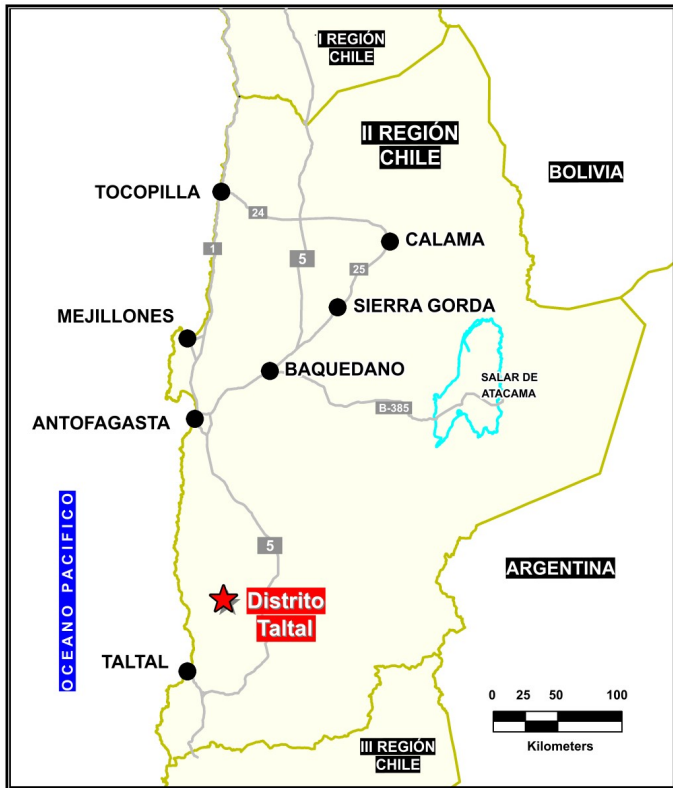
# Distrito Taltal

Advanced Exploration

Prospect #88

## SUMMARY

Nitona: Discovery of mineralized stratabound deposit,  
Julia: Porphyry sistem related to veins and breccias bodies



## HIGHLIGHTS

Central Northing (UTM):	7243000
Central Easting (UTM):	380000
Elevation (masl):	3200
Metal(s):	Cu, Ag
Deposit Style:	Stratabound /IOCG veins
Exploration Stage	Advanced Exploration
Area (hectares)	13000
Nearest Project:	Fiel Rosita
Historical:	40 salt crust drillholes

## EXPLORATION WORK

Geological Mapping:	1:10000
Geochemical Samples:	80
Trenching	89 (23.3km)
Channel Samples	N/A
Geophysics:	ground mag, IP,VTEM
RC Drill holes	37 (6879 m)
DDH Drill holes:	5 (2129 m)
Total drilling :	42 (9008m)
Other:	Inferred Resources 5.2Mt of 0.56% Cu (Nitona)



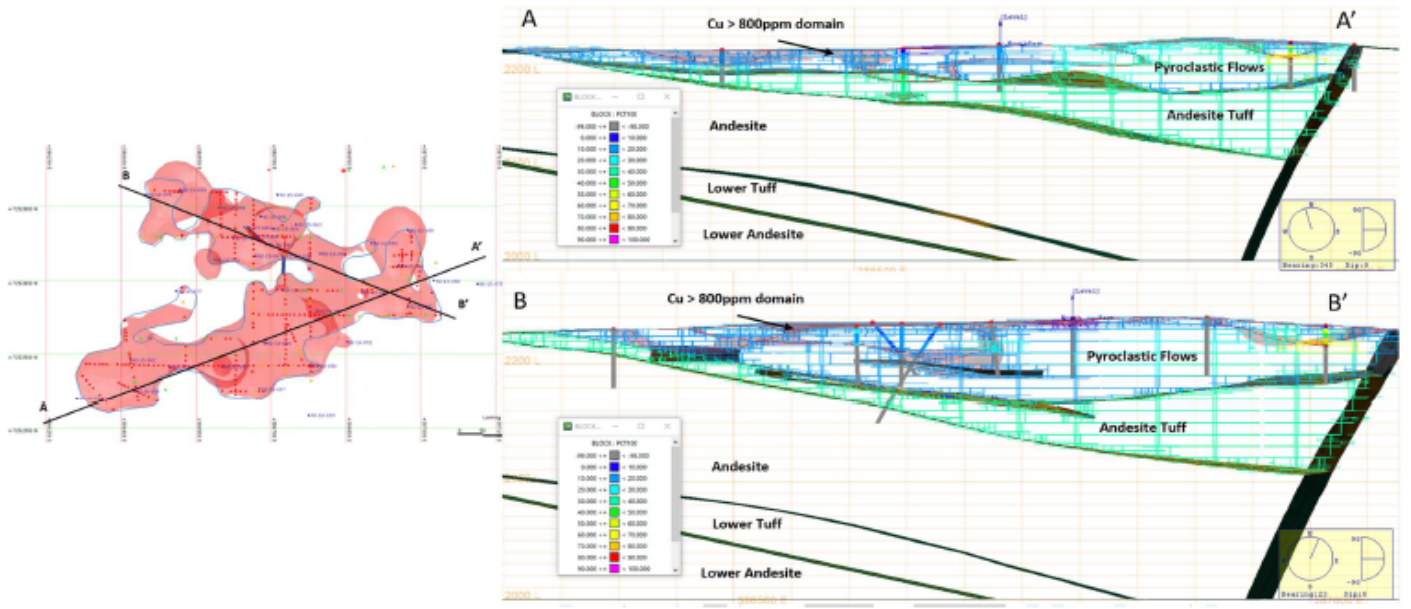


Solutions  
for human  
progress

# Distrito Taltal

Advanced Exploration

Prospect #88

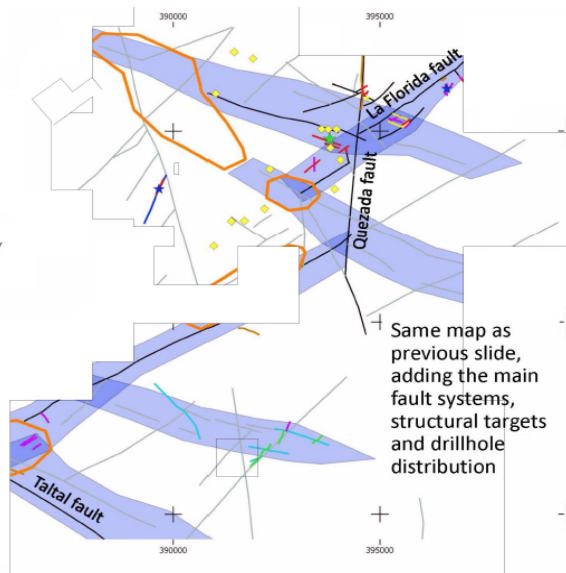


## Results

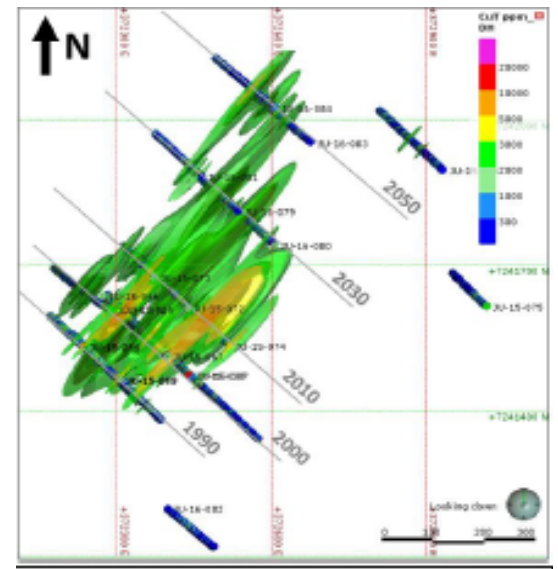
\*This figure was modified by CS  
to honor the SQM property boundary

Legend  

- Drillholes
- Structural\_targets
- Fault\_systems



Same map as  
previous slide,  
adding the main  
fault systems,  
structural targets  
and drillhole  
distribution



## CONTACT DETAILS

Jose Dias Cifuentes  
New Metal Business Director  
jose.dias.cifuentes@sqm.com  
+56 9 7465 7359

Ricardo Gonzalez Montecinos  
Metal Business and Exploration Manager  
ricardo.gonzalez.montecinos@sqm.com  
+56 9 6320 7257

[www.sqm.com](http://www.sqm.com)

