

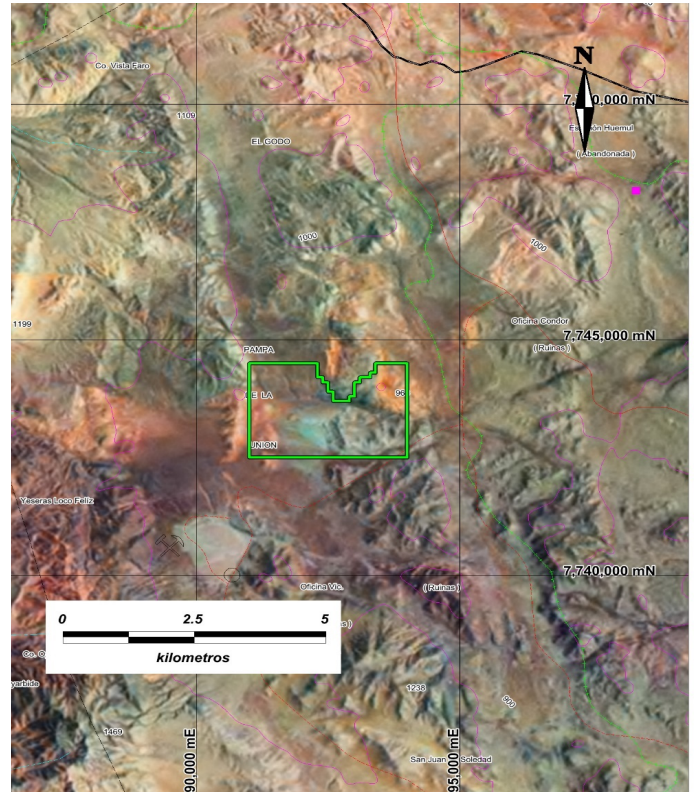
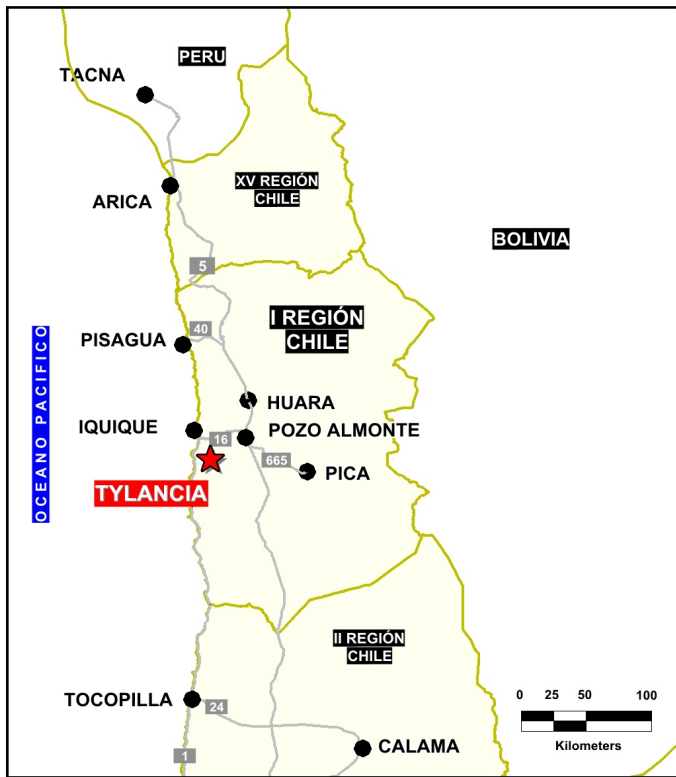


Solutions  
for human  
progress

**Tylancia**  
Generative Exploration  
Prospect #9

## SUMMARY

Potential new district of Cretaceous age porphyry copper deposits; surface mapping confirms copper mineralized siliceous breccia at the edge of gravels.



## HIGHLIGHTS

Central Northing (UTM):	7740000
Central Easting (UTM):	392000
Elevation (masl):	890
Metal(s):	Cu
Deposit Style:	Hydrothermal Breccia
Exploration Stage	Generative Exploration
Area (hectares)	570
Nearest Project:	SCM Costa Rica
Historical:	-

## EXPLORATION WORK

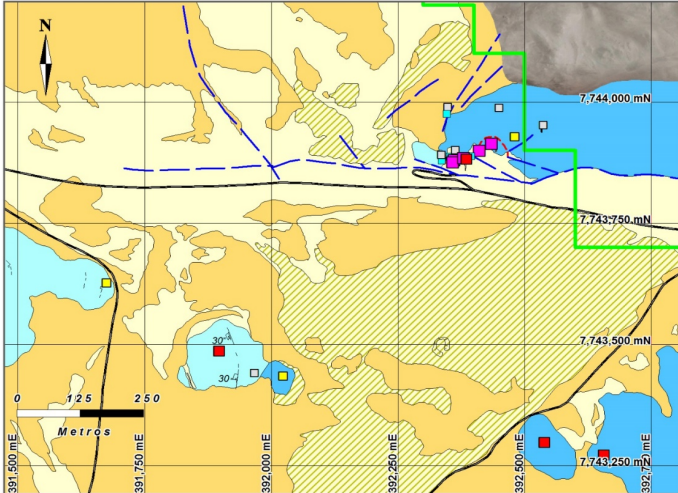
Geological Mapping:	1:2000
Geochemical Samples:	N/A
Trenching	N/A
Channel Samples	N/A
Geophysics:	N/A
RC Drill holes	N/A
DDH Drill holes:	N/A
Total drilling :	N/A
Other:	-



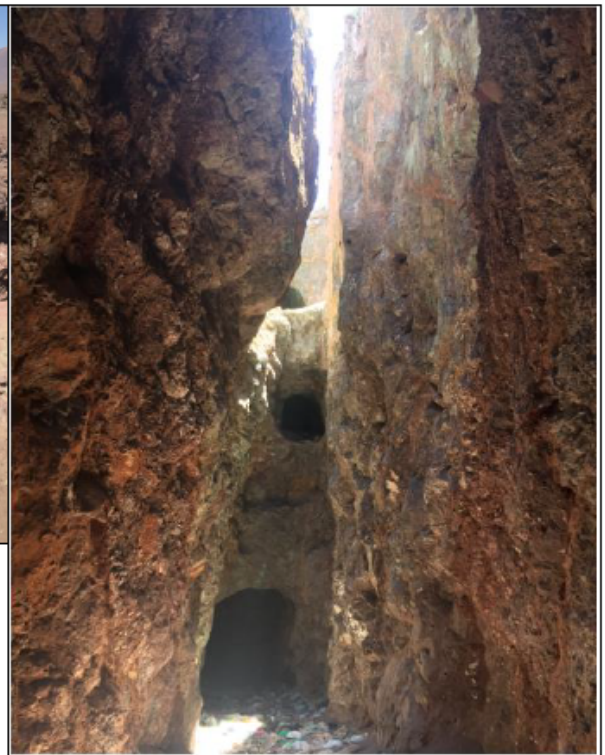


Solutions  
for human  
progress

**Tylancia**  
Generative Exploration  
Prospect #9



Muestras Pulverizadas <150#					
N° muestra	Ag ppm	Cu ppm	Mo ppm	Zn ppm	Fe %
151831	5	18602	<11	249	2.04
151832	<2	536	<11	66	3.01
151833	4	5033	<11	122	2.29
151834	3	9446	<11	340	3.09
151835	<2	671	<11	76	1.09
151836	6	3324	<11	78	1.69
151837	3	1169	<11	42	1.30
151838	<2	12	<11	100	3.90
151839	<2	31	<11	<33	1.88
151840	<2	36	<11	42	2.06
151841	<2	64	<11	189	3.44
151842	<2	32	<11	198	3.48
151843	<2	28	<11	1067	3.28
76311	<2	<11	<11	<33	0.25
76312	<2	58	<11	127	6.60
76313	<2	368	<11	223	9.63
76314	<2	489	<11	256	9.63
76315	<2	78	<11	53	1.25



Muestra	Espesor (m)	Au g/t	Ag ppm	Cu ppm	Pb ppm	Zn ppm
138332	2.5	0.02	1.6	9969	2525	394
138333	1	0.01	3.9	4725	79	227
138334	2	<0.01	5.5	20450	112	136
138335	3	<0.01	11.7	12935	-20	119

-Veta >400m ricas en Cu, espesor >2m  
-Explotación hasta 20m de profundidad

**CONTACT  
DETAILS**

Jose Dias Cifuentes  
New Metal Business Director  
jose.dias.cifuentes@sqm.com  
+56 9 7465 7359

Ricardo Gonzalez Montecinos  
Metal Business and Exploration Manager  
ricardo.gonzalez.montecinos@sqm.com  
+56 9 6320 7257

[www.sqm.com](http://www.sqm.com)

