



Solutions  
for human  
progress

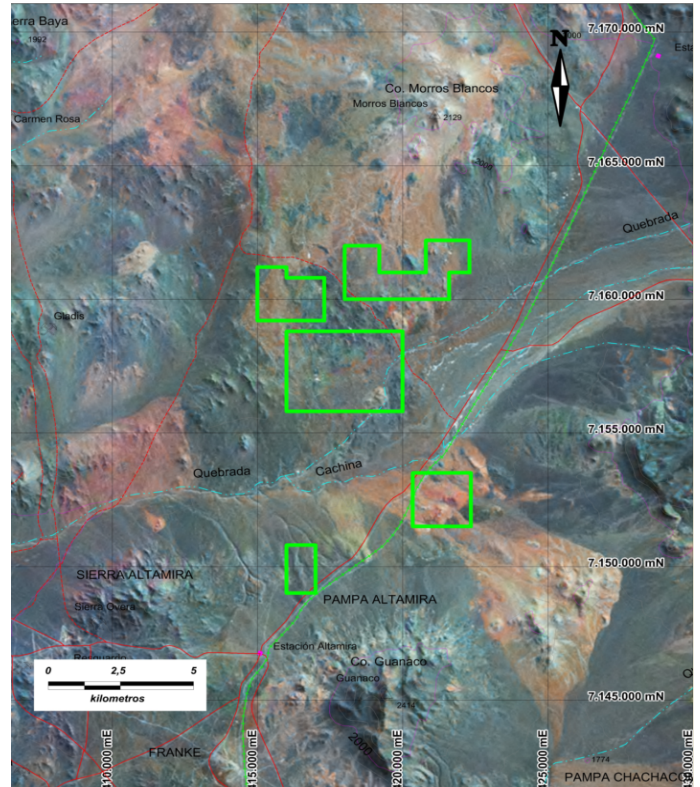
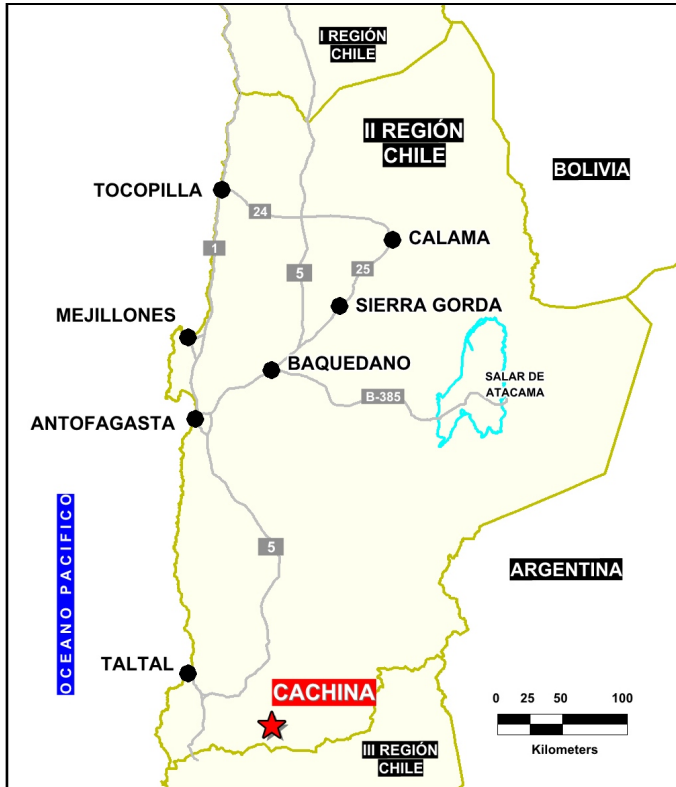
# Altamira - Cachina

Basic Exploration

Prospect #98

## SUMMARY

Anomalous precious metals (silver 2-15 g/t) and indicators (arsenic 0.1%) within a developed IOCG



## HIGHLIGHTS

Central Northing (UTM):	7181000
Central Easting (UTM):	528500
Elevation (masl):	1800
Metal(s):	Cu, Ag, Au
Deposit Style:	IOCG
Exploration Stage	Basic Exploration
Area (hectares)	2854
Nearest Project:	Aguilucho, Altamira, Franke
Historical:	16 salt crust samples

## EXPLORATION WORK

Geological Mapping:	1:25000
Geochemical Samples:	371
Trenching	6
Channel Samples	237
Geophysics:	N/A
RC Drill holes	2 (500 m)
DDH Drill holes:	N/A
Total drilling :	2 (500 m)
Other:	60% cover



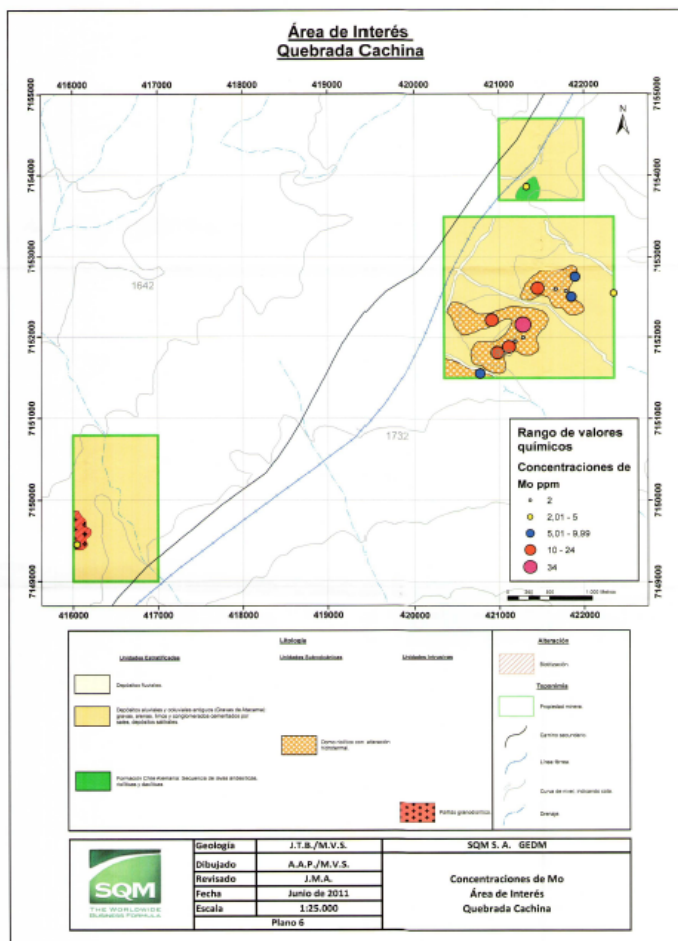
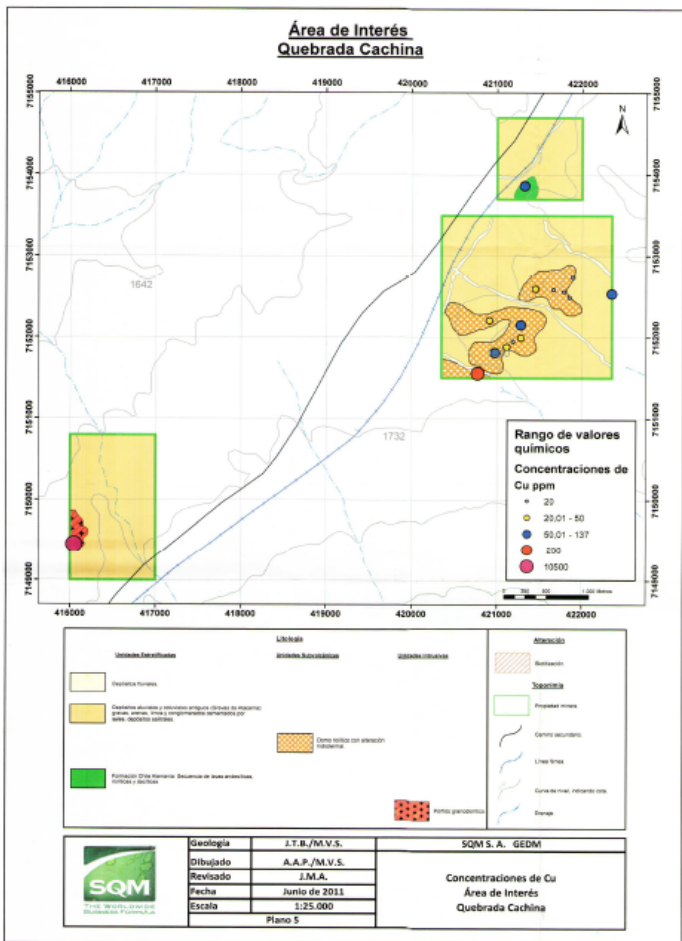


Solutions  
for human  
progress

# Altamira - Cachina

Basic Exploration

Prospect #98



## CONTACT DETAILS

Jose Dias Cifuentes  
New Metal Business Director  
jose.dias.cifuentes@sqm.com  
+56 9 7465 7359

Ricardo Gonzalez Montecinos  
Metal Business and Exploration Manager  
ricardo.gonzalez.montecinos@sqm.com  
+56 9 6320 7257

[www.sqm.com](http://www.sqm.com)

