

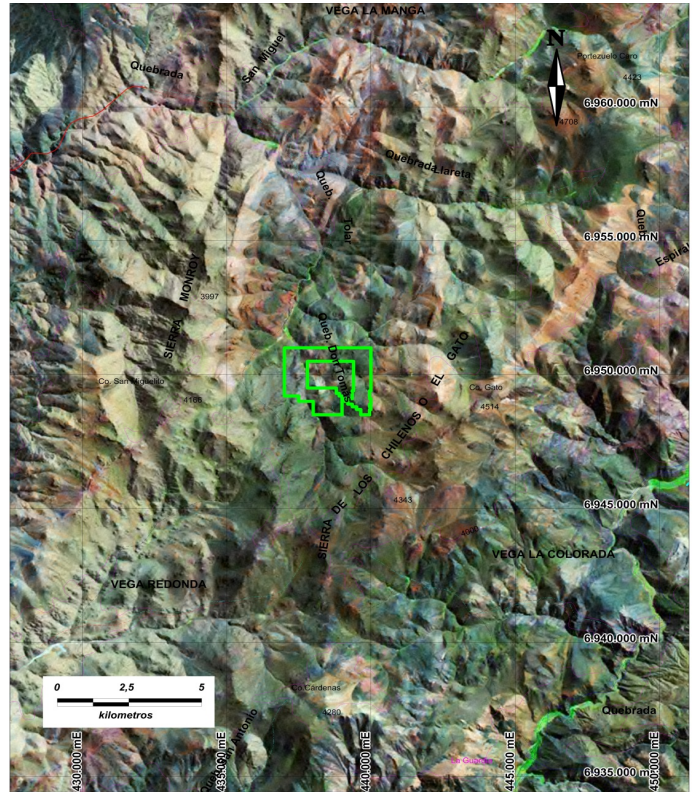
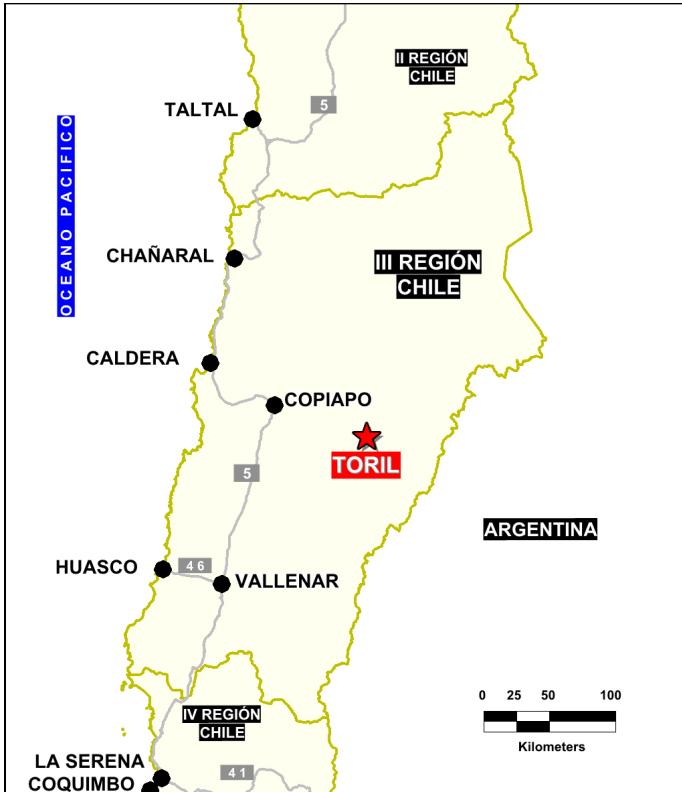


Solutions  
for human  
progress

**Toril**  
Generative Exploration  
Prospect #99

## SUMMARY

Initial prospect samples returned values to over 1% Cu associated with anomalous Ag and As in rock.



## HIGHLIGHTS

Central Northing (UTM):	6949500
Central Easting (UTM):	438300
Elevation (masl):	3500
Metal(s):	Cu, Au
Deposit Style:	Porphyry
Exploration Stage	Generative Exploration
Area (hectares)	483
Nearest Project:	Refugio
Historical:	small miners work

## EXPLORATION WORK

Geological Mapping:	1:50000
Geochemical Samples:	13
Trenching	N/A
Channel Samples	N/A
Geophysics:	N/A
RC Drill holes	N/A
DDH Drill holes:	N/A
Total drilling :	N/A
Other:	40% cover

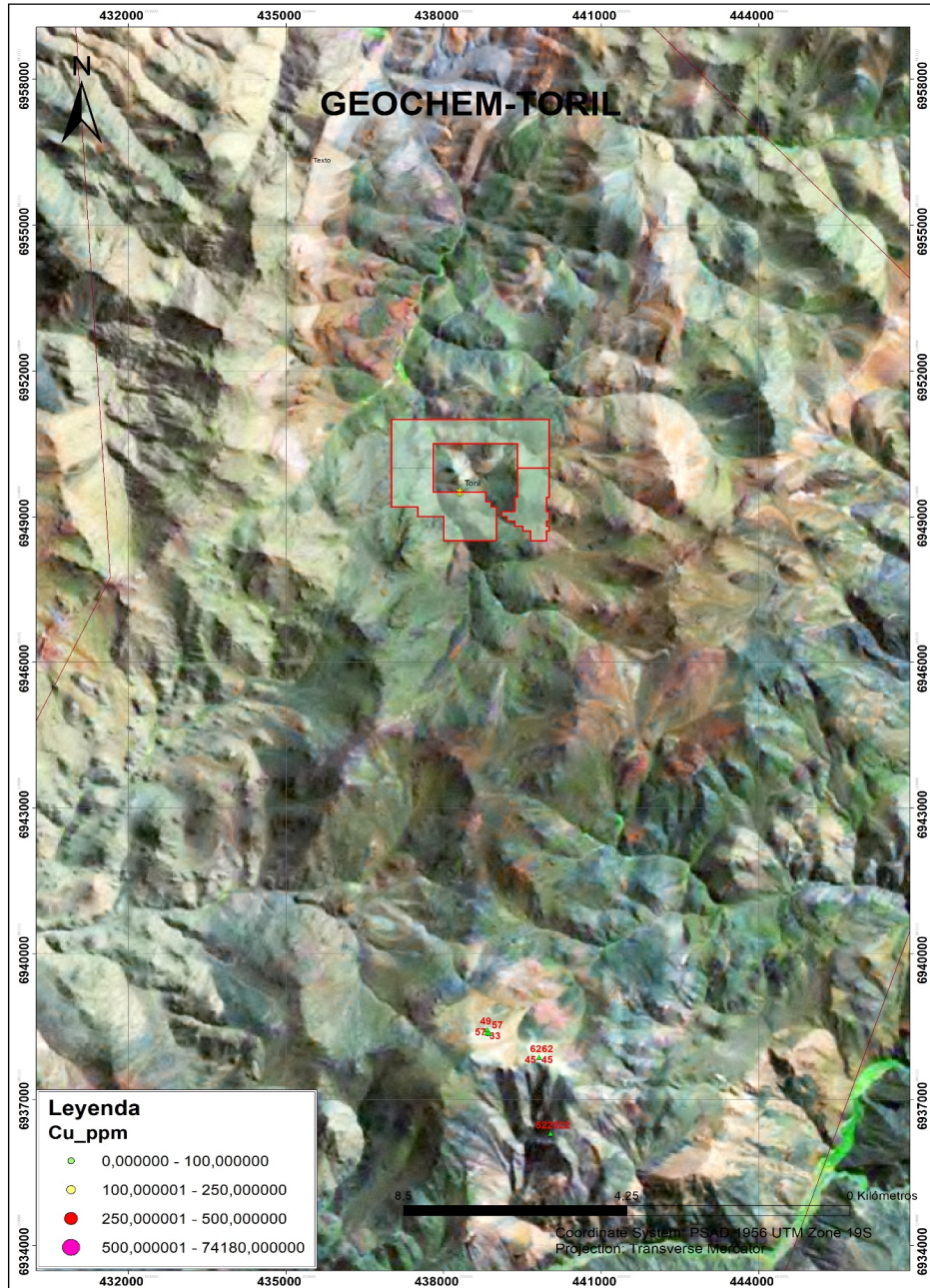






Solutions  
for human  
progress

**Toril**  
Generative Exploration  
Prospect #99



## CONTACT DETAILS

**Jose Dias Cifuentes**  
New Metal Business Director  
jose.dias.cifuentes@sqm.com  
+56 9 7465 7359

**Ricardo Gonzalez Montecinos**  
Metal Business and Exploration Manager  
ricardo.gonzalez.montecinos@sqm.com  
+56 9 6320 7257

[www.sqm.com](http://www.sqm.com)

