

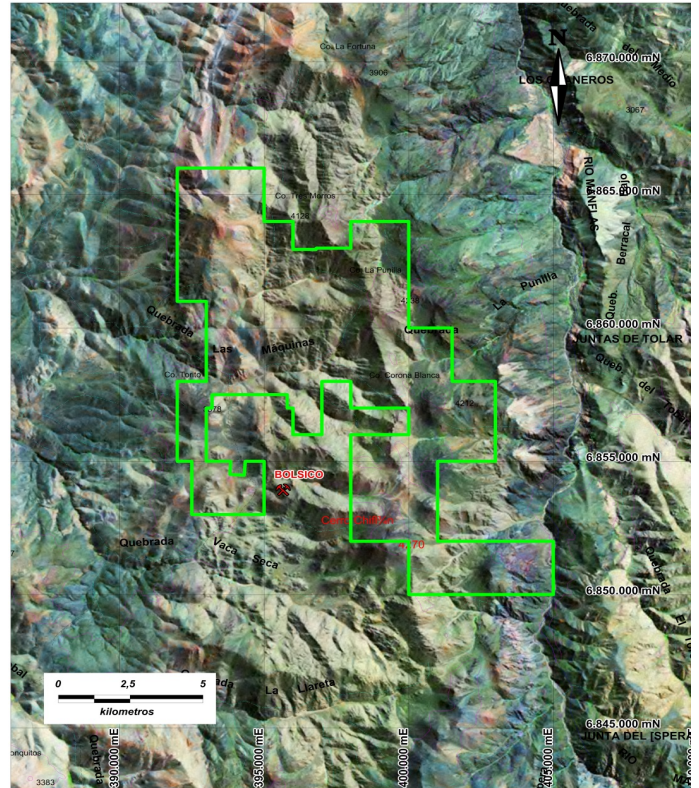
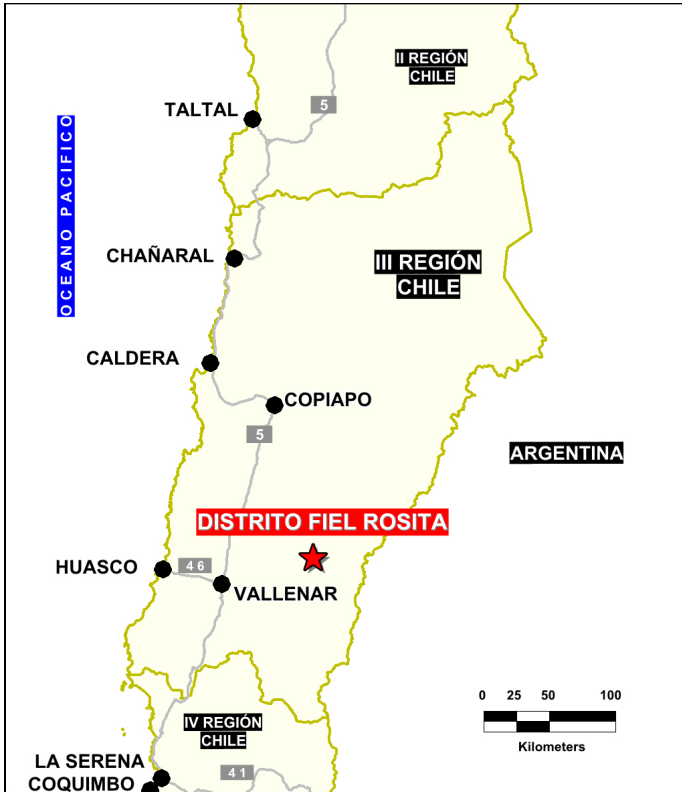


**Solutions  
for human  
progress**

**Fiel Rosita**  
Advanced Exploration  
Prospect #100

## SUMMARY

Discovery of mineralized Cu-Mo-Au breccias and porphyries with adjacent skarn; district geological modeling underway, initial resource estimate completed. Indications of increasing grade at depth.



## HIGHLIGHTS

Central Northing (UTM):	6860000
Central Easting (UTM):	396000
Elevation (masl):	3200
Metal(s):	Cu, Au
Deposit Style:	Porphyry
Exploration Stage	Advanced Exploration
Area (hectares)	5405
Nearest Project:	Fiel Rosita
Historical:	-

## EXPLORATION WORK

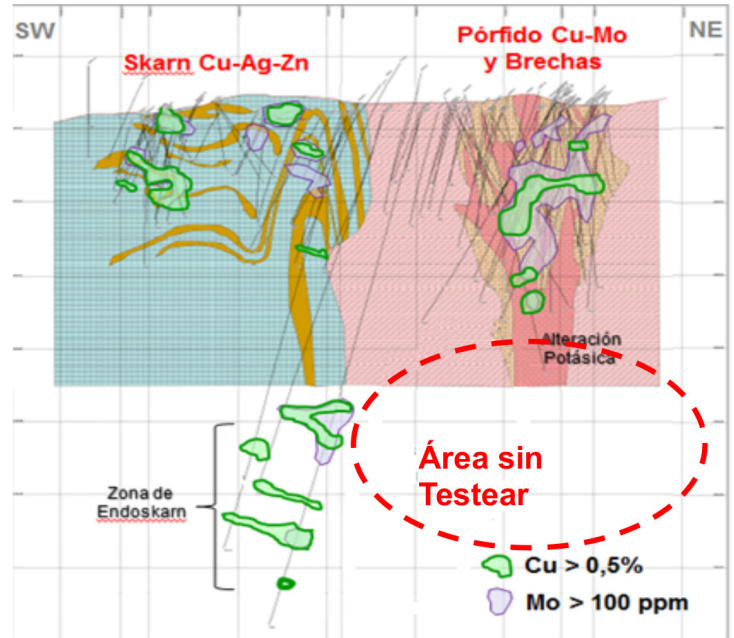
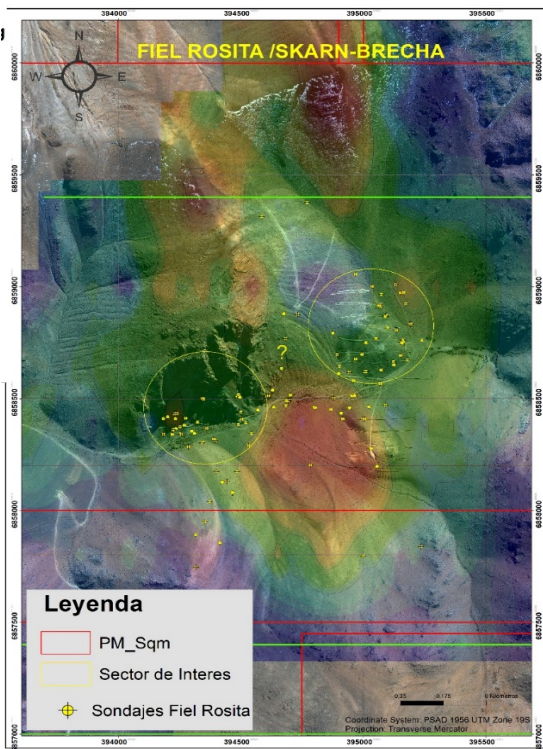
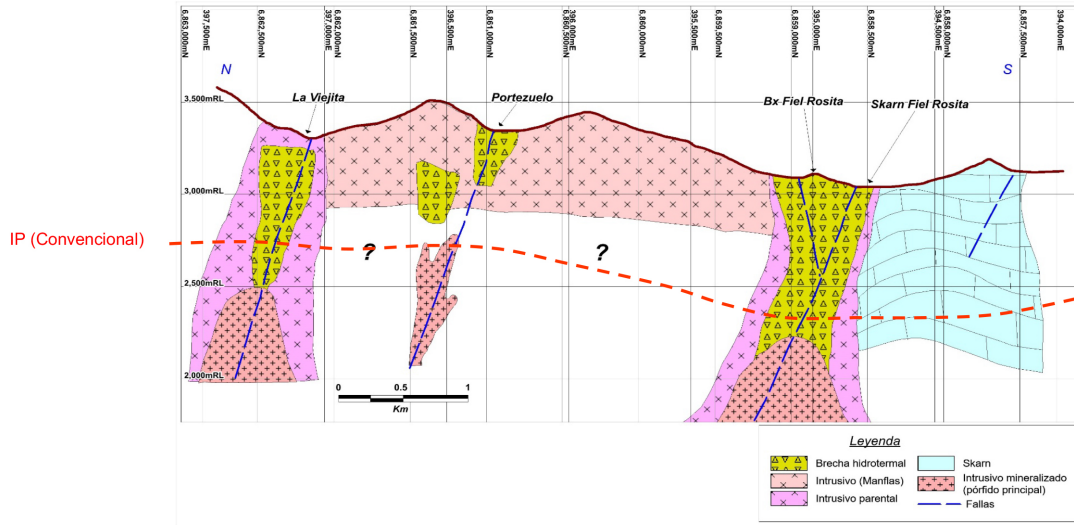
Geological Mapping:	1:20000
Geochemical Samples:	497
Trenching	16 (4.5 km)
Channel Samples	N/A
Geophysics:	ground mag, IP
RC Drill holes	148 (36824 m)
DDH Drill holes:	58 (25838 m)
Total drilling :	206 (62662 m)
Other:	petrography, 60% cover





Solutions  
for human  
progress

**Fiel Rosita**  
Advanced Exploration  
Prospect #100



**CONTACT  
DETAILS**

Jose Dias Cifuentes  
New Metal Business Director  
jose.dias.cifuentes@sqm.com  
+56 9 7465 7359

Ricardo Gonzalez Montecinos  
Metal Business and Exploration Manager  
ricardo.gonzalez.montecinos@sqm.com  
+56 9 6320 7257

[www.sqm.com](http://www.sqm.com)

